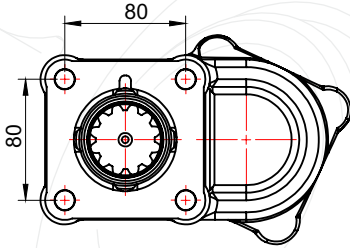
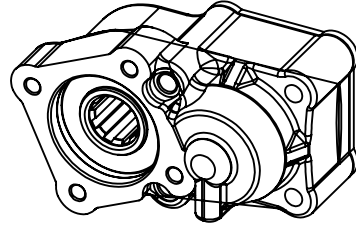
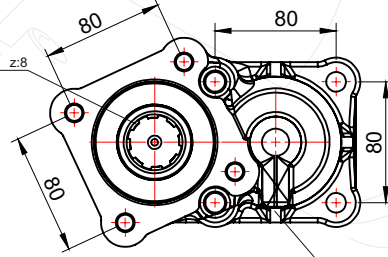
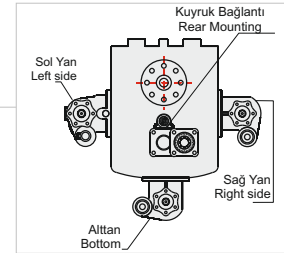
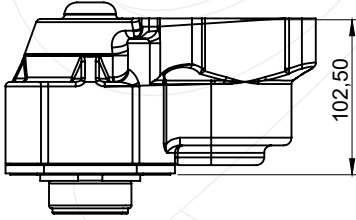


ZF5 / REAR HELIX DOUBLE GEAR

50241321P0



DIN 5462 - 8x32x35 z:8

AIR INLET R 1/4"
HAVA GİRİŞİ R 1/4"

GENEL BİLGİLER/GENERAL DATA

P.T.O. KODU / P.T.O. CODE	50241321P0	
Tork / Torque		
Güç(1000 rpm) / Power		
Devir / Speed		
Oran / Ratio		
Ağırlık / Weight		
Bağlantı / Mounting	Kuyruk	Rear
Kumanda / Control	Havali	Pneumatic
Dönüş / P.T.O. Rotation	Sol - ISO	Left - ISO

Ana Şanzıman / Gearbox	Kullanılan Bazı Araçlar / Used Vehicles
ZF16S251-221-151-150-130- ZF S5/AK/65-120-111-110-92- GP ZF S5/AK/6S-90-80-70-66- 65-55-50-42-36-35-ZF-ECOMIT 9S75-9S109-16S109 ZF NEW ECOSPLIT 16S1620TD- 16S1820TO-18S1820TO- 16S2220TD-16S220TO- 16S2520TO- 16S2023TDL	MAN / MERCEDES / BMC PROFESYONEL / FORD CARGO / CHRYSLER HINO / DODGE / FARGO / IVECO /DAF/ DAEWOO / RENAULT

Seçtiğiniz pompanın dönüş yönü, P.T.O. dönüş yönü ile ters olmalıdır.
The rotation of the chosen pump has to be opposite with the rotation of P.T.O.

P.T.O. montaj edildikten sonra ana şanzıman yağını tamamlayın.
Fill the oil of the gear box after mounting the P.T.O.

POWER TAKE OFF

P.T.O.