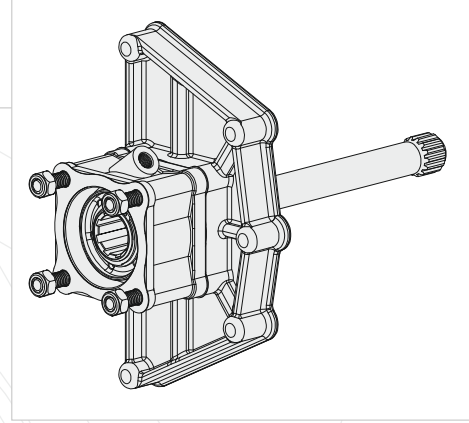
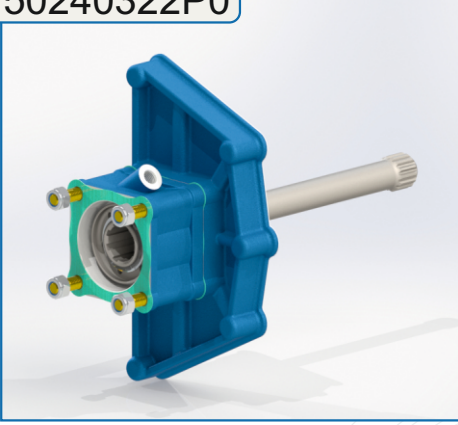
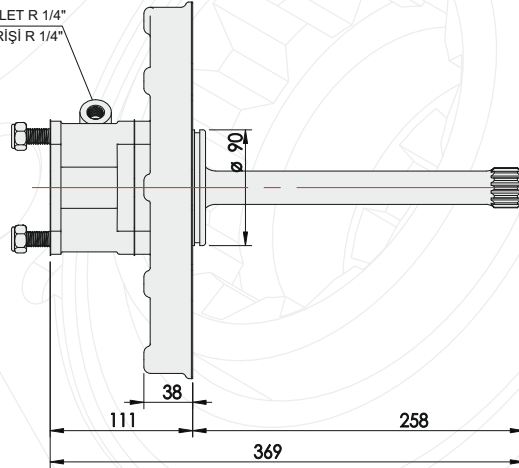


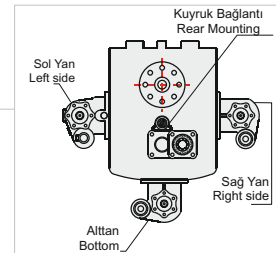
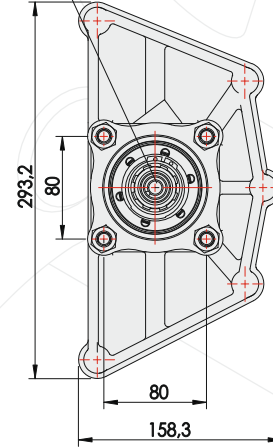
50240322P0



AIR INLET R 1/4"  
HAVA GİRİŞİ R 1/4"



DIN 5462 8x32x35



## GENEL BİLGİLER/GENERAL DATA

P.T.O. KODU / P.T.O. CODE	50240322P0	
Tork / Torque	Kgm	310 Nm
Güç(1000 rpm) / Power	Hp	31 kW
Devir / Speed	rpm	1000 rpm
Oran / Ratio	1/1,2	1/1,2
Ağırlık / Weight	. kg	. lb
Bağlantı / Mounting	Kuyruk	Rear
Kumanda / Control	Havalı	Pneumatic
Dönüş / P.T.O. Rotation	Sağ - ISO	Right - ISO

Ana Şanzıman / Gearbox	Kullanılan Bazı Araçlar / Used Vehicles
12TX-1410 /1610 /1810 /2010 /2210 /2420 /2620 /2820 TD/16.69-1.0 12TX-1610 /1810/2010 /2210 /2410 /2610 /2820 /3020 /3220 /3420 TO/12.92-0.77 16TX-1640 /1840 /2040/2240 /2440 /2640 /2840 TD/17.94-1.0 16TX-1840 /2040 /2240 /2440 /2640 /2840 /3040/3240 /3440 TO/14.68-0.82	FORD 1848

Seçeğinizin pompanın dönüş yönü, P.T.O. dönüş yönü ile ters olmalıdır.  
The rotation of the chosen pump has to be opposite with the rotation of P.T.O.

P.T.O. montaj edildikten sonra ana şanzıman yağını tamamlayın.  
Fill the oil of the gear box after mounting the P.T.O.