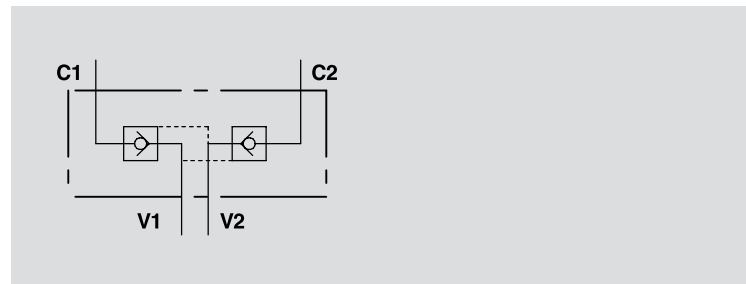


VALVOLE DI BLOCCO PILOTATE A DOPPIO EFFETTO TIPO A

DOUBLE PILOT OPERATED CHECK VALVES - TYPE A

TIPO / TYPE
VBPDE A

SCHEMA IDRAULICO
HYDRAULIC DIAGRAM



IMPIEGO:

Valvola utilizzata per bloccare in posizione un cilindro in entrambi i sensi, consentendo il flusso in una direzione ed impedendolo in senso contrario fino a quando non viene applicata la pressione di pilotaggio.

MATERIALI E CARATTERISTICHE:

Corpo: acciaio zincato.
Componenti interni: acciaio temprato termicamente e rettificato.
Guarnizioni: BUNA N standard.
Tenuta: a cono guidato. Trafilamento trascurabile.

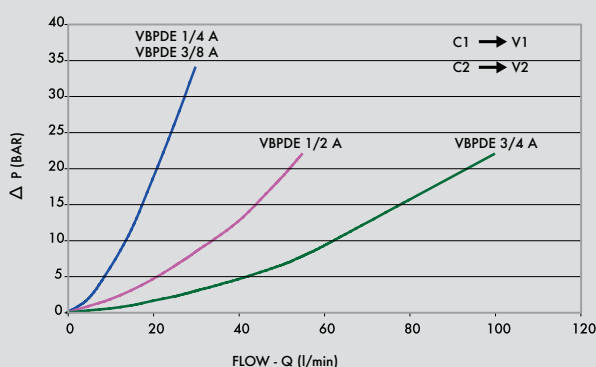
MONTAGGIO:

Collegare V1 e V2 all'alimentazione e C1 e C2 all'attuatore.

A RICHIESTA

- senza guarnizione OR sul pilota
- Molla 1 Bar
- Molla 8 Bar

PERDITE DI CARICO PRESSURE DROP CURVE



USE AND OPERATION:

Pilot check valves are used to block the cylinder in both directions. Flow is free in one direction and blocked in the reverse direction until pilot pressure is applied.

MATERIALS AND FEATURES:

Body: zinc-plated steel.
Internal parts: hardened and ground steel.
Seals: BUNA N standard.
Leakage: Guided poppet - negligible leakage.

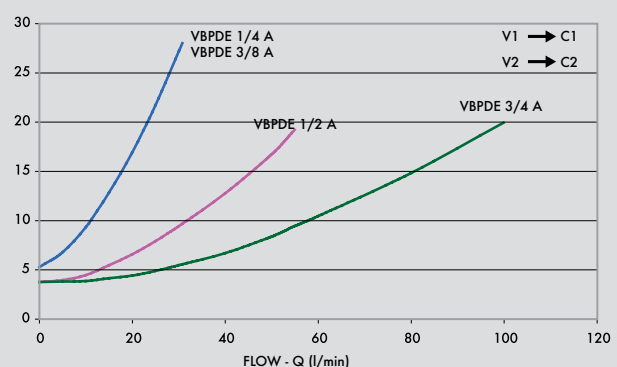
CONNECTIONS:

Connect V1 and V2 to the supply and C1 and C2 to the actuator.

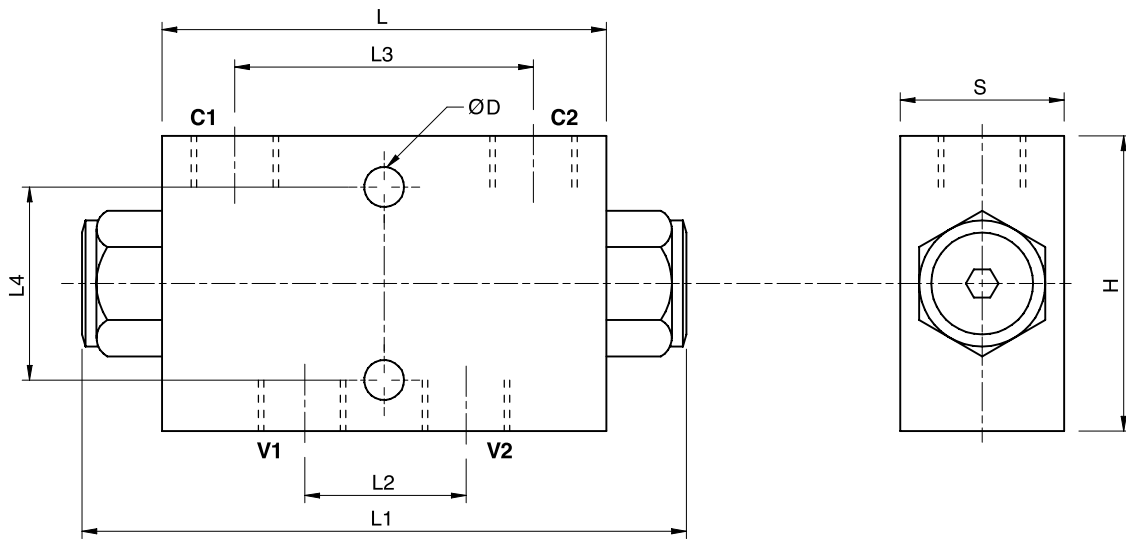
ON REQUEST

- without seal on pilot piston
- 1 Bar spring
- 8 Bar spring

Temperatura olio: 50°C - Viscosità olio: 30 cSt
Oil temperature: 50° C - Oil viscosity: 30 cSt



| CODICE CODE | SIGLA TYPE | RAPP. PILOT PILOT RATIO | PORTATA MAX MAX FLOW Lt. / min | PRESSIONE MAX MAX PRESSURE Bar | PRESSIONE APERTURA CRACKING PRESSURE Bar |
|----------------|---------------|----------------------------|--------------------------------------|--------------------------------------|------------------------------------------------|
| V0178 | VBPDE 1/4" A | 1:5,5 | 20 | 350 | 4,5 |
| V0180 | VBPDE 3/8" A | 1:5,5 | 30 | 350 | 4,5 |
| V0190 | VBPDE 1/2" A | 1:4,5 | 55 | 350 | 5,5 |
| V0191 | VBPDE 3/4" A | 1:3,7 | 100 | 350 | 3 |



| CODICE CODE | SIGLA TYPE | V1 - V2 C1 - C2 | L mm | L1 mm | L2 mm | L3 mm | L4 mm | H mm | S mm | D mm | PESO WEIGHT kg |
|----------------|---------------|--------------------|---------|----------|----------|----------|----------|---------|---------|---------|----------------------|
| | | GAS | | | | | | | | | |
| V0178 | VBPDE 1/4" A | G 1/4" | 80 | 113 | 27 | 52 | 44 | 60 | 30 | 8,5 | 1,032 |
| V0180 | VBPDE 3/8" A | G 3/8" | 80 | 113 | 30 | 52 | 44 | 60 | 30 | 8,5 | 0,994 |
| V0190 | VBPDE 1/2" A | G 1/2" | 115 | 147 | 39 | 80 | 40 | 80 | 35 | 8,5 | 2,324 |
| V0191 | VBPDE 3/4" A | G 3/4" | 158 | 198 | 50 | 105 | 58 | 80 | 50 | 10,5 | 4,800 |