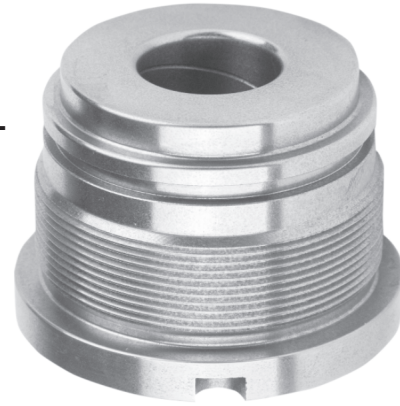
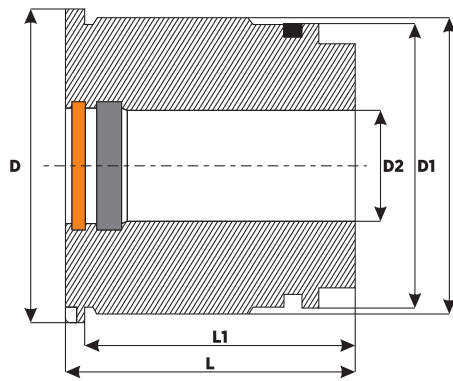


- DUST SEAL
- NUTRING
- O-RING



GG-25/GG-26 QUALITY HYDRAULIC CYLINDER CASTING THROAT (ROD WIPER)

Product Code	NUTRING	DUST SEAL	O-RING	D	D1	D2	L	L1	THREAD
CNC-B 32X16	-	16x24x5/7	28x2,5	40	33	16	40	32	36x1,5
CNC-B 32X18	18x25x5	18x26x5/7	28x2,5	40	33	16	40	32	36x1,5
CNC-B 32x20	18x25x5	18x26x5/7	28x2,5	40	33	20	40	32	36x1,5
CNC-B 32x22	20x28x5	20x28x5/7	28x2,5	40	33	22	40	32	36x1,5
CNC-B 35x20	20x30x6	20x28x5/7	31x3	45	36	20	40	32	39x1,5
CNC-B 35x22	22x30x6	22x30x5/7	31x3	45	36	22	40	32	39x1,5
CNC-B 35x25	25x35x6	25x33x5/7	31x3	45	36	25	40	32	39x1,5
CNC-B 40x16	-	16x24x5/7	36x3	50	41	16	40	32	45x1,5
CNC-B 40x20	20x28x5	20x28x5/7	36x3	50	41	20	40	32	45x1,5
CNC-B 40x22	22x30x6	22x30x5/7	36x3	50	41	22	40	32	45x1,5
CNC-B 40x25	25x35x6	25x33x5/7	36x3	50	41	25	40	32	45x1,5
CNC-B 40x28	28x38x6	28x36x5/7	36x3	50	41	28	40	32	45x1,5
CNC-B 45x20	20x28x5	20x28x5/7	39,69x3,53	55	46	20	45	37	50x1,5
CNC-B 45x25	25x35x6	25x33x5/7	39,69x3,53	55	46	25	45	37	50x1,5
CNC-B 45x28	28x38x6	28x36x5/7	39,69x3,53	55	46	28	45	37	50x1,5
CNC-B 45x30	30x40x8	30x38x5/7	39,69x3,53	55	46	30	45	37	50x1,5
CNC-B 50x20	20x28x5	20x28x5/7	44,45x3,53	60	51	20	45	37	55x1,5
CNC-B 50x22	22x30x6	22x30x5/7	44,45x3,53	60	51	22	45	37	55x1,5
CNC-B 50x25	25x35x6	25x33x5/7	44,45x3,53	60	51	25	45	37	55x1,5
CNC-B 50x28	28x38x6	28x36x5/7	44,45x3,53	60	51	28	45	37	55x1,5
CNC-B 50x30	30x40x8	30x38x5/7	44,45x3,53	60	51	30	45	37	55x1,5
CNC-B 50x32	32x42x8	32x40x5/7	44,45x3,53	60	51	32	45	37	55x1,5
CNC-B 50x35	35x45x8	35x43x5/7	44,45x3,53	60	51	35	45	37	55x1,5
CNC-B 50x36	36x46x8	36x44x5/7	44,45x3,53	60	51	36	45	37	55x1,5
CNC-B 55x25	25x35x6	25x33x5/7	47,63x3,53	65	56	25	52	42	60x1,5
CNC-B 55x30	30x40x8	30x38x5/7	47,63x3,53	65	56	30	52	42	60x1,5
CNC-B 55x35	35x45x8	35x43x5/7	47,63x3,53	65	56	35	52	42	60x1,5
CNC-B 60x25	25x35x6	25x33x5/7	53,57x3,53	70	61	25	52	42	65x1,5
CNC-B 60x30	30x40x8	30x38x5/7	53,57x3,53	70	61	30	52	42	65x1,5
CNC-B 60x35	35x45x8	35x43x5/7	53,57x3,53	70	61	35	52	42	65x1,5
CNC-B 60x40	40x50x10	40x48x5/7	53,57x3,53	70	61	40	52	42	65x1,5
CNC-B 60x45	45x55x10	45x55x5/7	53,57x3,53	70	31	45	52	42	65x1,5
CNC-B 63x30	30x38x8	30x38x5/7	57,15x3,53	75	64	30	52	42	69x1,5
CNC-B 63x35	35x45x8	35x43x5/7	57,15x3,53	75	64	35	52	42	69x1,5
CNC-B 63x36	36x46x8	36x44x5/7	57,15x3,53	75	64	36	52	42	69x1,5
CNC-B 63x40	40x50x10	40x58x5/7	57,15x3,53	75	64	40	52	42	69x1,5
CNC-B 63x45	45x55x10	45x55x5/7	57,15x3,53	75	64	45	52	42	69x1,5
CNC-B 63x50	-	50x60x5/7	57,15x3,53	75	64	50	52	42	69x1,5
CNC-B 65x30	30x40x8	30x43x5/7	59,92x3,53	80	66	30	63	52	70x1,5
CNC-B 65x35	35x45x8	35x43x5/7	59,92x3,53	80	66	35	63	52	70x1,5
CNC-B 65x40	40x50x10	40x48x5/7	59,92x3,53	80	66	40	63	52	70x1,5
CNC-B 65x45	45x55x10	45x55x5/7	59,92x3,53	80	66	45	63	52	70x1,5
CNC-B 70x25	25x35x6	25x33x5/7	65,10x3,53	85	71	25	63	52	75x2
CNC-B 70x30	30x40x8	30x38x5/7	65,10x3,53	85	71	30	63	52	75x2
CNC-B 70x35	35x45x8	35x43x5/7	65,10x3,53	85	71	35	63	52	75x2
CNC-B 70x40	40x50x10	40x48x5/7	65,10x3,53	85	71	40	63	52	75x2



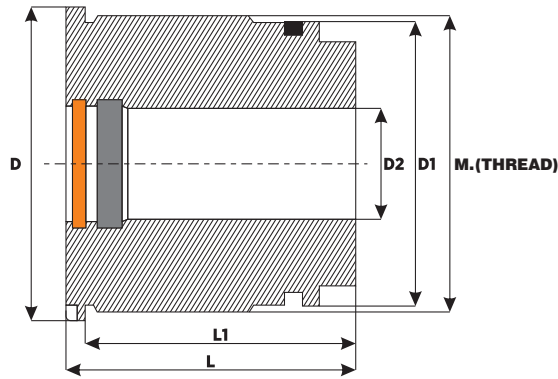
M.(THREAD)

- DUST SEAL
- NUTRING
- O-RING

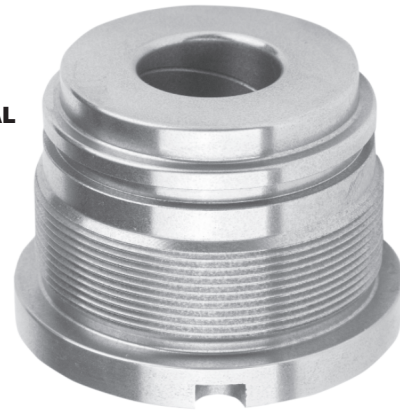


GG-25/GG-26 QUALITY HYDRAULIC CYLINDER CASTING THROAT (ROD WIPER)

Product Code	NUTRING	DUST SEAL	O-RING	D	D1	D2	L	L1	THREAD
CNC-B 70x45	45x55x10	45x55x5/7	65,10x3,53	85	71	45	63	52	75x2
CNC-B 70x50	50x60x10	50x60x5/7	65,10x3,53	85	71	50	63	52	75x2
CNC-B 70x55	55x65x10	55x65x5/7	65,10x3,53	85	71	55	63	52	75x2
CNC-B 75x30	30x40x8	30x38x5/7	69,85x3,53	90	76	30	63	52	80x2
CNC-B 75x35	35x45x8	35x43x5/7	69,85x3,53	90	76	35	63	52	80x2
CNC-B 75x40	40x50x10	40x48x5/7	69,85x3,53	90	76	40	63	52	80x2
CNC-B 75x45	45x55x10	45x55x5/7	69,85x3,53	90	76	45	63	52	80x2
CNC-B 75x50	50x60x10	50x60x5/7	69,85x3,53	90	76	50	63	52	80x2
CNC-B 75x55	55x65x10	55x65x5/7	69,85x3,53	90	76	55	63	52	80x2
CNC-B 80x30	30x40x8	30x38x5/7	74x4	95	81	30	63	52	85x2
CNC-B 80x35	35x45x8	35x43x5/7	74x4	95	81	35	63	52	85x2
CNC-B 80x40	40x50x10	40x48x5/7	74x4	95	81	40	63	52	85x2
CNC-B 80x45	45x55x10	45x55x5/7	74x4	95	81	45	63	52	85x2
CNC-B 80x50	50x60x10	50x60x5/7	74x4	95	81	50	63	52	85x2
CNC-B 80x55	55x65x10	55x65x5/7	74x4	95	81	55	63	52	85x2
CNC-B 80x56	56x66x10	56x66x5/7	74x2	95	81	56	63	52	85x2
CNC-B 80x60	60x70x10	60x70x5/7	74x2	95	81	60	63	52	85x2
CNC-B 85x35	35x45x8	35x43x5/7	79x4	100	86	35	63	52	90x2
CNC-B 85x40	40x50x10	40x48x5/7	79x4	100	86	40	63	52	90x2
CNC-B 85x45	45x55x10	45x55x5/7	79x4	100	86	45	63	52	90x2
CNC-B 85x50	50x60x10	50x60x5/7	79x4	100	86	50	63	52	90x2
CNC-B 85x55	55x65x10	55x65x5/7	79x4	100	86	55	63	52	90x2
CNC-B 85x60	60x70x10	60x70x5/7	79x4	100	86	60	63	52	90x2
CNC-B 90x35	35x45x8	35x43x5/7	84x4	105	91	35	63	52	95x2
CNC-B 90x40	40x50x10	40x48x5/7	84x4	105	91	40	63	52	95x2
CNC-B 90x45	45x55x10	45x55x5/7	84x4	105	91	45	63	52	95x2
CNC-B 90x50	50x60x10	50x60x5/7	84x4	105	91	50	63	52	95x2
CNC-B 90x55	55x65x10	55x65x5/7	84x4	105	91	55	63	52	95x2
CNC-B 90x60	60x70x10	60x70x5/7	84x4	105	91	60	63	52	95x2
CNC-B 90x65	65x75x10	65x75x5/7	84x4	105	91	65	63	52	95x2
CNC-B 100x40	40x50x10	40x48x5/7	90x5	115	101	40	82	70	105x2
CNC-B 100x45	45x55x10	45x55x5/7	90x5	115	101	45	82	70	105x2
CNC-B 100x50	50x60x10	50x60x5/7	90x5	115	101	50	82	70	105x2
CNC-B 100x55	55x65x10	55x65x5/7	90x5	115	101	55	82	70	105x2
CNC-B 100x56	56x66x10	56x66x5/7	90x5	115	101	56	82	70	105x2
CNC-B 100x60	60x70x10	60x70x5/7	90x5	115	101	60	82	70	105x2
CNC-B 100x65	65x75x10	65x75x5/7	90x5	115	101	65	82	70	105x2
CNC-B 100x70	70x80x12	70x80x5/7	90x5	115	101	70	82	70	105x2
CNC-B 100x75	75x85x12	75x84x12/7	90x5	115	101	75	82	70	105x2
CNC-B 100x80	80x90x12	80x92x12/7	90x5	115	101	80	82	70	105x2
CNC-B 110x50	50x60x10	50x60x5/7	100x5	130	111	50	82	70	115x2
CNC-B 110x55	55x65x10	55x65x5/7	100x5	130	111	55	82	70	115x2
CNC-B 110x56	56x66x10	56x66x5/7	100x5	130	111	56	82	70	115x2
CNC-B 110x60	60x70x10	60x70x5/7	100x5	130	111	60	82	70	115x2
CNC-B 110x65	65x75x10	65x75x5/7	100x5	130	111	65	82	70	115x2
CNC-B 110x70	70x80x12	70x80x5/7	100x5	130	111	70	82	70	115x2

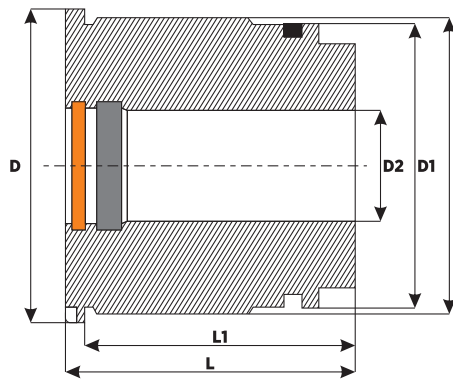


- DUST SEAL
- NUTRING
- O-RING



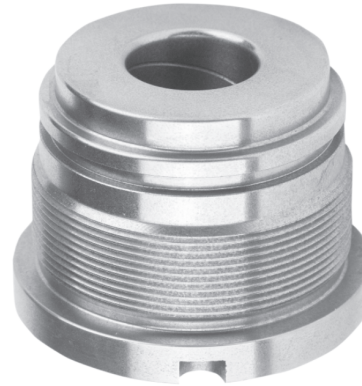
GG-25/GG-26 QUALITY HYDRAULIC CYLINDER CASTING THROAT (ROD WIPER)

Product Code	NUTRING	DUST SEAL	O-RING	D	D1	D2	L	L1	THREAD		
CNC-B 110x75	75x85x12	75x84x12/7	100x5	130	111	70	82	70	115x2		
CNC-B 110x80	80x90x12	80x92x12/7	100x5	130	111	80	82	70	115x2		
CNC-B 115x50	50x60x10	50x60x5/7	105x5	130	116	50	82	70	120x2		
CNC-B 115x55	55x65x10	55x65x5/7	105x5	130	116	55	82	70	120x2		
CNC-B 115x60	60x70x10	60x70x5/7	105x5	130	116	60	82	70	120x2		
CNC-B 115x65	65x75x10	65x75x5/7	105x5	130	116	65	82	70	120x2		
CNC-B 115x70	70x80x12	70x80x5/7	105x5	130	116	70	82	70	120x2		
CNC-B 115x75	75x85x12	75x84x7x7/12	105x2	130	116	75	82	70	120x2		
CNC-B 115x80	80x90x12	80x92x7/12	105x5	130	116	80	82	70	120x2		
CNC-B 120x45	45x55x10	45x55x5/7	110x5	140	121	45	82	70	125x2		
CNC-B 120x50	50x60x10	50x60x5/7	110x5	140	121	50	82	70	125x2		
CNC-B 120x55	55x65x10	55x65x5/7	110x5	140	121	55	82	70	125x2		
CNC-B 120x60	60x70x10	60x70x5/7	110x5	140	121	60	82	70	125x2		
CNC-B 120x65	65x75x10	65x75x5/7	110x5	140	121	65	82	70	125x2		
CNC-B 120x70	70x85x10	70x80x5/7	110x5	140	121	70	82	70	125x2		
CNC-B 120x75	75x85x12	75x87x7/12	110x5	140	121	75	82	70	125x2		
CNC-B 120x80	80x90x12	80x92x7/12	110x5	140	121	80	82	70	125x2		
CNC-B 120x85	85x95x12	85x97x7/12	110x5	140	121	85	82	70	125x2		
CNC-B 120x90	90x100x12	90x102x7/12	110x5	140	121	90	82	70	125x2		
CNC-B 125x50	50x60x10	50x60x5/7	115x5	145	126	50	82	70	130x2		
CNC-B 125x55	55x65x10	55x65x5/7	115x5	145	126	55	82	70	130x2		
CNC-B 125x60	60x70x10	60x70x5/7	115x5	145	126	60	82	70	130x2		
CNC-B 125x65	65x75x10	65x75x5/7	115x5	145	126	65	82	70	130x2		
CNC-B 125x70	70x85x10	70x80x5/7	115x5	145	126	70	82	70	130x2		
CNC-B 125x75	75x85x12	75x87x7/12	115x5	145	126	75	82	70	130x2		
CNC-B 125x80	80x90x12	80x92x7/12	115x5	145	126	80	82	70	130x2		
CNC-B 125x85	85x95x12	85x97x7/12	115x5	145	126	85	82	70	130x2		
CNC-B 125x90	90x100x12	90x102x7/12	115x5	145	126	85	82	70	130x2		
CNC-B 130x60	60x70x10	60x70x5/7	120x6	150	131	60	102	90	135x2		
CNC-B 130x70	70x85x12	70x80x5/7	120x6	150	131	70	102	90	135x2		
CNC-B 130x80	80x90x12	80x92x7/12	120x6	150	131	80	102	90	135x2		
CNC-B 130-90	90x100x12	90x102x7/12	120x6	150	131	90	102	90	135x2		
CNC-B 130x100	100x115x12	100x112x7/12	120x6	150	131	100	102	90	135x2		
CNC-B 140x60	60x70x10	60x70x5/7	130x6	160	141	60	102	90	145x2		
CNC-B 140x65	65x75x10	65x75x5/7	130x6	160	141	65	102	90	145x2		
CNC-B 140x70	70x80x12	70x80x5/7	130x6	160	141	70	102	90	145x2		
CNC-B 140x75	75x85x12	75x87x7/12	130x6	160	141	75	102	90	145x2		
CNC-B 140x80	80x90x12	80x92x7/12	130x6	160	141	80	102	90	145x2		
CNC-B 140x85	85x95x12	85x97x7/12	130x6	160	141	85	102	90	145x2		
CNC-B 140x90	90x100x12	90x102x7/12	130x6	160	141	90	102	90	145x2		
CNC-B 140x100	100x115x12	100x112x7/12	130x6	160	141	100	102	90	145x2		
CNC-B 150x60	60x70x10	60x70x5/7	140x6	170	151	60	102	90	155x2		
CNC-B 150x70	70x80x12	70x80x5/7	140x6	170	151	70	102	90	155x2		
CNC-B 150x80	80x90x12	80x92x7/12	140x6	170	151	80	102	90	155x2		
CNC-B 150x90	90x100x12	90x102x7/12	140x6	170	151	90	102	90	155x2		
CNC-B 150x100	100x115x12	100x112x7/12	140x6	170	151	100	102	90	155x2		



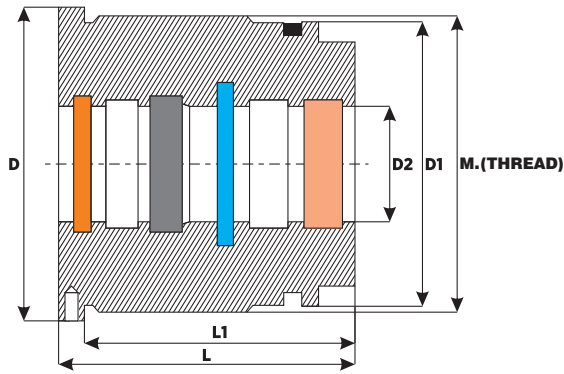
M.(THREAD)

- DUST SEAL
- NUTRING
- O-RING



GG-25/GG-26 QUALITY HYDRAULIC CYLINDER CASTING THROAT (ROD WIPER)

Product Code	NUTRING	DUST SEAL	O-RING	D	D1	D2	L	L1	THREAD		
CNC-B 150x110	110x125x12	110x122x7/12	140x6	170	151	110	102	90	155x2		
CNC-B 160x60	60x70x10	60x70x5/7	150x6	180	161	60	102	90	165x2		
CNC-B 160x70	70x80x12	70x80x5/7	150x6	180	161	70	102	90	165x2		
CNC-B 160x80	80x90x12	80x92x7/12	150x6	180	161	80	102	90	165x2		
CNC-B 160x90	90x100x12	90x102x7/12	150x6	180	161	90	102	90	165x2		
CNC-B 160x100	100x115x12	100x112x7/12	150x6	180	161	100	102	90	165x2		
CNC-B 160x110	110x125x12	110x122x7/12	150x6	180	161	110	102	90	165x2		
CNC-B 160x120	120x135x15	120x132x7/12	150x6	180	161	120	102	90	165x2		
CNC-B 170x90	90x100x12	90x102x7/12	160x6	190	171	90	102	90	175x2		
CNC-B 170x100	100x115x12	100x112x7/12	160x6	190	171	100	102	90	175x2		
CNC-B 170x110	110x125x12	110x122x7/12	160x6	190	171	110	102	90	175x2		
CNC-B 170x120	120x135x15	120x132x7/12	160x6	190	171	120	102	90	175x2		
CNC-B 180x80	80x90x12	80x92x7/12	170x6	200	181	80	102	90	185x2		
CNC-B 180x90	90x100x12	90x102x7/12	170x6	200	181	90	102	90	185x2		
CNC-B 180x100	100x115x12	100x112x7/12	170x6	200	181	100	102	90	185x2		
CNC-B 180x110	110x125x12	110x122x7/12	170x6	200	181	110	102	90	185x2		
CNC-B 180x120	120x135x15	120x132x7/12	170x6	200	181	120	102	90	185x2		
CNC-B 180x130	130x150x15	130x142x7/12	170x6	200	181	130	102	90	185x2		
CNC-B 180x140	140x160x15	140x152x7/12	170x6	200	181	140	102	90	185x2		
CNC-B 200x90	90x100x12	90x102x7/12	190x6	220	201	90	102	90	205x2		
CNC-B 200x100	100x115x12	100x112x7/12	190x6	220	201	100	102	90	205x2		
CNC-B 200x110	110x125x12	110x122x7/12	190x6	220	201	110	102	90	205x2		
CNC-B 200x120	120x135x15	120x132x7/12	190x6	220	201	120	102	90	205x2		
CNC-B 200x130	130x150x15	130x142x7/12	190x6	220	201	130	102	90	205x2		
CNC-B 200x140	140x160x15	140x152x7/12	190x6	220	201	140	102	90	205x2		
CNC-B 220x100	100x115x12	100x112x7/12	210x6	250	221	100	102	90	225x2		
CNC-B 220x110	110x125x12	110x122x7/12	210x6	250	221	110	102	90	225x2		
CNC-B 220x120	120x135x15	120x132x7/12	210x6	250	221	120	102	90	225x2		
CNC-B 220x130	130x150x15	130x142x7/12	210x6	250	221	130	102	90	225x2		
CNC-B 220x140	140x160x15	140x152x7/12	210x6	250	221	140	102	90	225x2		

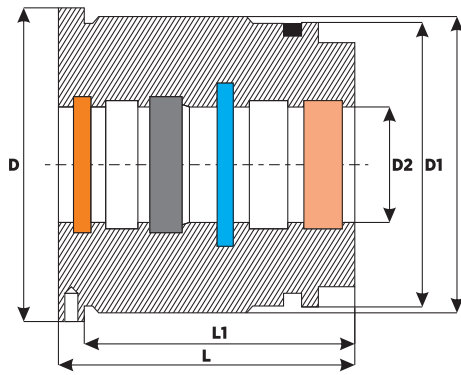


- DUST SEAL**
- NUTRING**
- O-RING**
- INITIAL PRESURE RING**
- GUIDE RING**



1040/1050 (QUALITY) STEEL THROAT (ROD WIPER)

Product Code	1. GUIDE RING	2. GUIDE RING	NUTRING	DUST SEAL	INITIAL PRESURE	SUPPORT RING	O-RING	D	D1	D2	L	L1	THREAD		
CNC-ÇB 40x20	20x24x9,5-1	-	20x28x5	20x28x5/7	-	36,4x41x1,25	36x3	50	41	21	50	40	44x1,5		
CNC-ÇB 40x22	22x26x9,5-1	-	22x30x5	22x30x5/7	-	36,4x41x1,25	36x3	50	41	23	50	40	44x1,5		
CNC-ÇB 40x25	25x29x9,5-1	-	25x35x6	25x33x5/7	-	36,4x41x1,25	36x3	50	41	26	50	40	44x1,5		
CNC-ÇB 40x28	28x32x9,5-1	-	28x38x6	28x36x5/7	-	36,4x41x1,25	36x3	50	41	29	50	40	44x1,5		
CNC-ÇB 50x25	25x29x9,5-1	-	25x35x6	25x33x5/7	-	45,5x51x1,25	44,45x3,53	60	51	26	50	40	54x1,5		
CNC-ÇB 50x28	28x32x9,5-1	-	28x38x6	28x36x5/7	-	45,5x51x1,25	44,45x3,53	60	51	29	50	40	54x1,5		
CNC-ÇB 50x30	30x35x15-1	-	30x40x8	30x38x5/7	-	45,5x51x1,25	44,45x3,53	60	51	31	50	40	54x1,5		
CNC-ÇB 50x35	35x40x15-1	-	35x45x8	35x43x5/7	-	45,5x51x1,25	44,45x3,53	60	51	36	50	40	54x1,5		
CNC-ÇB 55x25	25x29x9,5-1	-	25x35x6	25x33x5/7	-	50,5x56x1,25	50x3,53	65	56	26	50	40	59x1,5		
CNC-ÇB 55x30	30x35x15-1	-	30x40x8	30x38x5/7	-	50,5x56x1,25	50x3,53	65	56	31	50	40	59x1,5		
CNC-ÇB 55x35	35x40x15-1	-	35x45x8	35x43x5/7	-	50,5x56x1,25	50x3,53	65	56	36	50	40	59x1,5		
CNC-ÇB 60x30	30x35x15-2	-	30x40x8	30x38x5/7	-	55,5x61x1,25	53,57x53	70	61	31	70	58	65x1,5		
CNC-ÇB 60x35	35x40x15-2	-	35x45x8	35x43x5/7	-	55,5x61x1,25	53,57x53	70	61	36	70	58	65x1,5		
CNC-ÇB 60x40	40x45x15-2	-	40x50x10	40x48x5/7	-	55,5x61x1,25	53,57x53	70	61	41	70	58	65x1,5		
CNC-ÇB 60x45	45x50x15-2	-	45x55x10	45x55x5/7	-	55,5x61x1,25	53,57x53	70	61	46	70	58	65x1,5		
CNC-ÇB 63x30	30x35x15-2	-	35x45x8	35x43x5/7	-	58,5x64x1,25	57,15x3,53	75	64	31	70	58	69x1,5		
CNC-ÇB 63x35	35x40x15-2	-	35x45x8	35x43x5/7	-	58,5x64x1,25	57,15x3,53	75	64	36	70	58	69x1,5		
CNC-ÇB 63x40	40x45x15-2	-	40x50x10	40x48x5/7	-	58,5x64x1,25	57,15x3,53	75	64	41	70	58	69x1,5		
CNC-ÇB 63x45	45x50x15-2	-	45x55x10	45x55x5/7	-	58,5x64x1,25	57,15x3,53	75	64	46	70	58	69x1,5		
CNC-ÇB 63x50	50x55x15-2	-	50x60x10	50x60x5/7	-	58,5x64x1,25	57,15x3,53	75	64	51	70	58	69x1,5		
CNC-ÇB 65x30	30x35x15-2	-	30x40x8	30x38x5/7	-	60,5x66x1,25	59,92x3,53	80	66	31	70	58	69x1,5		
CNC-ÇB 65x35	35x40x15-2	-	35x45x8	35x43x5/7	-	60,5x66x1,25	59,92x3,53	80	66	36	70	58	69x1,5		
CNC-ÇB 65x40	40x45x15-2	-	40x50x10	40x48x5/7	-	60,5x66x1,25	59,92x3,53	80	66	41	70	58	69x1,5		
CNC-ÇB 65x45	45x50x15-2	-	45x55x10	45x55x5/7	-	60,5x66x1,25	59,92x3,53	80	66	46	70	58	69x1,5		
CNC-ÇB 70x30	30x35x15-2	-	30x40x8	30x38x5/7	-	65,5x71x1,25	65,10x3,53	85	71	31	70	58	75x2		
CNC-ÇB 70x35	35x40x15-2	-	35x45x8	35x43x5/7	-	65,5x71x1,25	65,10x3,53	85	71	36	70	58	75x2		
CNC-ÇB 70x40	40x45x15-2	-	40x50x10	40x48x5/7	-	65,5x71x1,25	65,10x3,53	85	71	41	70	58	75x2		
CNC-ÇB 70x45	45x50x9,5-2	-	45x55x10	45x55x5/7	45x60,5	65,5x71x1,25	65,10x3,53	85	71	46	70	58	75x2		
CNC-ÇB 70x50	50x55x15-2	-	50x60x10	50x60x5/7	-	65,5x71x1,25	65,10x3,53	85	71	51	70	58	75x2		
CNC-ÇB 70x55	55x60x15-2	-	55x65x10	55x65x5/7	-	65,5x71x1,25	65,10x3,53	85	71	56	70	58	75x2		
CNC-ÇB 75x35	35x40x15-2	-	35x45x8	35x43x5/7	-	70,5x76x1,25	69,85x3,53	90	76	36	70	58	80x2		
CNC-ÇB 75x40	40x45x9,5-2	-	40x50x10	40x48x5/7	40x55,5	70,5x76x1,25	69,85x3,53	90	76	41	70	58	80x2		
CNC-ÇB 75x45	45x50x9,5-2	-	45x55x10	45x55x5/7	45x60,5	70,5x76x1,25	69,85x3,53	90	76	46	70	58	80x2		
CNC-ÇB 75x50	50x55x9,5-2	-	50x60x10	50x60x5/7	50x65,5	70,5x76x1,25	69,85x3,53	90	76	51	70	58	80x2		
CNC-ÇB 75x55	55x60x15-2	-	55x65x10	55x65x5/7	-	70,5x76x1,25	69,85x3,53	90	76	56	70	58	80x2		
CNC-ÇB 80x30	30x35x15-2	-	30x40x8	30x38x5/7	-	75,5x81x1,25	73,03x3,53	95	81	31	70	58	85x2		
CNC-ÇB 80x35	35x40x15-2	-	35x45x8	35x43x5/7	-	75,5x81x1,25	73,03x3,53	95	81	36	70	58	85x2		
CNC-ÇB 80x40	40x45x9,5-2	-	40x50x10	40x48x5/7	40x55,5	75,5x81x1,25	73,03x3,53	95	81	41	70	58	85x2		
CNC-ÇB 80x45	45x50x9,5-2	-	45x55x10	45x55x5/7	45x60,5	75,5x81x1,25	73,03x3,53	95	81	46	70	58	85x2		
CNC-ÇB 80x50	50x55x9,5-2	-	50x60x10	50x60x5/7	50x65,5	75,5x81x1,25	73,03x3,53	95	81	51	70	58	85x2		
CNC-ÇB 80x55	55x60x9,5-2	-	55x65x5/7	55x65x5/7	-	75,5x81x1,25	73,03x3,53	95	81	56	70	58	85x2		
CNC-ÇB 80x60	60x65x15-2	-	60x70x10	60x70x5/7	-	75,5x81x1,25	73,03x3,53	95	81	61	70	58	85x2		
CNC-ÇB 85x40	40x45x9,5-2	-	45x55x10	45x55x5/7	45x60,5	79,7x86x1,40	78x4	100	86	41	70	58	90x2		
CNC-ÇB 85x45	45x50x9,5-2	-	45x55x10	45x55x5/7	45x60,5	79,7x86x1,40	78x4	100	86	46	70	58	90x2		
CNC-ÇB 85x50	50x55x9,5-2	-	50x60x10	50x60x5/7	50x65,5	79,7x86x1,40	78x4	100	86	51	70	58	90x2		
CNC-ÇB 85x55	55x60x9,5-2	-	55x65x10	55x65x5/7	55x70,5	79,7x86x1,40	78x4	100	86	56	70	58	90x2		

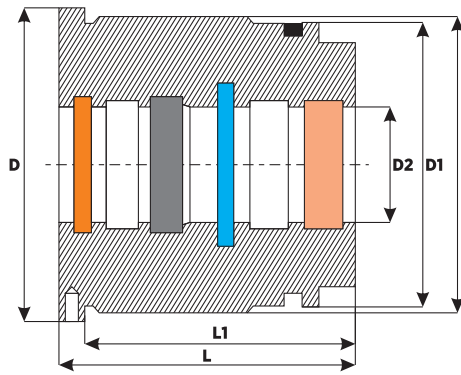


- DUST SEAL**
- NUTRING**
- O-RING**
- INITIAL PRESURE RING**
- GUIDE RING**



1040/1050 (QUALITY) STEEL THROAT (ROD WIPER)

Product Code	1. GUIDE RING	2. GUIDE RING	NUTRING	DUST SEAL	INITIAL PRESSURE	SUPPORT RING	O-RING	D	D1	D2	L	L1	THREAD		
CNC-ÇB 85x60	60x65x9,5-2	-	60x70x10	60x70x5/7	60x75,5	79,7x86x1,40	78x4	100	86	61	70	58	90x2		
CNC-ÇB 90x40	40x45x9,5-2	-	40x50x10	40x48x5/7	40x55,5	84,7x91x1,40	84x4	105	91	41	70	58	95x2		
CNC-ÇB 90x45	45x50x9,5-2	-	45x55x10	45x55x5/7	45x60,5	84,7x91x1,40	84x4	105	91	46	70	58	95x2		
CNC-ÇB 90x50	50x55x9,5-2	-	50x60x10	50x60x5/7	50x65,5	84,7x91x1,40	84x4	105	91	51	70	58	95x2		
CNC-ÇB 90x55	55x60x9,5-2	-	55x65x10	55x65x5/7	55x70,5	84,7x91x1,40	84x4	105	91	56	70	58	95x2		
CNC-ÇB 90x60	60x65x9,5-2	-	60x70x10	60x70x5/7	60x75,5	84,7x91x1,40	84x4	105	91	61	70	58	95x2		
CNC-ÇB 90x65	65x70x9,5-2	-	65x75x10	65x75x5/7	60x80,5	84,7x91x1,40	84x4	105	91	66	70	58	95x2		
CNC-ÇB 90x70	70x75x15-2	-	70x80x12	70x80x5/7		84,7x91x1,40	84x4	105	91	71	70	58	95x2		
CNC-ÇB 100x35	35x40x15-2	35x40x9,5-1	35x45x8	35x43x5/7		93x101x1,65	90x5	115	101	36	100	85	107x2		
CNC-ÇB 100x40	40x45x15-2	40x45x9,5-1	40x50x10	40x48x5/7	40x55,5	93x101x1,65	90x5	115	101	41	100	85	107x2		
CNC-ÇB 100x45	45x50x15-2	45x50x9,5-1	45x55x10	45x55x5/7	45x60,5	93x101x1,65	90x5	115	101	46	100	85	107x2		
CNC-ÇB 100x50	50x55x15-2	50x55x9,5-1	50x60x10	50x60x5/7	50x65,5	93x101x1,65	90x5	115	101	51	100	85	107x2		
CNC-ÇB 100x55	55x60x15-2	55x60x9,5-1	55x65x10	55x65x5/7	-	93x101x1,65	90x5	115	101	56	100	85	107x2		
CNC-ÇB 100x60	60x65x15-2	60x65x9,5-1	60x70x10	60x70x5/7	60x75,5	93x101x1,65	90x5	115	101	61	100	85	107x2		
CNC-ÇB 100x65	65x70x15-2	65x70x9,5-1	65x75x10	65x75x5/7	65x80,5	93x101x1,65	90x5	115	101	66	100	85	107x2		
CNC-ÇB 100x70	70x75x15-2	70x75x9,5-1	70x80x12	70x80x5/12	70x85,5	93x101x1,65	90x5	115	101	71	100	85	107x2		
CNC-ÇB 100x75	75x80x15-2	75x80x9,5-1	75x85x12	75x87x7/12		93x101x1,65	90x5	115	101	76	100	85	107x2		
CNC-ÇB 100x80	80x85x15-2	80x85x9,5-1	80x90x12	80x92x7/12	-	93x101x1,65	90x5	115	101	81	100	85	107x2		
CNC-ÇB 110x50	50x55x15-2	50x55x9,5-1	50x60x10	50x60x5/7	50x65,4	103x111x1,65	100x5	130	111	51	100	85	117x2		
CNC-ÇB 110x60	60x65x15-2	60x65x9,5-1	60x70x10	60x70x5/7	60x75,5	103x111x1,65	100x5	130	111	61	100	85	117x2		
CNC-ÇB 110x65	65x70x15-2	65x70x9,5-1	65x75x10	65x75x5/7	65x80,5	103x111x1,65	100x5	130	111	66	100	85	117x2		
CNC-ÇB 110x70	70x75x15-2	70x75x9,5-1	70x80x12	70x80x5/7	70x85,5	103x111x1,65	100x5	130	111	71	100	85	117x2		
CNC-ÇB 110x75	75x80x15-2	75x80x9,5-1	75x85x12	75x87x7/12	75x90,5	103x111x1,65	100x5	130	111	76	100	85	117x2		
CNC-ÇB 110x80	80x85x15-2	80x85x9,5-1	80x90x12	80x92x7/12	80x95,5	103x111x1,65	100x5	130	111	81	100	85	117x2		
CNC-ÇB 110x90	90x95x15-2	90x95x9,5-1	90x100x12	90x102x7/12	-	103x111x1,65	100x5	130	111	31	100	85	117x2		
CNC-ÇB 115x60	60x65x15-2	60x65x9,5-1	60x70x10	60x70x5/7	60x75,5	108x116x1,65	105x5	130	116	61	100	85	122x2		
CNC-ÇB 115x65	65x70x15-2	65x70x9,5-1	65x75x10	65x75x5/7	65x80,5	108x116x1,65	105x5	130	116	66	100	85	122x2		
CNC-ÇB 115x70	70x75x15-2	70x75x9,5-1	70x80x12	70x80x5/7	70x85,5	108x116x1,65	105x5	130	116	71	100	85	122x2		
CNC-ÇB 115x75	75x80x15-2	75x80x9,5-1	75x85x12	75x87x7/12	75x90,5	108x116x1,65	105x5	130	116	76	100	85	122x2		
CNC-ÇB 115x80	80x85x15-2	80x85x9,5-1	80x90x12	80x92x7/12	80x95,5	108x116x1,65	105x5	130	116	81	100	85	122x2		
CNC-ÇB 120x50	50x55x15-2	50x55x9,5-1	50x60x10	50x60x5/7	50x65,5	113x121x1,65	110x5	140	121	51	100	85	127x2		
CNC-ÇB 120x55	55x60x15-2	55x60x9,5-1	55x65x10	55x65x5/7	55x70,5	113x121x1,65	110x5	140	121	56	100	85	127x2		
CNC-ÇB 120x60	60x65x15-2	60x65x9,5-1	60x70x10	60x65x5/7	60x75,5	113x121x1,65	110x5	140	121	61	100	85	127x2		
CNC-ÇB 120x65	65x70x15-2	65x70x9,5-1	65x75x10	65x75x5/7	65x80,5	113x121x1,65	110x5	140	121	66	100	85	127x2		
CNC-ÇB 120x70	70x75x15-2	70x75x9,5-1	70x80x12	70x80x5/7	70x85,5	113x121x1,65	110x5	140	121	71	100	85	127x2		
CNC-ÇB 120x75	75x80x15-2	75x80x9,5-1	75x85x12	75x87x7/12	75x90,5	113x121x1,65	110x5	140	121	76	100	85	127x2		
CNC-ÇB 120x80	80x85x15-2	80x85x9,5-1	80x90x12	80x92x7/12	80x95,5	113x121x1,65	110x5	140	121	81	100	85	127x2		
CNC-ÇB 120x85	85x90x15-2	85x90x9,5-1	85x95x12	85x97x7/12	85x100,5	113x121x1,65	110x5	140	121	86	100	85	127x2		
CNC-ÇB 120x90	90x95x15-2	90x95x9,5-1	90x100x12	90x102x7/12	90x105,5	113x121x1,65	110x5	140	121	91	100	85	127x2		
CNC-ÇB 125x60	60x65x15-2	60x65x9,5-1	60x70x10	60x65x5/7	60x75,5	118x126x1,65	115x5	145	126	61	100	85	132x2		
CNC-ÇB 125x65	65x70x15-2	65x70x9,5-1	65x75x10	65x75x5/7	65x80,5	118x126x1,65	115x5	145	126	66	100	85	132x2		
CNC-ÇB 125x70	70x75x15-2	70x75x9,5-1	70x80x12	70x80x5/7	70x85,5	118x126x1,65	115x5	145	126	71	100	85	132x2		
CNC-ÇB 125x75	75x80x15-2	75x80x9,5-1	75x85x12	75x87x7/12	75x90,5	118x126x1,65	115x5	145	126	76	100	85	132x2		
CNC-ÇB 125x80	80x85x15-2	80x85x9,5-1	80x90x12	80x92x7/12	80x95,5	118x126x1,65	115x5	145	126	81	100	85	132x2		
CNC-ÇB 125-90	90x95x15-2	90x95x9,5-1	90x100x12	90x102x7/12	90x105,5	118x126x1,65	115x5	145	126	91	100	85	132x2		
CNC-ÇB 125x100	100x105x15-2	100x105x9,5-1	100x115x12	100x112x7/12	100x115,5	118x126x1,65	115x5	145	126	101	100	85	132x2		

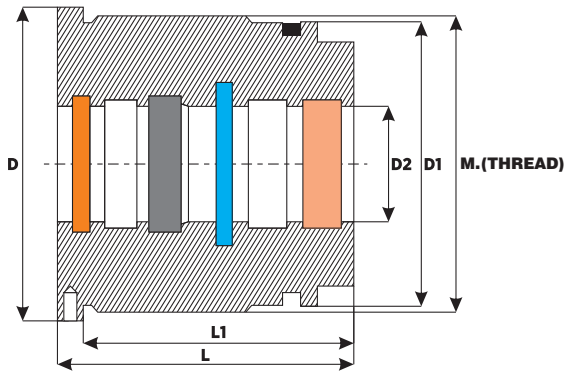


- DUST SEAL
- NUTRING
- O-RING
- INITIAL PRESURE RING
- GUIDE RING



1040/1050 (QUALITY) STEEL THROAT (ROD WIPER)

Product Code	1. GUIDE RING	2. GUIDE RING	NUTRING	DUST SEAL	INITIAL PRESSURE	SUPPORT RING	O-RING	D	D1	D2	L	L1	THREAD		
CNC-ÇB 130x60	60x65x15-2	60x65x9,5-1	60x70x10	60x65x5/7	60x75,5	121,1x131x1,9	120x6	150	131	61	100	85	137x2		
CNC-ÇB 130x70	70x75x15-2	70x75x9,5-1	70x80x12	70x80x5/7	70x85,5	121,1x131x1,9	120x6	150	131	71	100	85	137x2		
CNC-ÇB 130x80	80x85x15-2	80x85x9,5-1	80x90x12	80x92x7/12	80x95,5	121,1x131x1,9	120x6	150	131	81	100	85	137x2		
CNC-ÇB 130x90	90x95x15-2	90x95x9,5-1	90x100x12	90x102x7/12	90x105,5	121,1x131x1,9	120x6	150	131	91	100	85	137x2		
CNC-ÇB 130x100	100x105x15-2	100x105x9,5-1	100x115x12	100x112x7/12	100x115,5	121,1x131x1,9	120x6	150	131	101	100	85	137x2		
CNC-ÇB 140x70	70x75x15-2	70x75x9,5-1	70x80x12	70x80x5/7	70x85,5	131,1x141x1,90	130x6	160	141	71	100	85	147x2		
CNC-ÇB 140x75	75x80x15-2	75x80x9,5-1	75x85x12	75x87x7/12	75x90,5	131,1x141x1,90	130x6	160	141	76	100	85	147x2		
CNC-ÇB 140x80	80x85x15-2	80x85x9,5-1	80x90x12	80x92x7/12	80x95,5	131,1x141x1,90	130x6	160	141	81	100	85	147x2		
CNC-ÇB 140x90	90x95x15-2	90x95x9,5-1	90x100x12	90x102x7/12	90x105,5	131,1x141x1,90	130x6	160	141	91	100	85	147x2		
CNC-ÇB 140x100	100x105x15-2	100x105x9,5-1	100x115x12	100x112x7/12	100x115,5	131,1x141x1,90	130x6	160	141	101	100	85	147x2		
CNC-ÇB 140x110	110x115x15-2	110x115x9,5-1	110x125x12	110x122x7/12	110x125,5	131,1x141x1,90	130x6	160	141	111	100	85	147x2		
CNC-ÇB 150x80	80x85x15-2	80x85x9,5-1	80x90x12	80x92x7/12	80x95,5	141,1x151x1,90	140x6	170	151	81	100	85	157x2		
CNC-ÇB 150x90	90x95x15-2	90x95x9,5-1	90x100x12	90x102x7/12	90x105,5	141,1x151x1,90	140x6	170	151	91	100	85	157x2		
CNC-ÇB 150x100	100x105x15-2	100x105x9,5-1	100x115x12	100x112x7/12	100x115,5	141,1x151x1,90	140x6	170	151	101	100	85	157x2		
CNC-ÇB 160x80	80x85x15-2	80x85x9,5-1	80x90x12	80x92x7/12	80x95,5	151,1x161x1,90	150x6	180	161	81	100	85	167x2		
CNC-ÇB 160x90	90x95x15-2	90x95x9,5-1	90x100x12	90x102x7/12	90x105,5	151,1x161x1,90	150x6	180	161	91	100	85	167x2		
CNC-ÇB 160x100	100x105x15-2	100x105x9,5-1	100x115x12	100x112x7/12	100x115,5	151,1x161x1,90	150x6	180	161	101	100	85	167x2		
CNC-ÇB 160x110	110x115x15-2	110x115x9,5-1	110x125x12	110x122x7/12	110x125,5	151,1x161x1,90	150x6	180	161	111	100	85	167x2		
CNC-ÇB 160x120	120x125x15-2	120x125x9,5-1	120x135x15	120x132x7/12	120x135,5	151,1x161x1,90	150x6	180	161	121	100	85	167x2		
CNC-ÇB 170x100	100x105x15-2	100x105x9,5-1	100x115x12	100x112x7/12	100x115,5	161,1x171x1,90	160x6	200	171	101	100	85	177x2		
CNC-ÇB 170x110	110x115x15-2	110x115x9,5-1	110x125x12	110x122x7/12	110x125,5	161,1x171x1,90	160x6	200	171	111	100	85	177x2		
CNC-ÇB 170x120	120x125x15-2	120x125x9,5-1	120x135x15	120x132x7/12	120x135,5	161,1x171x1,90	160x6	200	171	121	100	85	177x2		
CNC-ÇB 180x80	80x85x15-2	80x85x9,5-1	80x90x12	80x91x7/12	80x95,5	171,1x181x1,90	170x6	210	181	81	100	85	187x2		
CNC-ÇB 180x90	90x95x15-2	90x95x9,5-1	90x100x12	90x102x7/12	90x105,5	171,1x181x1,90	170x6	210	181	91	100	85	187x2		
CNC-ÇB 180x100	100x105x15-2	100x105x9,5-1	100x115x12	100x112x7/12	100x115,5	171,1x181x1,90	170x6	210	181	101	100	85	187x2		
CNC-ÇB 180x110	110x115x15-2	110x115x9,5-1	110x125x12	110x122x7/12	110x125,5	171,1x181x1,90	170x6	210	181	111	100	85	187x2		
CNC-ÇB 180x120	120x125x15-2	120x125x9,5-1	120x135x15	120x132x7/12	120x135,5	171,1x181x1,90	170x6	210	181	121	100	85	187x2		
CNC-ÇB 180x130	130x135x15-2	130x135x9,5-1	130x150x15	130x142x7/12	130x145,5	171,1x181x1,90	170x6	210	181	131	100	85	187x2		
CNC-ÇB 180x140	140x145x15-2	140x145x9,5-1	140x160x15	140x152x7/12	140x155,5	171,1x181x1,90	170x6	210	181	141	100	85	187x2		
CNC-ÇB 200x80	80x85x15-2	80x85x9,5-1	80x90x12	80x91x7/12	80x95,5	-	190x6	230	201	81	100	85	207x2		
CNC-ÇB 200x90	90x95x15-2	90x95x9,5-1	90x100x12	90x102x7/12	90x105,5	-	190x6	230	201	91	100	85	207x2		
CNC-ÇB 200x100	100x105x15-2	100x105x9,5-1	100x115x12	100x112x7/12	100x115,5	-	190x6	230	201	101	100	85	207x2		
CNC-ÇB 200x110	110x115x15-2	110x115x9,5-1	110x125x12	110x122x7/12	110x125,5	-	190x6	230	201	111	100	85	207x2		
CNC-ÇB 200x120	120x125x15-2	120x125x9,5-1	120x135x15	120x132x7/12	120x135,5	-	190x6	230	201	121	100	85	207x2		
CNC-ÇB 200x130	130x135x15-2	130x135x9,7-1	130x150x15	130x142x7/12	130x145,5	-	190x6	230	201	131	100	85	207x2		
CNC-ÇB 200x140	140x145x15-2	140x145x9,7-1	140x160x15	140x152x7/12	140x155,5	-	190x6	230	201	141	100	85	207x2		
CNC-ÇB 220x100	100x105x15-2	100x105x9,7-1	100x115x12	100x112x7/12	100x115,5	-	210x6	250	221	101	110	90	227x2,5		
CNC-ÇB 220x110	110x115x15-2	110x115x9,7-1	110x125x12	110x122x7/12	110x125,5	-	210x6	250	221	111	110	90	227x2,5		
CNC-ÇB 220x120	120x125x15-2	120x125x9,7-1	120x135x15	120x132x7/12	120x135,5	-	210x6	250	221	121	110	90	227x2,5		
CNC-ÇB 220x130	130x135x15-2	130x135x9,7-1	130x150x15	130x142x7/12	130x145,5	-	210x6	250	221	131	110	90	227x2,5		
CNC-ÇB 220x140	140x145x15-2	140x145x9,7-1	140x160x15	140x152x7/12	140x155,5	-	210x6	250	221	141	110	90	227x2,5		
CNC-ÇB 220x150	150x155x15-2	150x155x9,7-1	150x170x15	150x172x7/12	-	-	210x6	250	221	151	110	90	227x2,5		
CNC-ÇB 220x160	160x165x15-2	160x165x9,7-1	160x180x15	160x172x7/12	-	-	210x6	250	221	161	110	90	227x2,5		
CNC-ÇB 230x100	100x105x15-2	100x105x9,7-1	100x115x12	100x112x7/12	100x115,5	-	220x6	280	231	101	110	90	237x2,5		
CNC-ÇB 230x110	110x115x15-2	110x115x9,7-1	110x125x12	110x122x7/12	110x125,5	-	220x6	280	231	111	110	90	237x2,5		
CNC-ÇB 230x120	120x125x15-2	120x125x9,7-1	120x135x15	120x132x7/12	120x135,5	-	220x6	280	231	121	110	90	237x2,5		

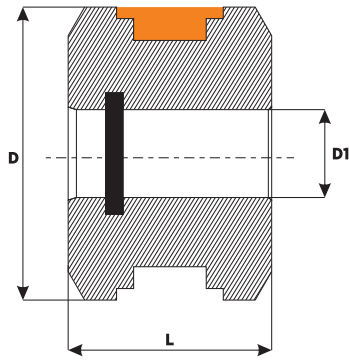


- DUST SEAL**
- NUTRING**
- O-RING**
- INITIAL PRESURE RING**
- GUIDE RING**



1040/1050 (QUALITY) STEEL THROAT (ROD WIPER)

Product Code	1. GUIDE RING	2. GUIDE RING	NUTRING	DUST SEAL	INITIAL PRESSURE	SUPPORT RING	O-RING	D	D1	D2	L	L1	THREAD		
CNC-ÇB 230x130	130x135x15-2	130x135x9,7-1	130x150x15	130x142x7/12	130x145,5	-	220x6	280	231	131	110	90	237x2,5		
CNC-ÇB 230x140	140x145x15-2	140x145x9,7-1	140x160x15	140x152x7/12	140x155,5	-	220x6	280	231	141	110	90	237x2,5		
CNC-ÇB 230x150	150x155x15-2	150x155x9,7-1	150x170x15	150x162x7/12	-	-	220x6	270	231	151	110	90	237x2,5		
CNC-ÇB 230x160	160x165x15-2	160x165x9,7-1	160x180x15	160x172x7/12	-	-	220x6	270	231	161	110	90	237x2,5		
CNC-ÇB 250x100	100x105x15-2	100x105x9,7-1	100x115x12	100x112x7/12	100x115,5	-	240x6	300	251	101	110	90	247x2,5		
CNC-ÇB 250x110	110x115x15-2	110x115x9,7-1	110x125x12	110x122x7/12	110x125,5	-	240x6	300	251	111	110	90	247x2,5		
CNC-ÇB 250x120	120x125x15-2	120x125x9,7-1	120x135x15	120x132x7/12	120x135,5	-	240x6	300	251	121	110	90	247x2,5		
CNC-ÇB 250x130	130x135x15-2	130x135x9,5-1	130x150x15	130x142x7/12	130x145,5	-	240x6	300	251	131	110	90	247x2,5		
CNC-ÇB 250x140	140x145x15-2	140x145x9,7-1	140x160x15	140x152x7/12	140x155,5	-	240x6	300	251	141	110	90	247x2,5		
CNC-ÇB 250x150	150x155x15-2	150x155x9,7-1	150x170x15	150x162x7/12	-	-	240x6	300	251	151	110	90	247x2,5		
CNC-ÇB 250x160	160x165x15-2	160x165x9,7-1	160x180x15	160x172x7/12	-	-	240x6	300	251	161	110	90	247x2,5		

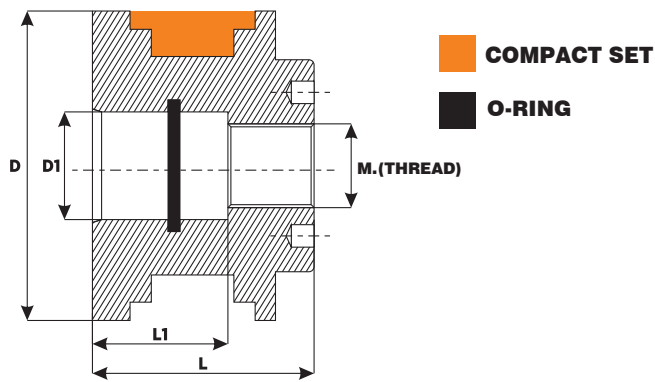


COMPACT SET
O-RING



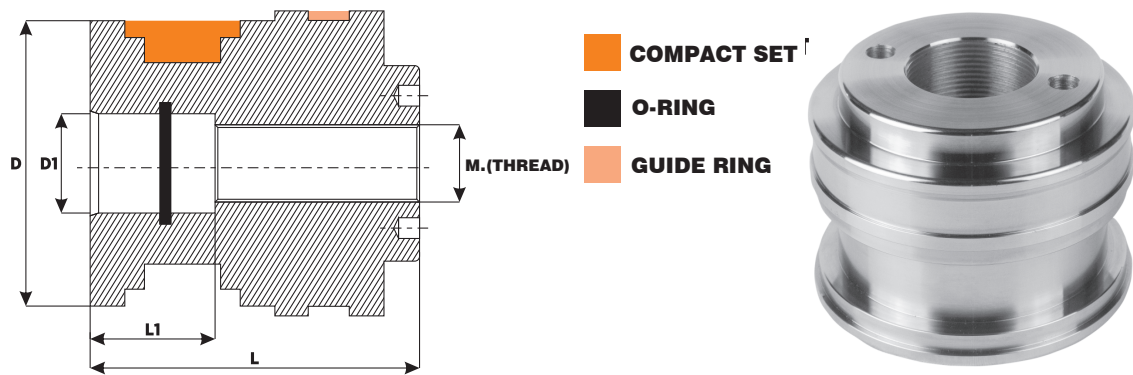
HYDRAULIC CYLINDER STEEL PISTON STRAIGHT TYPE

Product Code	COMPACT SET	O-RING	D	D1	L		
CNC-P 32x15	32x24x15,5x3,10	-	32	15	32		
CNC-P 35x16	35x25x16,4x6x35	16x3	35	16	40		
CNC-P 40x16	40x32x15,5x3x20	16x3	40	16	40		
CNC-P 40x20	40x32x15,5x3x20	20x3	40	20	40		
CNC-P 45x20	45x35x16,4x6,35	20x3	45	20	40		
CNC-P 50x16	50x38x20,5x4x20	16x3	50	16	40		
CNC-P 50x20	50x38x20,5x4x20	20x3	50	20	40		
CNC-P 50x30	50x38x20,5x4x20	30x3	50	30	40		
CNC-P 55x20	55x39x20,5x3x10	20x3	55	20	40		
CNC-P 60x20	60x48x20,5x4,20	20x3	60	20	40		
CNC-P 63x20	63x51x20,5x4x20	20x3	63	20	40		
CNC-P 63x25	63x51x20,5x4x20	25x3	63	25	40		
CNC-P 63x30	63x51x20,5x4x20	30x3	63	30	40		
CNC-P 65x25	65x49x20,5x3,10	25x3	65	25	40		
CNC-P 70x25	70x58x20,5x4x20	25x3	70	25	40		
CNC-P 70x30	30x58x20,5x4,20	30x3	70	30	40		
CNC-P 75x32	75x55x22,4x6,35	32x3	75	32	50		
CNC-P 80x27	80x66x22,4x5,20	27x3	80	27	50		
CNC-P 80x30	80x66x22,4x5,20	30x3	80	30	50		
CNC-P 85x32	85x65x22,4x6,35	32x3	85	32	50		
CNC-P 90x30	90x76x22,4x5,20	30x3	90	30	50		
CNC-P 100x33	100x86x22,4x5,20	33x3	100	33	50		
CNC-P 100x40	100x86x22,4x5,20	40x4	100	40	50		
CNC-P 110x40	110x96x22,4x5,20	40x4	110	40	50		
CNC-P 115x40	115x101x22,4x5,20	40x4	115	40	50		
CNC-P 120x40	120x106x22,4x5,20	40x4	120	40	50		
CNC-P 125x40	125x103x26,5x5,10	40x4	125	40	50		
CNC-P 130x40	130x105x25,4x6,35	40x4	130	40	60		
CNC-P 140x40	140x123x26,5x7,20	40x4	140	40	60		
CNC-P 150x40	150x125x25,4x6,35/1	40x4	150	40	60		
CNC-P 160x50	160x143x26,5x7,20	50x4	160	50	60		
CNC-P 170x50	170x145x25,4x12,70	50x4	170	50	65		
CNC-P 180x50	180x163x26,5x7,20	50x4	180	50	60		
CNC-P 190x50	190x165x25,4x12,7	50x4	190	50	65		
CNC-P 200x55	200x175x25,4x12,70/1	55x4	200	55	65		
CNC-P 220x70	220x190x35,4x6,35/1	70x4	220	70	70		
CNC-P 250x80	250x225x25,4x12,70	80x4	250	80	70		



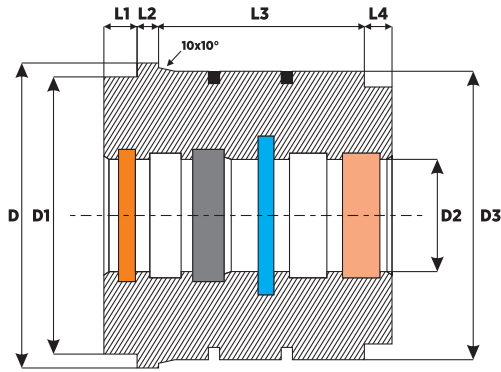
1040/1050 STEEL PISTON THREADED TYPE

Product Code	COMPACT SET	O-RING	D	D1	L	L1	THREAD		
CNC-PV-40	40x32x15,5x3,20	20,22x3,53	40	20	45	22,5	18x1,5		
CNC-PV-45	45x35x16,40x6,35	20,22x3,53	45	20	45	22,5	18x1,5		
CNC-PV-50	50x38x20,5x4,20	24,99x3,53	50	25	45	22,5	20x2		
CNC-PV-55	55x39x20,5x3,10	24,99x3,53	55	25	45	22,5	20x2		
CNC-PV-60	60x48x20,5x3,10	29,75x3,53	60	30	45	22,5	27x2		
CNC-PV-63	63x51x20,5x4,20	29,75x3,53	63	30	45	22,5	27x2		
CNC-PV-65	65x49x20,5x4,20	29,75x3,53	65	30	45	22,5	27x2		
CNC-PV-70	70x58x20,5x4,20	29,75x3,53	70	30	45	22,5	27x2		
CNC-PV-75	75x55x22,4x6,35	29,75x3,53	75	30	50	25	27x2		
CNC-PV-80	80x66x22,4x5,20	34,52x3,53	80	35	50	25	30x2		
CNC-PV-85	85x65x22,4x6,35	39,70x3,53	85	40	50	25	35x2		
CNC-PV-90	90x76x22,4x5,20	39,70x3,53	90	40	50	25	35x2		
CNC-PV-100	100x86x22,4x5,20	45x4	100	45	50	25	40x2		
CNC-PV-110	110x96x22,4x5,20	45x4	110	45	50	25	40x2		
CNC-PV-115	115x101x22,4x5,20	45x4	115	45	50	25	40x2		
CNC-PV-120	120x106x22,4x5,20	50x4	120	50	50	25	45x2		
CNC-PV-125	125x103x26,5x5,10	50x4	125	50	60	30	45x2		
CNC-PV-130	130x105x125,4x6,35	60x4	130	60	60	30	50x2		
CNC-PV-140	140x123x26,5x7,20	60x4	140	60	60	30	55x2		
CNC-PV-150	150x125x25,4x6,35/1	65x4	150	65	60	30	60x2		
CNC-PV-160	160x143x26,5x7,20	65x4	160	65	60	30	60x2		
CNC-PV-170	170x145x25,4x12,70	70x4	170	70	65	30	65x2		
CNC-PV-180	180x163x26,5x7,20	75x4	180	75	60	30	70x2		
CNC-PV-190	190x165x22,4x12,7	85x4	190	85	65	30	75x2		
CNC-PV-200	200x175x25,40x12,70/1	80x5	200	80	70	30	75x2		
CNC-PV-220	220x190x35,40x6,35/1	90x5	220	90	70	30	85x2		
CNC-PV-230	230x205x25,4x12,70	100x5	230	100	70	30	95x2,5		
CNC-PV-250	250x225x25,40x12,70	100x5	250	100	70	30	95x2,5		



1040/1050 STEEL PISTON SINGLE BEDDING THREADED TYPE

Product Code	COMPACT SET	GUIDE RING	O-RING	D	D1	L	L1	THREAD		
CNC-PV-Y50	50x38x20,5x4,20	45x50x15	24,99x3,53	50	25	65	30	22x1,5		
CNC-PV-Y60	60x48x20,5x4,20	50x60x15	29,75x3,53	60	30	65	30	27x2		
CNC-PV-Y63	63x51x20,5x4,20	58x63x9,5	29,75x3,53	63	30	65	30	27x2		
CNC-PV-Y70	70x58x20,5x4,20	65x70x15	29,75x3,53	70	30	65	30	27x2		
CNC-PV-Y80	80x66x22,4x5,20	75x80x15	34,52x3,53	80	35	70	30	30x2		
CNC-PV-Y90	90x76x22,4x5,20	85x90x15	39,70x3,53	90	40	70	30	35x2		
CNC-PV-Y100	100x86x22,4x5,20	95x100x15	45x4	100	45	70	30	40x2		
CNC-PV-Y110	110x96x22,4x5,20	105x110x15	45x4	115	45	70	30	40x2		
CNC-PV-Y115	115x101x22,4x5,20	110x115x15	45x4	115	45	70	30	40x2		
CNC-PV-Y120	120x106x22,4x5,20	115x120x15	50x4	120	50	70	30	45x2		
CNC-PV-Y125	125x103x26,5x5,10	120x125x15	50x4	125	60	70	30	50x2		
CNC-PV-Y130	130x105x25,4x6,35	125x130x15	60x4	130	60	70	30	50x2		
CNC-PV-Y140	140x123x25,5x7,20	135x140x15	60x4	140	60	80	30	55x2		
CNC-PV-Y150	150x125x25,4x6,35/1	145x150x15	65x4	150	65	80	30	60x2		
CNC-PV-Y160	160x143x26,5x7,20	155x160x15	65x4	160	65	80	30	60x2		
CNC-PV-Y170	170x145x25,4x12,70	165x170x15	70x4	170	85	90	30	80x2		
CNC-PV-Y180	180x163x26,5x7,20	175x180x15	75x4	180	85	80	30	80x2		
CNC-PV-Y200	200x175x25,40x12,70/1	195x200x15	80x5	200	80	85	35	75x2		
CNC-PV-Y220	220x190x35,40x635/1	215x220x15	100x5	220	100	90	50	95x2		
CNC-PV-Y250	250x225x25,40x12,70	245x250x15	100x5	220	100	90	50	95x2		

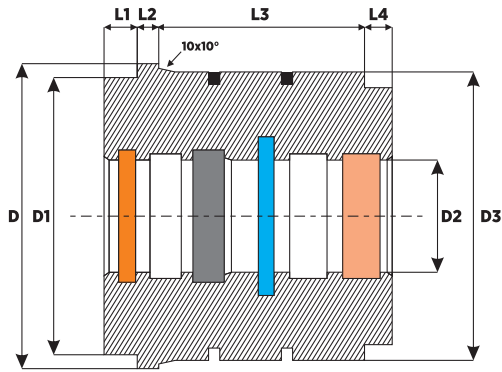


- DUST SEAL**
- NUTRING**
- O-RING**
- INITIAL PRESURE RING**
- GUIDE RING**



MOBILE CRANE EXTENTION WIPERS (WITH OUTER NUT)

Product Code	GUIDE RING	NUTRING	IN. PRES. RING	DUST SEAL	O-RING	D	D1	D2	D3	L1	L2	L3	L4				
CNC-UK-50x30	30x35x15	30x40x8	-	30x38x5/7	41x4	56	45	31	50	12	8	52	8				
CNC-UK-63x40	40x45x15x3	40x50x10	-	40x48x5/7	56x4	71	60	41	63	15	12	68	10				
CNC-UK-63x45	45x50x15x3	40x50x10	-	45x55x5/7	56x4	71	60	46	63	15	12	68	10				
CNC-UK-70x40	40x45x15x3	40x50x10	40x55,5x6,3	40x48x5/7	62x4	81	70	41	70	15	12	68	10				
CNC-UK-70x45	45x50x15x3	45x55x10	45x60,5x6,3	45x55x5/7	62x4	81	70	46	70	15	12	68	10				
CNC-UK-70x50	50x55x15x3	50x60x10	-	50x60x5/7	62x4	81	70	51	70	15	12	68	10				
CNC-UK-70x55	55x60x15x3	55x65x10	-	55x65x5/7	62x4	81	70	56	70	15	12	68	10				
CNC-UK-80x40	40x45x15x3	40x50x10	40x55,5x6,3	40x48x5/7	73x4	91	75	41	80	15	12	68	10				
CNC-UK-80x45	45x50x15x3	45x55x10	45x60,5x6,3	45x55x5/7	73x4	91	70	46	80	15	12	68	10				
CNC-UK-80x50	50x55x15x3	50x60x10	50x65,5x6,3	50x60x5/7	73x4	91	75	51	80	15	12	68	10				
CNC-UK-80x55	55x60x15x3	55x65x10	55x70,5x6,3	55x65x5/7	73x4	91	75	56	80	15	12	68	10				
CNC-UK-80x60	60x65x15x3	60x70x10	-	60x70x5/7	73x4	91	75	61	80	15	12	68	10				
CNC-UK-90x40	40x45x15x3	40x50x10	40x55,5x6,3	40x48x5/7	82x4	100	85	41	90	15	12	68	10				
CNC-UK-90x45	45x50x15x3	45x55x10	45x60,5x6,3	45x55x5/7	82x4	100	85	46	90	15	12	68	10				
CNC-UK-90x50	50x55x15x3	50x60x10	50x65,5x6,3	50x60x5/7	82x4	100	85	51	90	15	12	68	10				
CNC-UK-90x55	55x60x15x3	55x65x10	55x70,5x6,3	55x65x5/7	82x4	100	85	56	90	15	12	68	10				
CNC-UK-90x60	60x65x15x3	60x70x10	60x75,5x6,3	60x70x5/7	82x4	100	85	61	90	15	12	68	10				
CNC-UK-90x65	65x70x15x3	65x70x10	65x80,5x6,3	65x75x5/7	82x4	100	85	66	90	15	12	68	10				
CNC-UK-90x70	70x75x15x3	70x80x12	-	70x80x5/7	82x4	100	85	71	90	15	12	68	10				
CNC-UK-100x50	50x55x15x3	50x60x10	50x65,5x6,3	50x60x5/7	92x4	110	95	51	100	15	12	68	10				
CNC-UK-100x55	55x60x15x3	55x65x10	55x70,5x6,3	55x65x5/7	92x4	110	95	56	100	15	12	68	10				
CNC-UK-100x60	60x65x15x3	60x70x10	60x75,5x6,3	60x70x5/7	92x4	110	95	61	100	15	12	68	10				
CNC-UK-100x65	65x70x15x3	65x70x10	65x80,5x6,3	65x75x5/7	92x4	110	95	66	100	15	12	68	10				
CNC-UK-100x70	70x75x15x3	70x80x12	70x85,5x6,3	70x80x5/7	92x4	110	95	71	100	15	12	68	10				
CNC-UK-100x75	75x80x15x3	75x85x12	75x90,5x6,3	75x87x7/12	92x4	110	95	76	100	15	12	68	10				
CNC-UK-100x80	80x85x15x3	80x90x12	80x95,5x6,3	80x92x7/12	92x4	110	95	81	100	15	12	68	10				
CNC-UK-110x50	50x55x15x3	50x60x10	50x65,5x6,3	50x60x5/7	102x4	125	105	51	110	15	12	68	10				
CNC-UK-110x55	55x60x15x3	55x65x10	55x70,5x6,3	55x65x5/7	102x4	125	105	56	110	15	12	68	10				
CNC-UK-110x60	60x65x15x3	60x70x10	60x75,5x6,3	60x70x5/7	102x4	125	105	61	110	15	12	68	10				
CNC-UK-110x65	65x70x15x3	65x70x10	65x80,5x6,3	65x75x5/7	102x4	125	105	66	110	15	12	68	10				
CNC-UK-110x70	70x75x15x3	70x80x12	70x85,5x6,3	70x80x5/7	102x4	125	105	71	110	15	12	68	10				
CNC-UK-110x75	75x80x15x3	75x85x12	75x90,5x6,3	75x87x7/12	102x4	125	105	76	110	15	12	68	10				
CNC-UK-110x80	80x85x15x3	80x90x12	80x95,5x6,3	80x92x7/12	102x4	125	105	81	110	15	12	68	10				
CNC-UK-110x85	85x90x15x3	85x95x12	85x100,5x6,3	85x97x7/12	102x4	125	105	86	110	15	12	68	10				
CNC-UK-115x60	60x65x15x3	60x70x10	60x75,5x6,3	60x70x5/7	108x4	125	105	61	115	15	12	68	10				
CNC-UK-115x65	65x70x15x3	65x70x10	65x80,5x6,3	65x75x5/7	108x4	125	105	66	115	15	12	68	10				
CNC-UK-115x70	70x75x15x3	70x80x12	70x85,5x6,3	70x80x5/7	108x4	125	105	71	115	15	12	68	10				
CNC-UK-115x75	75x80x15x3	75x85x12	75x90,5x6,3	75x87x7/12	108x4	125	105	76	115	15	12	68	10				
CNC-UK-115x80	80x85x15x3	80x90x12	80x95,5x6,3	80x92x7/12	108x4	125	105	81	115	15	12	68	10				
CNC-UK-120x60	60x65x15x3	60x70x10	60x75,5x6,3	60x70x5/7	112x4	135	110	61	120	15	12	68	10				
CNC-UK-120x65	65x70x15x3	65x70x10	65x80,5x6,3	65x75x5/7	112x4	135	110	66	120	15	12	68	10				
CNC-UK-120x70	70x75x15x3	70x80x12	70x85,5x6,3	70x80x5/7	112x4	135	110	71	120	15	12	68	10				
CNC-UK-120x75	75x80x15x3	75x85x12	75x90,5x6,3	75x87x7/12	112x4	135	110	76	120	15	12	68	10				
CNC-UK-120x80	80x85x15x3	80x90x12	80x95,5x6,3	80x92x7/12	112x4	135	110	81	120	15	12	68	10				
CNC-UK-120x85	85x90x15x3	85x95x12	85x100,5x6,3	85x97x7/12	112x4	135	110	86	120	15	12	68	10				
CNC-UK-120x90	90x95x15x3	90x100x12	90x105,5x6,3	90x102x7/12	112x4	135	110	91	120	15	12	68	10				

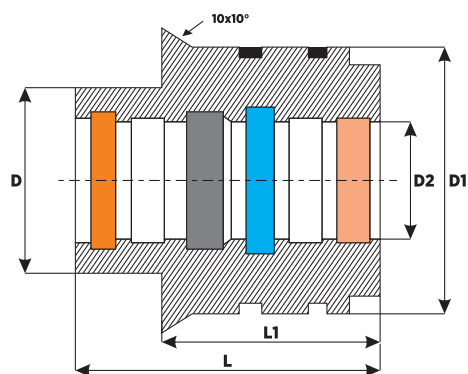


- DUST SEAL**
- NUTRING**
- O-RING**
- INITIAL PRESURE RING**
- GUIDE RING**



MOBILE CRANE EXTENTION WIPERS (WITH OUTER NUT)

Product Code	GUIDE RING	NUTRING	IN. PRES. RING	DUST SEAL	O-RING	D	D1	D2	D3	L1	L2	L3	L4		
CNC-UK-125x70	70x75x15x3	70x80x12	70x85,5x6,3	70x80x5/7	118x4	140	115	71	125	15	12	68	10		
CNC-UK-125x75	75x80x15x3	75x85x12	75x90,5x6,3	75x87x7/12	118x4	140	115	76	125	15	12	68	10		
CNC-UK-125x80	80x85x15x3	80x90x12	80x95,5x6,3	80x92x7/12	118x4	140	115	81	125	15	12	68	10		
CNC-UK-125x90	90x95x15x3	90x100x12	90x105,5x6,3	90x102x7/12	118x4	140	115	91	125	15	12	68	10		
CNC-UK-125x100	100x105x15x3	100x115x12	100x115,5x6,3	100x112x7/12	118x4	140	115	101	125	15	12	68	10		
CNC-UK-130x70	70x75x15x3	70x80x12	70x85,5x6,3	70x80x5/7	123x4	145	125	71	130	15	12	68	10		
CNC-UK-130x75	75x80x15x3	75x85x12	75x90,5x6,3	75x87x7/12	123x4	145	125	76	130	15	12	68	10		
CNC-UK-130x80	80x85x15x3	80x90x12	80x95,5x6,3	80x92x7/12	123x4	145	125	81	130	15	12	68	10		
CNC-UK-130x85	85x90x15x3	85x95x12	85x100,5x6,3	85x97x7/12	123x4	145	125	86	130	15	12	68	10		
CNC-UK-130x90	90x95x15x3	90x100x12	90x105,5x6,3	90x102x7/12	123x4	145	125	91	130	15	12	68	10		
CNC-UK-130x95	95x100x15x3	95x105x12	95x110,5x6,3	95x107x7/12	123x4	145	125	96	130	15	12	68	10		
CNC-UK-130x100	100x105x15x3	100x115x12	100x115,5x6,3	100x112x7/12	123x4	145	125	101	130	15	12	68	10		
CNC-UK-140x60	60x65x15x3	60x70x10	60x75,5x6,3	60x70x5/7	132x4	155	130	61	140	15	12	68	10		
CNC-UK-140x70	70x75x15x3	70x80x12	70x85,5x6,3	70x80x5/7	132x4	155	130	71	140	15	12	68	10		
CNC-UK-140x80	80x85x15x3	80x90x12	80x95,5x6,3	80x92x7/12	132x4	155	130	81	140	15	12	68	10		
CNC-UK-140x85	85x90x15x3	85x95x12	85x100,5x6,3	85x97x7/12	132x4	155	130	86	140	15	12	68	10		
CNC-UK-140x90	90x95x15x3	90x100x12	90x105,5x6,3	90x102x7/12	132x4	155	130	91	140	15	12	68	10		
CNC-UK-140x95	95x100x15x3	95x105x12	95x110,5x6,3	95x107x7/12	132x4	155	130	96	140	15	12	68	10		
CNC-UK-140x100	100x105x15x3	100x115x12	100x115,5x6,3	100x112x7/12	132x4	155	130	101	140	15	12	68	10		
CNC-UK-140x110	110x115x15x3	110x115x12	110x125,5x6,3	110x122x7/12	132x4	155	130	111	140	15	12	68	10		
CNC-UK-150x90	90x95x15x3	90x100x12	90x105,5x6,3	90x102x7/12	142x4	165	130	91	150	15	12	68	10		
CNC-UK-150x100	100x105x15x3	100x115x12	100x115,5x6,3	100x112x7/12	142x4	165	130	101	150	15	12	68	10		
CNC-UK-150x110	110x115x15x3	110x125x12	110x125,5x6,3	110x122x7/12	142x4	165	130	111	150	15	12	68	10		
CNC-UK-150x120	120x125x15x3	120x135x15	120x135,5x6,3	120x132x7/12	142x4	165	130	121	150	15	12	68	10		
CNC-UK-160x100	100x105x15x3	100x115x12	100x115,5x6,3	100x112x7/12	152x4	175	150	101	160	15	12	68	10		
CNC-UK-160x120	120x125x15x3	120x135x15	120x135,5x6,3	120x132x7/12	152x4	175	150	111	160	15	12	68	10		
CNC-UK-160x130	130x135x15x3	130x150x15	130x145,5x6,3	130x142x7/12	152x4	175	150	131	160	15	12	68	10		

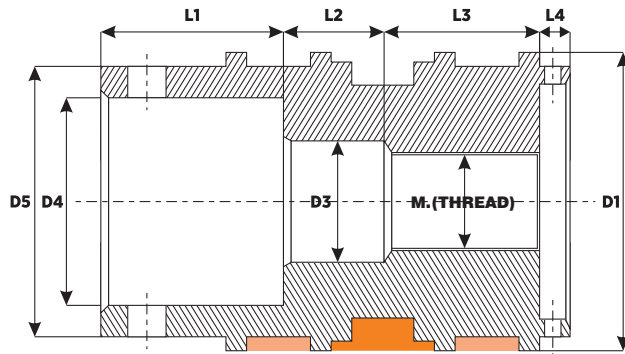


- DUST SEAL**
- NUTRING**
- O-RING**
- INITIAL PRESURE RING**
- GUIDE RING**



MOBILE CRANE FASTENING TYPE ROD WIPERS

Product Code	GUIDE RING	NUTRING	INITIAL PRES. RING	DUST SEAL	O-RING	D	D1	D2	L	L1		
CNC-ÇB-160x90	90x95x15-3	90x100x12	90x105,5x6,3	90x102x7/12	152x4	130	160	90	105	55		
CNC-ÇB-160x100	100x105x15-3	100x115x12	100x115,5x6,3	100x112x7/12	152x4	130	160	100	105	55		
CNC-ÇB-160x110	110x115x15-3	110x125x12	110x125,5x6,3	110x122x7/12	152x4	130	160	110	105	55		
CNC-ÇB-170x110	110x115x15-3	110x125x12	110x125,5x6,3	110x122x7/12	162x4	140	170	110	105	55		
CNC-ÇB-180x90	90x95x15-3	90x100x12	90x105,5x6,3	90x102x7/12	172x4	150	180	90	105	55		
CNC-ÇB-180x95	95x100x15-3	95x105x12	95x110,5x6,3	95x107x7/12	172x4	150	180	95	105	55		
CNC-ÇB-180x100	100x105x15-3	100x115x12	100x115,5x6,3	100x112x7/12	172x4	150	180	100	105	55		
CNC-ÇB-180x110	110x115x15-3	110x125x12	110x125,5x6,3	110x122x7/12	172x4	150	180	110	105	55		
CNC-ÇB-180x120	120x125x15-3	120x135x15	120x135,5x6,3	120x132x7/12	172x4	150	180	120	105	55		
CNC-ÇB-200x90	90x95x15-3	90x100x12	90x105,5x6,3	90x102x7/12	192x4	160	200	90	105	55		
CNC-ÇB-200x100	100x105x15-3	100x115x12	100x115,5x6,3	100x112x7/12	192x4	160	200	100	105	55		
CNC-ÇB-200x110	110x115x15-3	110x125x12	110x125,5x6,3	110x122x7/12	192x4	160	200	110	105	55		
CNC-ÇB-200x120	120x125x15-3	120x135x15	120x135,5x6,3	120x132x7/12	192x4	160	200	120	105	55		
CNC-ÇB-200x140	140x145x15-3	140x160x15	140x155,5x6,3	140x152x7/12	192x4	160	200	140	105	55		
CNC-ÇB-220x100	100x105x15-3	100x115x12	100x115,5x6,3	100x112x7/12	212x4	180	220	100	105	55		
CNC-ÇB-220x110	110x115x15-3	110x125x12	110x125,5x6,3	110x122x7/12	212x4	180	220	110	105	55		
CNC-ÇB-220x120	120x125x15-3	120x135x15	120x135,5x6,3	120x132x7/12	212x4	180	220	120	105	55		
CNC-ÇB-220x125	125x130x15-3	125x145x15	125x140x6,3	125x137x7/12	212x4	180	220	125	105	55		
CNC-ÇB-230x110	110x115x15-3	110x125x12	110x125,5x6,3	110x122x7/12	222x4	190	230	110	105	55		
CNC-ÇB-230x120	120x125x15-3	120x135x15	120x135,5x6,3	120x132x7/12	222x4	190	230	120	105	55		
CNC-ÇB-230x130	130x135x15-3	130x150x15	130x145,5x6,3	130x142x7/12	222x4	190	230	130	105	55		
CNC-ÇB-230x140	140x145x15-3	140x160x15	140x155,5x6,3	140x152x7/12	222x4	190	230	140	105	55		
CNC-ÇB-250x110	110x115x15-3	110x125x12	110x125,5x6,3	110x122x7/12	242x4	200	250	110	105	55		
CNC-ÇB-250x120	120x125x15-3	120x135x15	120x135,5x6,3	120x132x7/12	242x4	200	250	120	105	55		
CNC-ÇB-250x130	130x135x15-3	130x150x15	130x145,5x6,3	130x142x7/12	242x4	200	250	130	105	55		
CNC-ÇB-250x140	140x145x15-3	140x160x15	140x155,5x6,3	140x152x7/12	242x4	200	250	140	105	55		
CNC-ÇB-250x150	150x155x15-3	150x170x15	-	150x162x7/12	242x4	200	250	150	105	55		
CNC-ÇB-250x160	160x165x15-3	160x180x15	-	160x172x7/12	242x4	200	250	160	105	55		

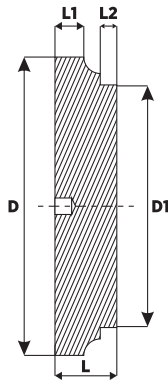


COMPACT SET
GUIDE RING



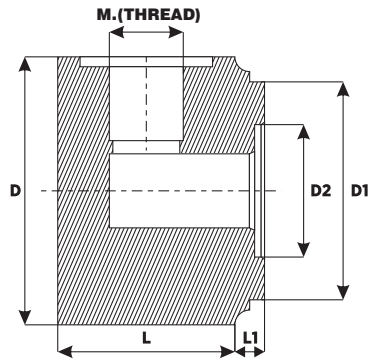
MOBILE CRANE EXTENTION PISTONS

Product Code	GUIDE RING	COMPACT SET	O-RING	THREAD	D1	D3	D4	D5	L1	L2	L3	L4		
CNC-UP-63	58x63x9,5x2	63x51x20,5x4,20	27x4	32x2	63	35	48	58	50	24	35	11		
CNC-UP-70	65x70x9,5x2	70x58x20,5x4,20	30x4	35x2	70	38	50	65	50	24	35	11		
CNC-UP-80	75x80x9,5x2	80x66x22,4x5,20	30x4	35x2	80	38	60	75	50	24	35	11		
CNC-UP-90	95x90x9,5x2	90x76x22,4x5,20	35x4	40x2	90	43	70	85	50	24	35	11		
CNC-UP-100	95x100x9,5x2	100x86x22,4x5,20	40x4	45x2	100	48	75	95	50	24	35	11		
CNC-UP-110	105x110x9,5x2	110x96x22,4x5,20	45x4	50x2	115	53	80	105	50	24	35	11		
CNC-UP-115	110x115x9,5x2	115x101x22,4x5,20	45x4	50x2	115	53	85	110	50	24	35	11		
CNC-UP-120	115x120x9,5x2	120x106x22,4x5,20	55x4	60x2	120	63	95	115	50	24	35	11		
CNC-UP-125	120x125x9,5-2	125x103x25,4x6,10	55x4	60x2	125	63	100	120	50	24	35	11		
CNC-UP-130	125x130x9,5-2	130x105x25,4x5,10	55x4	60x2	130	63	100	125	50	24	35	11		
CNC-UP-140	135x140x9,5-2	140x123x26,5x7,20	55x4	60x2	140	63	110	135	50	24	35	11		
CNC-UP-150	145x150x9,5-2	150x125x25,4x6,35/1	55x4	60x2	150	63	120	145	50	24	35	11		



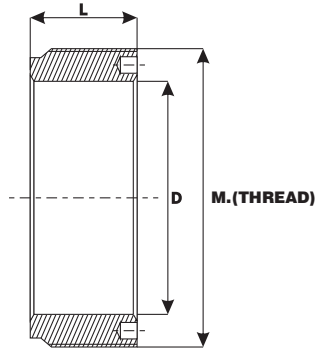
CYLINDER BACK COVER BASIC TYPE

Product Code	L	L1	L2	D	D1	
CNC-AK-32x40	15	5	5	40	32	
CNC-AK-35x45	15	5	5	45	35	
CNC-AK-40x50	15	5	5	50	40	
CNC-AK-45x55	15	5	5	55	45	
CNC-AK-50x60	15	5	5	60	50	
CNC-AK-50x65	15	5	5	65	50	
CNC-AK-55x65	15	5	5	65	55	
CNC-AK-60x70	15	5	5	70	60	
CNC-AK-60x80	15	5	5	80	60	
CNC-AK-63x75	15	5	5	75	63	
CNC-AK-65x80	15	5	5	80	65	
CNC-AK-70x85	15	5	5	80	70	
CNC-AK-75x90	15	5	5	90	75	
CNC-AK-80x95	15	5	5	95	80	
CNC-AK-80x100	15	5	5	100	80	
CNC-AK-85x100	20	9	5	100	85	
CNC-AK-90x105	20	9	5	105	90	
CNC-AK-90x110	20	9	5	105	90	
CNC-AK-100x115	20	9	5	115	100	
CNC-AK-100x120	20	9	5	120	100	
CNC-AK-110x130	20	9	5	130	110	
CNC-AK-115x130	20	9	5	130	115	
CNC-AK-120x140	20	9	5	140	120	
CNC-AK-125x145	20	9	5	145	125	
CNC-AK-125x150	20	9	5	150	125	
CNC-AK-130x150	20	9	5	150	130	
CNC-AK-140x160	20	9	5	160	140	
CNC-AK-150x170	20	9	5	170	150	
CNC-AK-160x190	25	9	5	180	160	
CNC-AK-170x200	25	9	5	200	170	
CNC-AK-180x210	25	9	5	210	180	
CNC-AK-200x245	30	9	5	245	200	
CNC-AK-220x270	30	9	8	270	220	
CNC-AK-230x280	25	9	8	280	230	
CNC-AK-250x300	25	9	8	300	250	



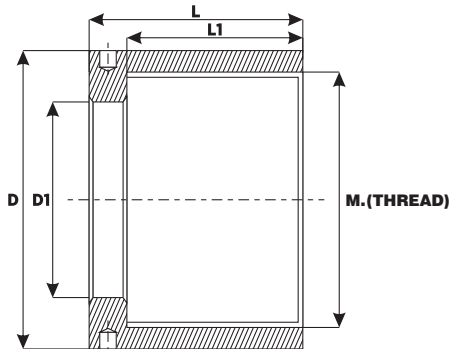
CYLINDER BACK COVER WITH OIL INLET

Product Code	D	D1	D2	L	L1	M	
CNC-AKR-40x50	50	40	21	40	5	1/4"	
CNC-AKR-50x60	60	50	21	40	5	3/8"	
CNC-AKR-60x70	70	60	26	40	5	3/8"	
CNC-AKR-63x75	75	63	26	40	5	3/8"	
CNC-AKR-65x80	80	65	26	40	5	3/8"	
CNC-AKR-70x85	85	70	26	40	5	3/8"	
CNC-AKR-75x90	90	75	30	40	5	3/8"	
CNC-AKR-80x95	95	80	30	40	5	3/8"	
CNC-AKR-80x100	100	80	30	40	5	3/8"	
CNC-AKR-85x100	100	85	30	40	5	3/8"	
CNC-AKR-90x105	105	90	30	40	5	3/8"	
CNC-AKR-90x110	110	90	30	40	5	3/8"	
CNC-AKR-100x115	115	100	30	40	5	1/2"	
CNC-AKR-100x120	120	100	30	40	5	1/2"	
CNC-AKR-110x130	130	110	30	40	5	1/2"	
CNC-AKR-115x130	130	115	40	40	5	1/2"	
CNC-AKR-120x140	140	120	40	40	5	1/2"	
CNC-AKR-125x150	150	125	40	40	5	1/2"	
CNC-AKR-130x150	150	130	40	40	5	1/2"	
CNC-AKR-140x160	160	140	40	40	5	1/2"	
CNC-AKR-150x170	170	140	40	40	5	1/2"	
CNC-AKR-160x180	180	160	40	40	5	1/2"	
CNC-AKR-180x210	210	180	50	40	5	1/2"	
CNC-AKR-200x230	230	200	50	40	5	1/2"	



MOBILE CRANE FASTENING WIPER NUTS (INNER)

Product Code	M	L	D
CNC-IS-140	M148x2,5	50mm	125
CNC-IS-160	M168x3	50mm	130
CNC-IS-180	M188x3	50mm	150
CNC-IS-200	M208x3	50mm	160
CNC-IS-220	M228x3	50mm	180
CNC-IS-230	M238x3	50mm	190
CNC-IS-250	M258x3	50mm	200



MOBILE CRANE FASTENING WIPER NUTS (OUTER)

Product Code	M	L	L1	D	D1
CNC-S-50x60 NUT	M59x2	50mm	40	80	46
CNC-S-50x65 NUT	M64x2	50mm	40	85	46
CNC-S-63x75 NUT	M74x2	60mm	45	95	61
CNC-S-70x85 NUT	M84x2	60mm	45	105	71
CNC-S-80x95 NUT	M94x2	60mm	45	115	76
CNC-S-80x100 NUT	M99x2	70mm	55	120	76
CNC-S-90x105 NUT	M104x2	70mm	55	125	86
CNC-S-90x110 NUT	M109x2	70mm	55	130	86
CNC-S-100x115 NUT	M114x2	70mm	55	135	96
CNC-S-100x120 NUT	M119x2	70mm	55	140	96
CNC-S-110x130 NUT	M129x2	70mm	55	150	106
CNC-S-115x130 NUT	M129x2	70mm	55	150	106
CNC-S-120x140 NUT	M139x2	70mm	55	160	111
CNC-S-125x145 NUT	M144x2	70mm	55	165	116
CNC-S-125x150 NUT	M149x2	70mm	55	170	116
CNC-S-130x150 NUT	M149x2	70mm	55	170	126
CNC-S-140x160 NUT	M159x2	70mm	55	180	131