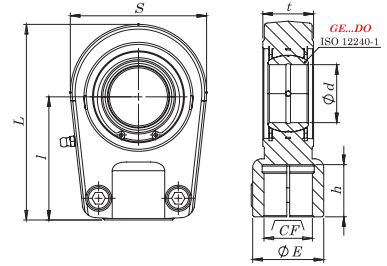




PR...U

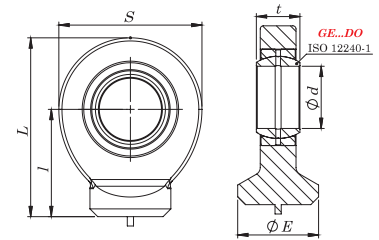
THREADED TYPE ROD JOINTS									
Code	Ød	S	L	I	CF	t	h	ØE	
PR 20 U	20	56	80	50	M16 x 1,5	19	17	25	
PR 25 U	25	56	80	50	M16 x 1,5	23	17	25	
PR 30 U	30	64	94	60	M22 x 1,5	28	23	32	
PR 35 U	35	78	112	70	M28 x 1,5	30	29	40	
PR 40 U	40	94	134	85	M35 x 1,5	35	36	49	
PR 50 U	50	116	168	105	M45 x 1,5	40	46	61	
PR 60 U	60	130	200	130	M58 x 1,5	50	59	75	
PR 70 U	70	157	232	150	M65 x 1,5	55	66	86	
PR 80 U	80	178	265	170	M80 x 2	60	81	105	
PR 90 U	90	210	323	210	M100 x 2	65	101	124	
PR 100 U	100	234	360,7	235	M110 x 2	70	111	138	
PR 110 U	110	270	408,2	265	M120 x 3	80	125	152	



ROUND TYPE ROD JOINTS						
Code	Ød	S	L	I	t	ØE
S 20 C	20	53	65	38	16	28
S 25 C	25	64	77	45	20	34
S 30 C	30	73	88	51	22	40
S 35 C	35	82	102	61	25	47
S 40 C	40	92	115	69	28	52
S 45 C	45	102	128	77	32	58
S 50 C	50	112	144	88	35	62
S 60 C	60	137	168	100	44	70
S 70 C	70	161	195	115	49	80
S 80 C	80	180	231	141	55	95



S...C



RECTANGLE TYPE WELDING ROD JOINTS					
Code	Ød	S	L	I	t
S 20 N	20	50	63	38	19
S 25 N	25	55	73	45	23
S 30 N	30	65	84	51	28
S 35 N	35	83	103	61	30
S 40 N	40	101	119	69	35
S 45 N	45	111	132	77	40
S 50 N	50	123	150	88	40
S 60 N	60	140	170	100	50
S 70 N	70	164	197	115	55
S 80 N	80	180	231	141	60
S 90 N	90	226	263	150	65
S 100 N	100	250	295	170	70



S...N

