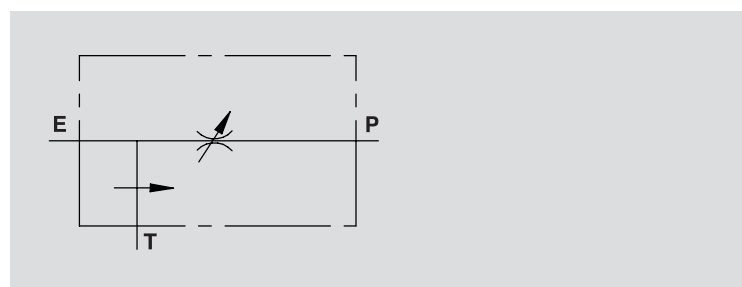


# REGOLATORE DI FLUSSO PRIORITARIO A 3 VIE

## 3 WAY FLOW CONTROL VALVE WITH EXCESS TO TANK

TIPO / TYPE  
**RFP3**

SCHEMA IDRAULICO  
HYDRAULIC DIAGRAM



### IMPIEGO:

Valvola che consente di mantenere costante la portata in P ad un valore stabilito, indipendentemente dalla pressione richiesta e dalla portata in entrata alla valvola. La portata in eccesso viene mandata direttamente allo scarico T (serbatoio).

### MATERIALI E CARATTERISTICHE:

Corpo: acciaio zincato.  
Componenti interni: acciaio temprato termicamente e rettificato.  
Guarnizioni: BUNA N standard.  
Tenuta: per accoppiamento. Trafilamento minimo (poche gocce al minuto).

### MONTAGGIO:

Collegare E all'alimentazione e P alla rete in cui si necessita la regolazione della portata. Collegare T al serbatoio. Per regolare la portata in entrata avvitare o svitare il volantino previo allentamento della ghiera di fermo.

### A RICHIESTA:

Per versioni 3/8" e 1/2" pomolo a tenuta (CODICE/P).

### DIAGRAMMA COMPENSAZIONE COMPENSATION CURVE

### USE AND OPERATION:

This valve enables to keep the flow to P constant to a required setting, independent of pressure or inlet flow. Excess flow is drained to T (tank).

### MATERIALS AND FEATURES:

Body: zinc-plated steel.  
Internal parts: hardened and ground steel.  
Seal: BUNA N standard.  
Load holding: matched diameters, minimal leakage (few drops per minute).

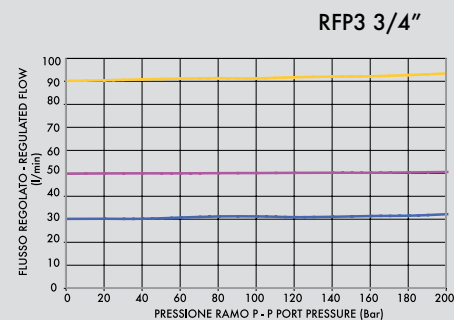
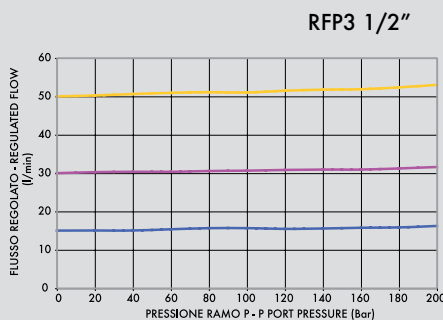
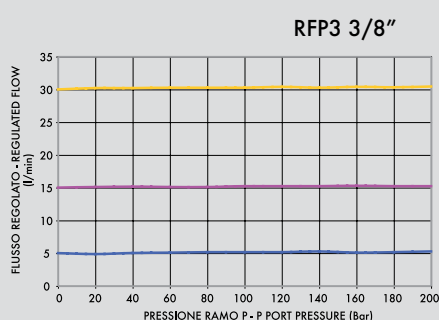
### CONNECTIONS:

Connect E to the supply and P to the actuator or to a line of a hydraulic circuit where flow control is needed. Connect T to the tank. To adjust flow setting rotate the hand knob after loosening the locking nut.

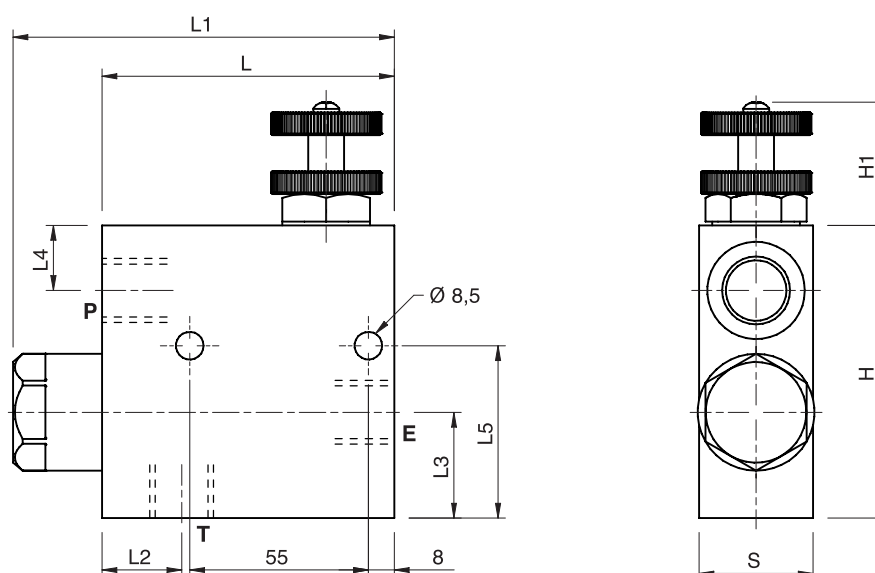
### ON REQUEST:

For 3/8" e 1/2" versions water proof adjustment knob (CODE/P).

Temperatura olio: 50°C - Viscosità olio: 30 cSt  
Oil temperature: 50°C - Oil viscosity: 30 cSt



CODICE CODE	SIGLA TYPE	PORTATA MAX ENTRANTE MAX INLET FLOW Lt. / min	PORTATA MAX REGOLATA MAX ADJUSTED FLOW Lt. / min	PRESSIONE MAX MAX PRESSURE Bar
<b>V1110</b>	RFP3 3/8"	60	50	350
<b>V1120</b>	RFP3 1/2"	80	60	350
<b>V1130</b>	RFP3 3/4"	120	100	350



CODICE CODE	SIGLA TYPE	E - P . T GAS	L mm	L1 mm	L2 mm	L3 mm	L4 mm	L5 mm	H mm	H1 mm	S mm	PESO WEIGHT kg
<b>V1110</b>	RPF3 3/8"	G3/8"	90	118	25	32	20	53	90	40	35	2,170
<b>V1120</b>	RPF3 1/2"	G1/2"	90	118	25	32	20	53	90	40	35	2,096
<b>V1130</b>	RPF3 3/4"	G3/4"	90	122	27	36	19	62	102	40	50	3,344