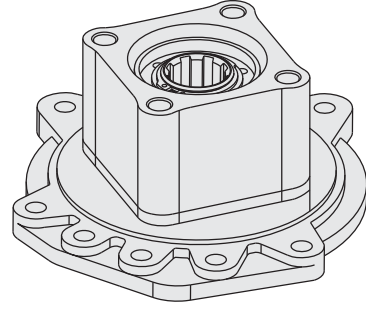
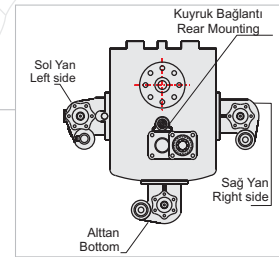
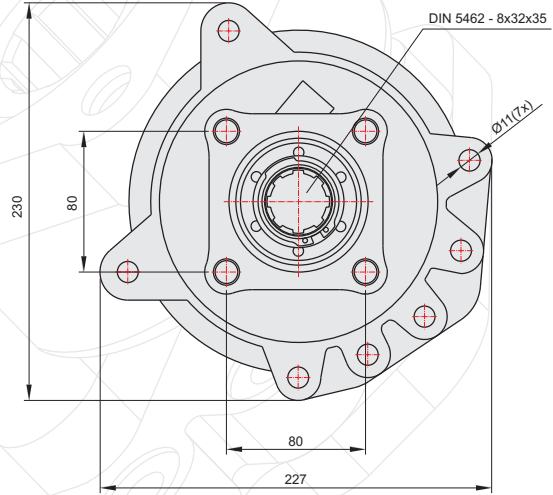
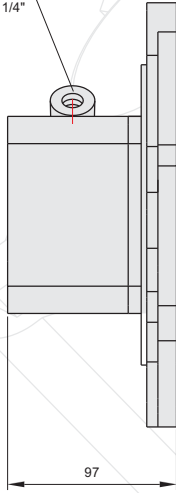


50128322



AIR INLET R 1/4"  
HAVA GİRİŞİ R 1/4"



## GENEL BİLGİLER/GENERAL DATA

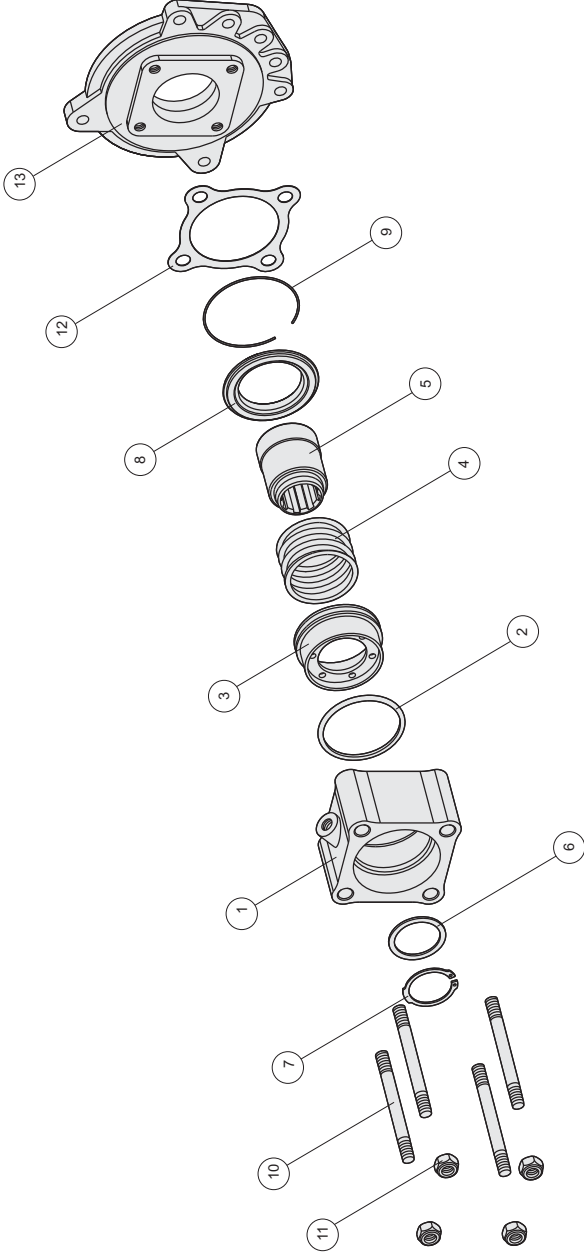
P.T.O. KODU / P.T.O. CODE	50128322	
Tork / Torque	23,5 Kgm	230,5 Nm
Güç(1000 rpm) / Power	16 Hp	12 Kw
Devir / Speed	500 rpm	500 rpm
Oran / Ratio	1/1	1/1
Ağırlık / Weight	12 kg	26,5 lb
Bağlantı / Mounting	Kuyruk	Rear
Kumanda / Control	Havali	Pneumatic
Dönüş / P.T.O. Rotation	Sağ - ISO	Right - ISO

Ana Şanzıman / Gearbox	Kullanılan Bazı Araçlar / Used Vehicles
G4-GV/ 4 65,90,95,110,125,135,155,180	1222-1224-1417-1419-1617-1619-1620-1722-1733-1817-1820-1821-1827-1831-1922-2232-2517-2521-2527-3027-1424-1628-1820-1824-1929-1935-1948-2224-2222-2426-2524-2622-2629-2635-MERCEDES BENZ

Seçeğiniz pompanın dönüş yönü, P.T.O. dönüş yönü ile ters olmalıdır.  
The rotation of the chosen pump has to be opposite with the rotation of P.T.O.

P.T.O. montaj edildikten sonra ana şanzıman yağını tamamlayın.  
Fill the oil of the gear box after mounting the P.T.O.

ÜRÜN MONTAJ ve PARÇA LİSTESİ  
PRODUCT ASSEMBLY and PART LIST



MERCEDES G4

Adet	Parça No	Parça Adı	Kod
1	1	Zf1 Gövde	50128322-01
1	2	69,22x5,33 X-ring	50128322-02
1	3	Zf1 Piston	50128322-03
1	4	Zf1 Yay	50128322-04
1	5	Zf Kavrama-40	50128322-05
1	6	42x52x2 Pul	50128322-06
1	7	471-42 Segman	50128322-07
1	8	Zf1 Ortalayıcı pul	50128322-08
1	9	1.70 Tei Segman	50128322-09
4	10	M12x120 Saplama	50128322-10
4	11	M12 Somun	50128322-11
1	12	Zf1 Conta	50128322-12
1	13	G4 Plate	50128322-13
19	TOPLAM PARÇA SAYISI		