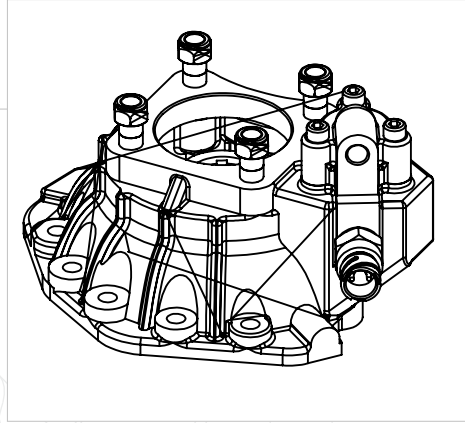
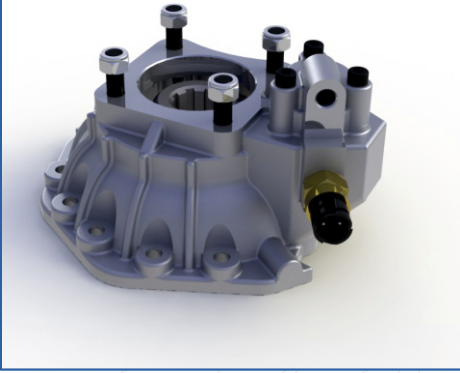
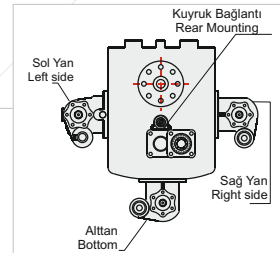
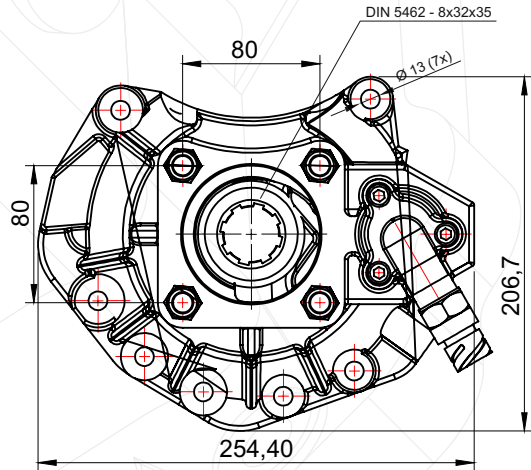
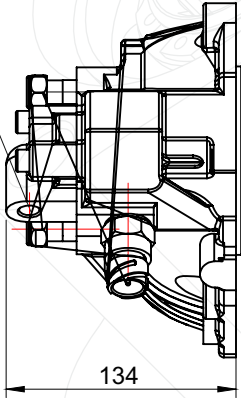


MERCEDES / G155-1 AL. ISO

50125322P1



AIR INLET R 1/4"
HAVA GİRİŞİ R 1/4"



GENEL BİLGİLER/GENERAL DATA

P.T.O. KODU / P.T.O. CODE	50125322P1	
Tork / Torque	23 Kgm	255 Nm
Güç(1000 rpm) / Power	16 Hp	12 Kw
Devir / Speed	500 rpm	500 rpm
Oran / Ratio	1/1	1/1
Ağırlık / Weight	4,9 kg	10,8 lb
Bağlantı / Mounting	Kuyruk	Rear
Kumanda / Control	Havalı	Pneumatic
Dönüş / P.T.O. Rotation	Sağ - ISO	Right - ISO

Ana Şanzıman / Gearbox	Kullanılan Bazı Araçlar / Used Vehicles
G125,135,155,180,200,210,221 ,240,255,260 (500 rpm, SAĞ)	1729-1735-1827-1831-1834-1835-1838- 1840-1844-1848-1850-1857-1929-1934 -1935-1938-1953-2031-2038-2040-2044 -2050-2429-2435-2527-2531-2534-2544- 2550-2629-2631-2635-2638-2643-2644- 2648-2650-3031-3229-3234-3235-3331- 3335-3336-3340-3348-3534-3535-3538- 3548-3553-3557- 4148- ACTROS MERCEDES

Seçeğinizin pompanın dönüş yönü, P.T.O. dönüş yönü ile ters olmalıdır.
The rotation of the chosen pump has to be opposite with the rotation of P.T.O.

P.T.O. montaj edildikten sonra ana şanzıman yağını tamamlayın.
Fill the oil of the gear box after mounting the P.T.O.