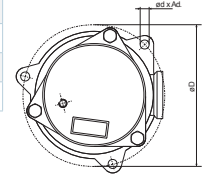
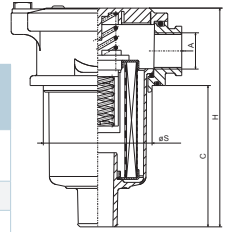




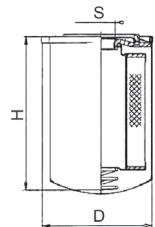
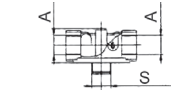
OMTF SERIES LINE TYPE RETURN FILTERS

CODE	A (Dim)	C (mm)	H (mm)	D (mm)	S (mm)	Ød x Ad. (mm)	MAX. PRES. (bar)	MAX.FLOW (lt/min)	FILTRATION (micron)
OMTF 091 C25 NA	1/2"	85	132	66	66	Ø7 x 3	3	40	25
OMTF 111 C25 NA 1	3/4"	92	155	88	86	Ø9 x 3	3	81	25
OMTF 112 C25 NA 2	1"	150	213	88	86	Ø9 x 3	3	100	25
OMTF 171 C25 NA 1	1 1/4"	244	323	175	129	Ø11 x 3	3	214	25
OMTF 222 C25 NA 1	1 1/2"	176	262	220	173	Ø11 x 4	3	350	25
OMTF 224 C25 NA 2	2"	236	322	220	173	Ø11 x 4	3	500	25



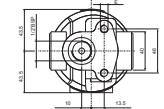
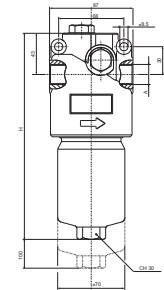
OMTI SERIES LINE TYPE ATOMIC FILTERS

CODE	A (Dim)	D (mm)	S (mm)	H (mm)	MAX.FLOW (lt/min)
FTT 05	3/4"	98	3/4"	145	95
FTT 06				190	110
FTT 10	1 1/4"	132	1 1/4"	180	240
FTT 15				226	260



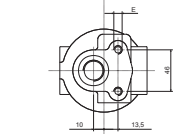
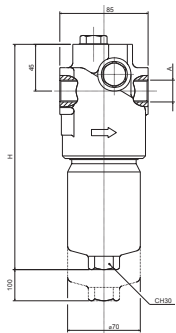
HMM SERIES PRESSURE FILTERS (WITH BY-PASS)

CODE	FILTRATION (Micron)	MAX.FLOW (lt/dk)	W. PRESSURE (bar)	BY-PASS (bar)	A (mm)	I (mm)	M (mm)	G-E (mm)	H (mm)
HMM281F10XNR	F10	35	220	6	1/2	-	-	M 8	187
HMM282F10XNR		55			1/2	-	-		214
HMM283F10XNR1		70			3/4	47,6	22,5	M 10	214
HMM421F10XNR		80			3/4	47,6	22,5		230
HMM422F10XNR1		135			1"	52,4	26,2		341



HPM SERIES PRESSURE FILTERS

CODE	FILTRATION (Micron)	MAX.FLOW (lt/min)	W. PRESSURE (bar)	BY-PASS (bar)	A (mm)	I SAE 3000 - 6000 (mm)	M SAE 3000 - 6000 (mm)	G-E (mm)	H (mm)
HPM281F10XNR	F10	35	20	20	1/2	-	-	M 8	189
HPM282F10XNR		55			1/2	-	-		214
HPM283F10XNR1		70			3/4	47,6	22,5	M 10	310
HPM421F10XNR		80			3/4	47,6	22,5		230
HPM422F10XNR1		135			1"	52,4	26,2		341
HPM621F10XNR		145			1"	52,4	26,2	M 12	273
HPM622F10XNR1		300			1" 1/4	58,7 - 66,7	30,2 - 31,6		393
HPM623F10XNR1		330			1" 1/4	58,7 - 66,7	30,2 - 31,6		533
HPM624F10XNR2		360			1" 1/2	70	35,7		673



RETURN FILTER EQUIPMENTS

CODE	DIMENSION	TYPE	FILTRATION (micron)
OMTF CR091C10R	1/2"	PAPER	10
OMTF CR111C10R	3/4"		
OMTF CR112C10R	1"		
OMTF CR171C10R	1 1/4"		
OMTF CR091C25R	1/2"		
OMTF CR111C25R	3/4"		
OMTF CR112C25R	1"		
OMTF CR171C25R	1 1/4"		
OMTF CR222C25R	1 1/2"		
OMTF CR224C25R	2"		
OMTF CR111R60R	3/4"	METAL	60
OMTF CR112R60R	1"	FIBER	25
OMTF CR112F25R	1"		
OMTF CR171F25R	1 1/4"		
OMTF CR222F25R	1 1/2"		
OMTF CR224F25R	2"		
OMTF CR222F06R	1/2"		6
OMTF CR112F06R	1"		60
OMTF CR171F06R	1 1/4"		
OMTF CR224F06R	2"		

PRESSURED FILTER EQUIPMENTS

CODE	DIMENSION	TYPE	FILTRATION (micron)
CHP281F03XN	1/2"	FIBER	3
CHP421F03XN	3/4"		
CHP422F03XN	1"		
CHP281F06XN	1/2"		
CHP421F06XN	3/4"		
CHP422F06XN	1"		6
CHP621F06XN	1"		
CHP622F06XN	1 1/4"		
CHP624F06XN	1 1/2"		
CHP281F10XN	1/2"		
CHP282F10XN	1/2"		10
CHP283F10XN	3/4"		
CHP281F25XN	1/2"		
CHP421F10XN	3/4"		
CHP422F10XN	1"		
CHP621F10XN	1"		
CHP622F10XN	1 1/4"		
CHP624F10XN	1 1/2"		

ATOMIC FILTER EQUIPMENTS

CODE	DIMENSION	TYPE	FILTRATION (micron)	
CS05AN	3/4"	PAPER	10	
CS05BN			25	
CS05CN		METAL	60	
CS05EN			125	
CS05FN		FIBER	3	
CS05GN			10	
CS05HN			25	
CS05NN			6	
CS10AN		1 1/4"	PAPER	10
CS10BN				25
CS10CN	METAL		60	
CS10EN			125	
CS10FN	FIBER		3	
CS10GN			10	
CS10HN			25	
CS10NN			6	
CS15AN	1 1/4"		PAPER	10
CS15BN				25
CS15CN		METAL	60	
CS15EN			125	
CS15FN		FIBER	3	
CS15GN			10	
CS15HN			25	
CS15NN			6	

ATOMIC FILTER PAD

CODE	DIMENSION
T05V0A	3/4" - SINGLE
T10V0A	1 1/4" - SINGLE
T20V0A	1 1/2" - ONE AFTER ANOTHER
T31V0A	SAE-SIDE BY SIDE
T05V0R	3/4" - CHECK VALVE - SINGLE
T10V0R	1 1/4" - CHECK VALVE - SINGLE
T20V0R	1 1/2" - CHECK VALVE - ONE AFTER ANOTHER
T31V0R	SAE-CHECK VALVE - SIDE BY SIDE



SUCTION FILTERS						
CODE	A	B	ØD	K	L	
EF15	1"	42	61	68	78	
EF 25	1"	42	61	104	114	
EF 45	1"	42	61	150	160	
EF 65	1-1/2"	59	82	127	131	
EF 90	1-1/2"	59	82	164	174	
EF 125	1-1/2"	59	82	209	219	
EF 180	1-1/2"	76	82	248	258	
EF 225	2-1/2"	81	130	162	172	
EF 300	2-1/2"	81	130	198	208	
EF 500	2-1/2"	81	130	253	263	
EF 750	3 - 4	106	180	247	263	
EF 1400	3 - 4	106	180	496	512	

