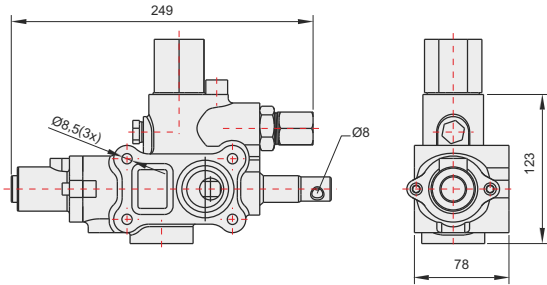
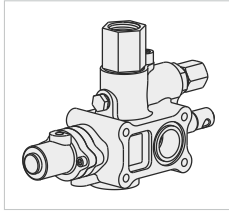


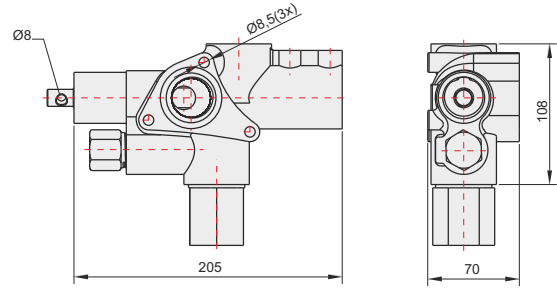
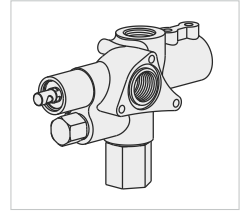
## AÇIK DEVRE YÖN VENTİLİ-4B OPEN LOOP DIRECTIONAL VALVE-4B

## AÇIK DEVRE YÖN VENTİLİ-3B OPEN LOOP DIRECTIONAL VALVE-3B

36001030 / 36001031



36001060



### GENEL BİLGİLER/GENERAL DATA

VENTİL KODU VALVE CODE	1" Rakorlu 1" Fitting 36001030	1" Tank Tipi 1" Tank Type 36001031
Debi Hızı / Flow Rate	110 lt/dk	110 lt/dk
Max. Basınç / Max. Press.	190 bar	190 bar
Çal. Basıncı / Working Press.	170 bar	170 bar
Ağırlık / Weight(kg)	5,5 kg	5,5 kg
Max. Pnömatik Basınç Max. Pneumatic Press.	12 bar	12 bar
Akışkan / Fluid	Mineral bazlı hidrolik yağ Mineral based hydraulic oil	

### GENEL BİLGİLER/GENERAL DATA

VENTİL KODU VALVE CODE	1" Rakorlu 1" Fitting 36001060
Debi Hızı / Flow Rate	110 lt/dk
Max. Basınç / Max. Press.	190 bar
Çal. Basıncı / Working Press.	170 bar
Ağırlık / Weight(kg)	3,8 kg
Max. Pnömatik Basınç Max. Pneumatic Press.	12 bar
Akışkan / Fluid	Mineral bazlı hidrolik yağ Mineral based hydraulic oil

