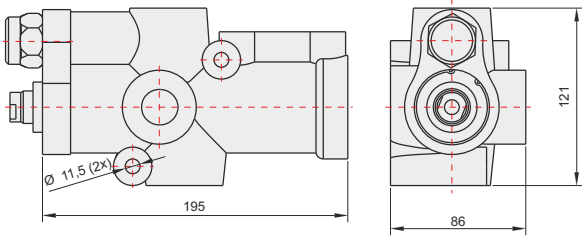
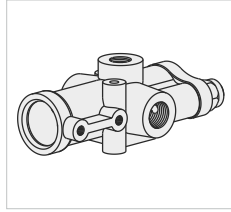


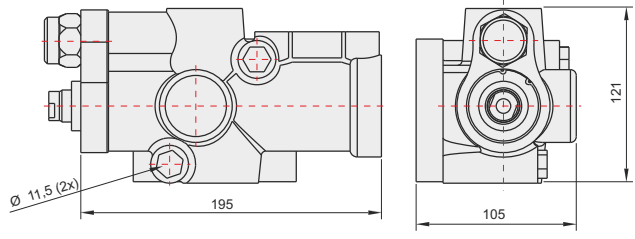
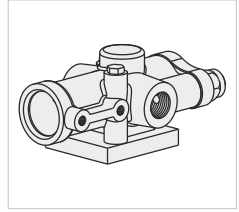
## YÖN VETİLİ DIRECTIONAL VALVE

## TANK YÖN VETİLİ DIRECTIONAL TANK VALVE

36001010 / 36001011  
36001012



36001020 / 36001021  
36001022



### GENEL BİLGİLER/GENERAL DATA

VENTİL KODU VALVE CODE	3/4"Rakorlu 3/4"Fitting 36001010	1"Düz Rakorlu 1"Straight Fitting 36001011	1"Ters Rakorlu 1"Reverse Fitting 36001012
Debi Hızı / Flow Rate	110 lt/dk	140 lt/dk	140 lt/dk
Max. Basınç / Max. Press	190 bar	190 bar	190 bar
Çal. Basıncı / Working Press	170 bar	170 bar	170 bar
Ağırlık / Weight(kg)	6 kg	6 kg	6 kg
Max. Pnömatik Basınç Max. Pneumatic Press	12 bar	12 bar	12 bar
Akışkan / Fluid	Mineral bazlı hidrolik yağ / Mineral based hydraulic oil		

### GENEL BİLGİLER/GENERAL DATA

VENTİL KODU VALVE CODE	3/4"Rakorlu 3/4"Fitting 36001020	1"Düz Rakorlu 1"Straight Fitting 36001021	1"Ters Rakorlu 1"Reverse Fitting 36001022
Debi Hızı / Flow Rate	110 lt/dk	140 lt/dk	140 lt/dk
Max. Basınç / Max. Press	190 bar	190 bar	190 bar
Çal. Basıncı / Working Press	170 bar	170 bar	170 bar
Ağırlık / Weight(kg)	7,5 kg	7,5 kg	7,5 kg
Max. Pnömatik Basınç Max. Pneumatic Press	12 bar	12 bar	12 bar
Akışkan / Fluid	Mineral bazlı hidrolik yağ / Mineral based hydraulic oil		

