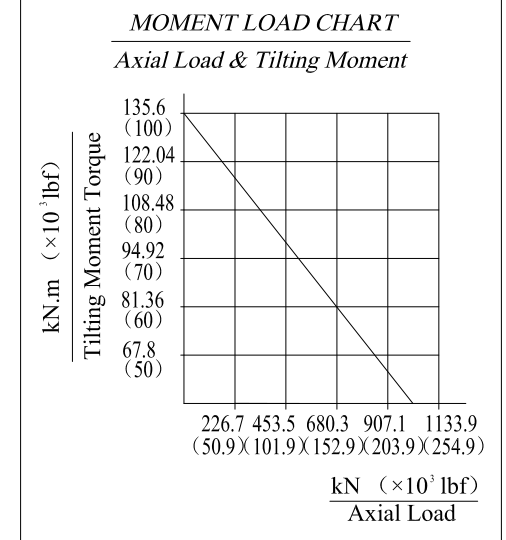




Note: Side A facing up when mounted.

Slewing Drive Performance Data		
Rated Output Speed	< 2.5 rpm	
Output Torque (Max.)	10 kN.m	7400 lbf.ft
Tilting Moment Torque (Max.)	135.6 kN.m	100× 10 ³ lbf.ft
Holding Torque	72.3 kN.m	53× 10 ³ lbf.ft
Axial Load (Max.)	970 kN	218× 10 ³ lbf
Radial Load (Max.)	390 kN	88× 10 ³ lbf
Ratio of Worm Gear	102:1	
Tracking Precision	≤ 0.15 °	



REV	DATE	REVISER	DESCRIPTION			
DESIGNED BY		04/06/2017	 MOBILE AND INDUSTRIAL HYDRAULIC			
CHECKED BY		04/06/2017				
APPROVED BY		04/06/2017				
ALL PROPRIETARY RIGHTS IN THE SUBJECT MATTER HERE OF ARE RESERVED, AND NO PERMISSION IS GRANTED OR TO DISCLOSE REPRODUCE THIS PRINT IN WHOLE OR IN PART, ANY OF THE INFORMATION TO OTHERS.			WEIGHT	SCALE	Title	SLEW DRIVE
			SIZE	1:4	Model No.	CNC-SE17A-102-25H-R
SYMBOLE ISO		SHEET	1 / 1	Part No.		