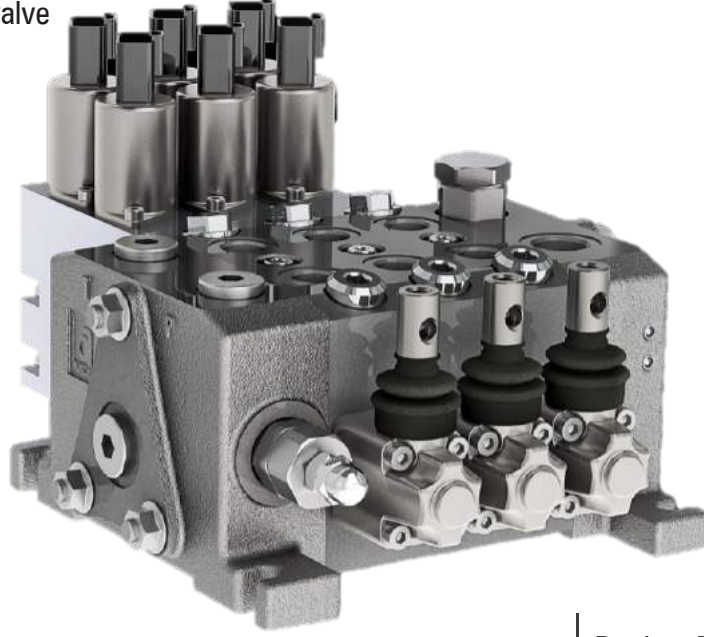


# CNC S50

sectional directional control valve  
*dilimli hidrolik yön kontrol valfi*



## Index - İçindekiler

Product Features

*Ürün Özellikleri*

General Specifications

*Genel Özellikler*

Order Coding

*Sipariş Kodlama*

Dimensional Data

*Ölçüsel Bilgi*

Performance Data

*Performans Eğrileri*

Hydraulic Specification

*Hidrolik Devre*

Inlet Options

*Basınç (P) Hattı Opsiyonları*

Working Section

*Dilim*

Spool Positioners

*Sürgü Kontrolleri*

Spool Options

*Sürgü Tipleri*

Auxiliary Valves

*Yardımcı Valfler*

Lever Types

*Sap Tipleri*

Outlet Options

*Tank (T) Hattı Opsiyonları*

# General Specifications

## Genel Özellikler

### Product Features

S50 is compact and symmetric open center directional control valve with 1-10 sections in 3/8" BSP threads. Having nominal flow of 50 l/min and maximum operating pressure 315 bar.

### Accessories

Valve is equipped with an adjustable main relief valve  
Available in parallel (in standard), series, tandem circuit  
Load Hold Check valves in each section  
Auxiliary Valves  
Wide range of spool options  
Interchangeable Ø13 mm Spools  
Carry-over and closed center option  
Load Sense Option

### Controls

Manual, Pneumatic, Electro-Pneumatic, Hydraulic, Electro-Hydraulic, Inlet proportional, Electro-Hydraulic Proportional, Mechanical Joystick and Remote Cable Control

### Özellikler

S50 Serisi, 50lt/dk ve 315 bar çalışma basıncına kadar maksimum performansı gösteren açık merkez kontrol kumandasıdır.

### Aksesuarlar

Ayarlanabilir Ana Emniyet Valfi  
Paralel, Seri, Tandem Devre İmkanı  
Her Dilimde Yük Tutma Valfleri  
Yardımcı Valfler  
Çeşitli Sürgü Tipleri  
Değiştirilebilir Ø13 mm Sürgüler  
Carry-over ve Kapalı Merkez İmkanı  
LS Opsiyonu

### Kontrol

Manuel, Pnömatik, Elektro-Pnömatik, Hidrolik, Elektro-Hidrolik, Elektro-Hidrolik Oransal, Giriş Oransal, Mekanik Joystick, Halat Kontrol

## Standard Material Specifications Standard Malzeme Özellikleri

High Resistance Cast Iron Body *Döküm Gövde*  
Hard Chromium Plated Interchangeable Spools *Sertleştirilmiş Krom Kaplama Sürgüler*  
Steel spring caps *Çelik Yay Kapakları*  
Aluminium Lever Caps *Alüminyum Sap Kapakları*  
NBR Seals *NBR Sızdırmazlık Elemanları*

### Working Conditions Çalışma Şartları

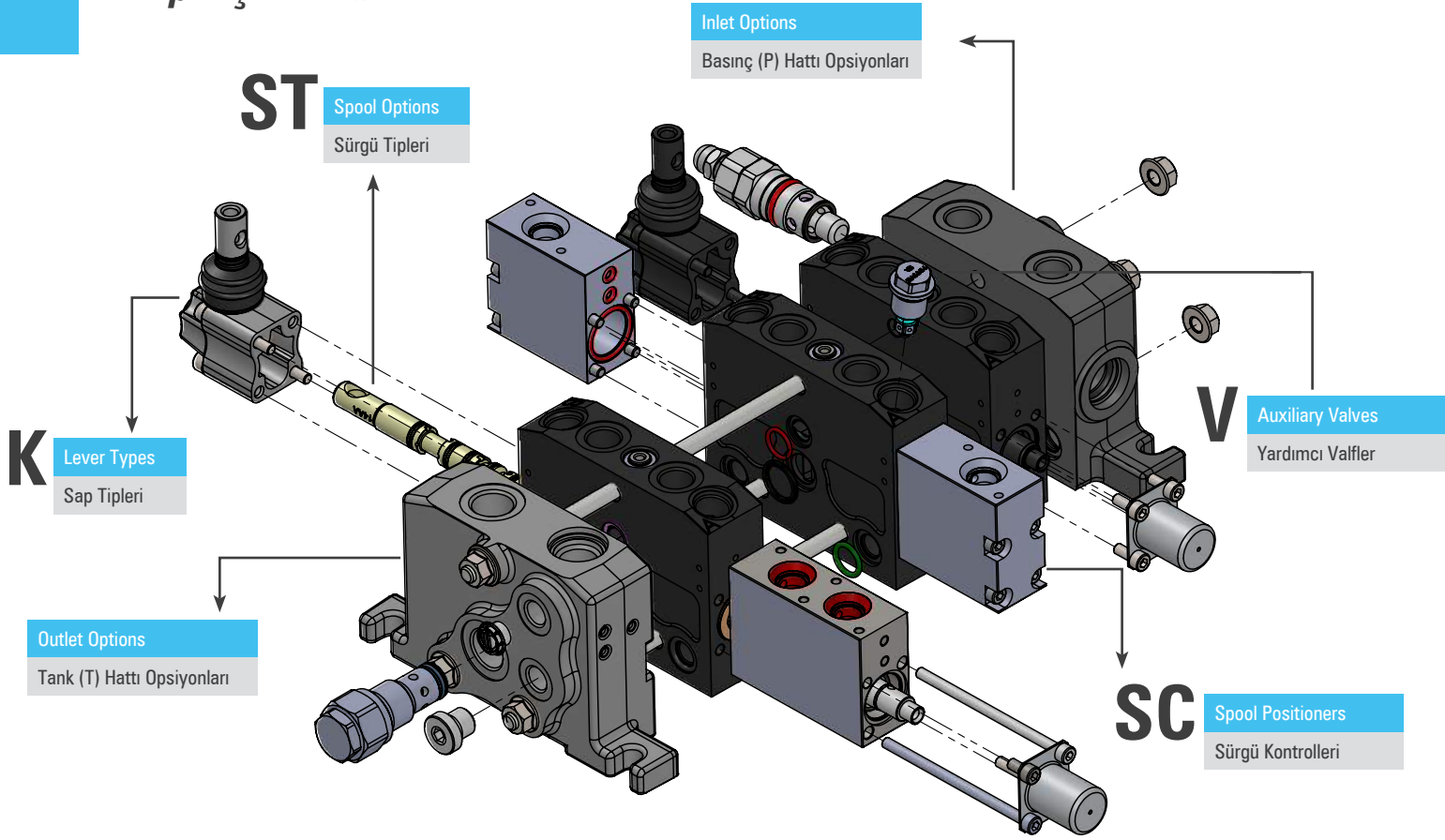
Recommended Oil Viscosity Range <i>Önerilen Yağ Viskozite Aralığı</i>	10 cSt to 75 cSt
Recommended Oil Filtering <i>Önerilen Yağ Filtrasyonu</i>	β 10 ≥ 75
Recommended Fluid Temperature Range <i>Önerilen Çalışma Sıcaklığı (°C)</i>	-20 to +80
Environmental Temperature Range <i>Önerilen Ortam Sıcaklığı (°C)</i>	-35 to +60
Maximum Contamination Level <i>Maksimum Kirlilik Seviyesi</i>	Class 10 (NAS 1638) 19/16 (ISO 4406)

### Technical Specifications Teknik Özellikler

Nominal Flow <i>Debi</i>	50 lpm	13 US gpm
Number of Spools <i>Dilim Sayısı</i>	1 - 9	
Maximum Working Pressure <i>Maksimum Çalışma Basıncı</i>	315 bar 250 bar in Series Circuit	4650 psi 3600 psi in Series Circuit
Maximum Back Pressure <i>Maksimum Tank Hattı Basıncı</i>	30 bar	430 psi
Internal Leakage <i>İç Kaçak Değeri</i>	4 cc - 9 cc (100 Bar; 32 cSt, 40 °C)	0,24 - 0,54 in <sup>3</sup> /m (1450 psi; 32 cSt, 104°F)

# Order Coding

## Sipariş Kodlama



**CNC S52 - IL-005(180)-B01 / - A SC1 ST11 V13 K1 / A SC15 ST1 V13 / B - H**

1

2

3

4

1

### Valve Type Valf Tipi

**S50** Valve Series Valf Serisi  
**2** Number of Spools Sürgü Sayısı

2

### Inlet Options Pompa (P) Hattı Opsiyonları

**IL** Side of Inlet Section Basınç Kapağı Yönü  
**005** Configuration of Inlet Section Basınç Kapağı Konfigürasyonu  
**180** Pressure Setting Basınç Değeri  
**B01** Inlet Position and Port Thread Basınç Kapağı Konfigürasyonu

3

### Working Section Dilim

**A** Port Thread Port ölçüleri  
**SC1** Spool Positioners Sürgü Kontrol  
**ST11** Spool Options Sürgü Tipleri  
**V13** Auxiliary Valves Yardımcı Valfler  
**K1** Lever Types Sap Tipleri

4

### Outlet Options Tank (T) Hattı Opsiyonları

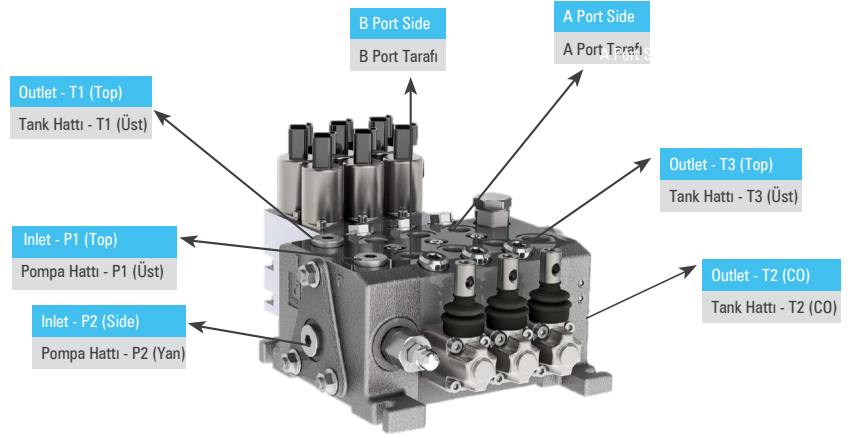
**B** Port Thread Port ölçüleri  
**H** Outlet Options Tank Hattı Opsiyonları

This part must be coded separately for each working section. If adjacent sections are identical then code the first section and put number of identical sections with a cross. Example for 3 identical sections; CNC S4/IL-005(180)-B01/ASC1ST1V7(A160B160)K1/3XASC4ST1V13K3/B-H

Bu bölümdeki kodlama her dilim için ayrı ayrı yapılmalıdır. Eğer birbirini takip eden ve aynı konfigürasyona sahip dilim isteniyorsa, aynı dilimler, dilim sayısı başa getirilip yanına çarpı konacak şekilde kodlanabilir. Örnek Kodlama; CNC S4/IL-005(180)-B01/ASC1ST1V7(A160B160)K1/3XASC4ST1V13K3/B-H

# Dimensional Data

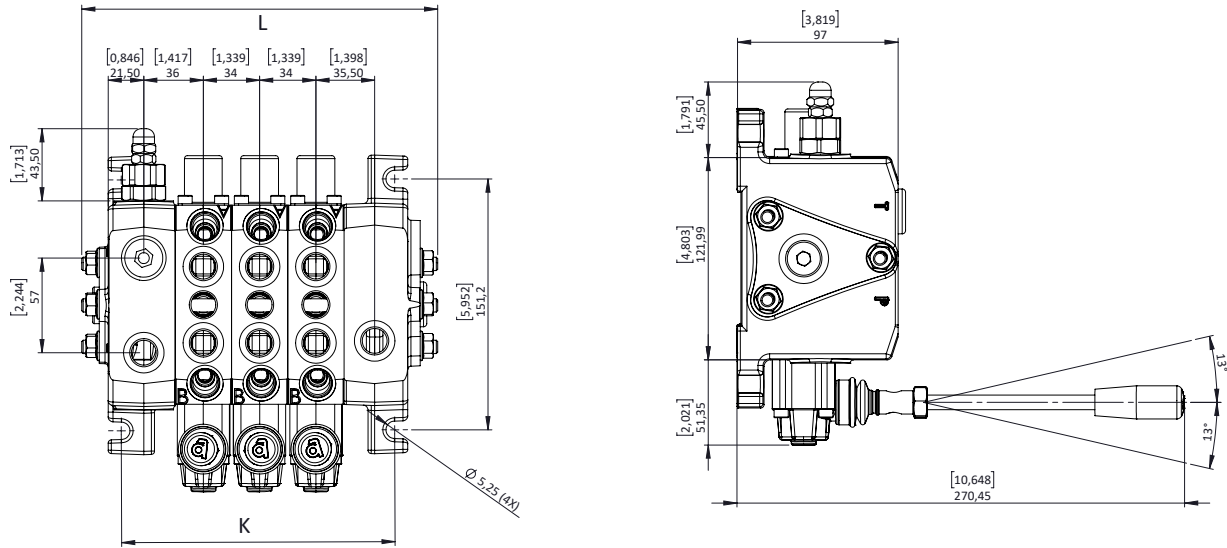
## Ölçüsel Bilgi



### Standard & Optional Threads Standart ve Opsiyonel Ölçüler

Thread Paso Tipi	Code Kod	P1 - P2 - T1	A/B	T3	T2(CO)
BSP(Standard)	A	G 1/2"	G 3/8"	G 1/2"	G 1/2"
UN-UNF	L	3/4 - 16 (SAE 8)	3/4 - 16 (SAE 8)	7/8 - 14 (SAE 10)	G 1/2"
	M	7/8 - 14 (SAE 10)	3/4 - 16 (SAE 8)	7/8 - 14 (SAE 10)	G 1/2"
METRIC	U	M22x1,5	M18x1,5	M22x1,5	G 1/2"

BSP threads are standard threads. Its necessary to code the port thread in inlet, working and outlet section. Example coding; CNC S1/IL-005(180)-B01/ASC1ST1V13/B-H  
Valflerimiz standart olarak BSP Diş üretilmektedir. Talep edilen port ölçüleri basınç kapağında, her dilimim başında ve dönüş kapağında kodlanır. Örnek Kodlama; S1/IL-005(180)-B01/ASC1ST1V13/B-H



### Dimensions & Weight Ölçüler ve Ağırlık

Type / Tip	K		L		Weight Ağırlık	
	mm	inc	mm	inc	kg	lb
CNC S51	96,7	3.81	147	5.79	8.92	19.66
CNC S52	130,7	5.14	181	7.12	11.11	24.49
CNC S53	164,7	6.48	215	8.46	13.30	29.32
CNC S54	199,7	7.84	249	9.80	15.50	34.17
CNC S55	233,7	9.18	283	11.14	17.70	39.02
CNC S56	267,7	10.52	317	12.48	19.80	43.85
CNC S57	301,7	11.87	351	13.82	22.08	48.68
CNC S58	335,7	13.13	385	15.16	24.27	53.51
CNC S59	369,7	14.55	419	16.50	26.46	58.33

Given weights are for standard configurations.  
Ağırlıklar standart konfigürasyon için verilmiştir.

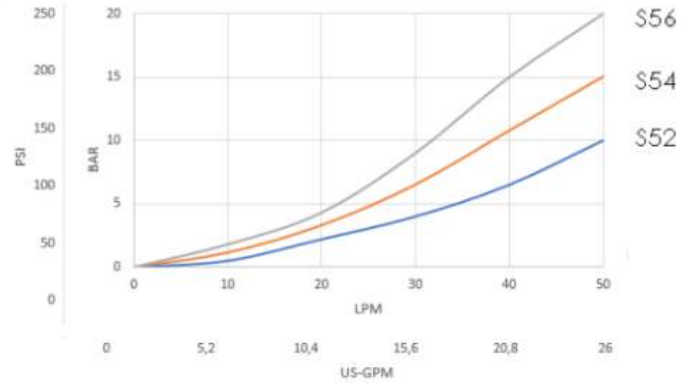
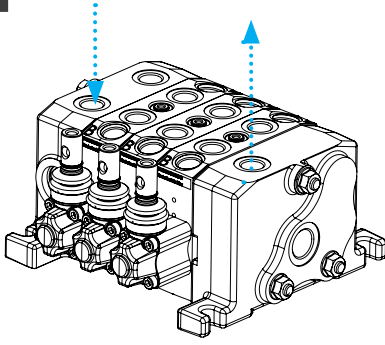


# Performance Data

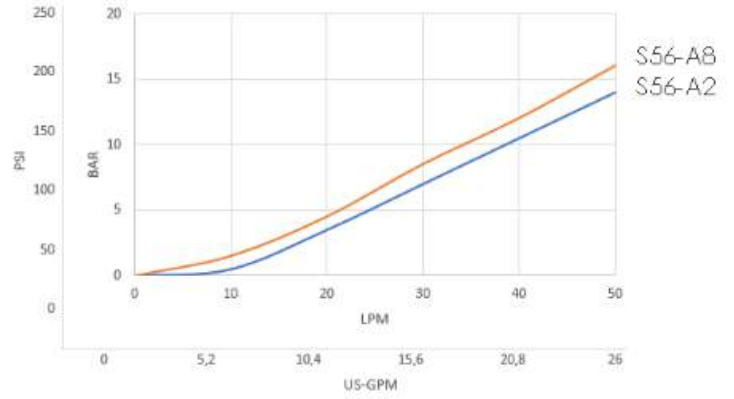
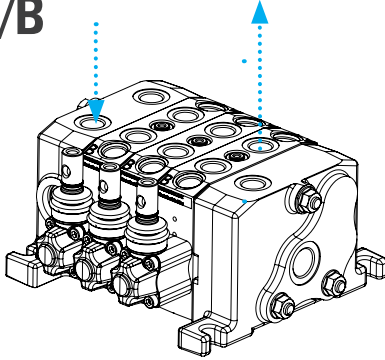
## Performans Eğrileri

### Pressure Drop Curves Basınç Kayıp Eğrileri

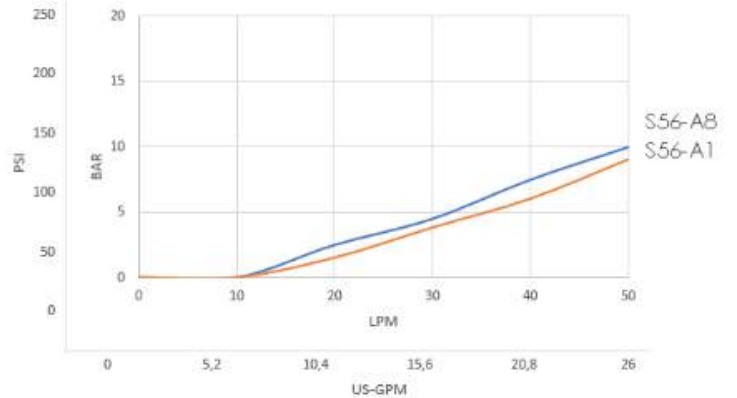
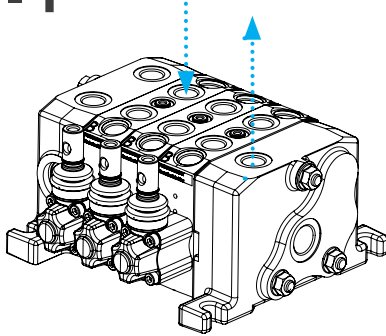
#### P - T



#### P - A/B



#### A/B - T



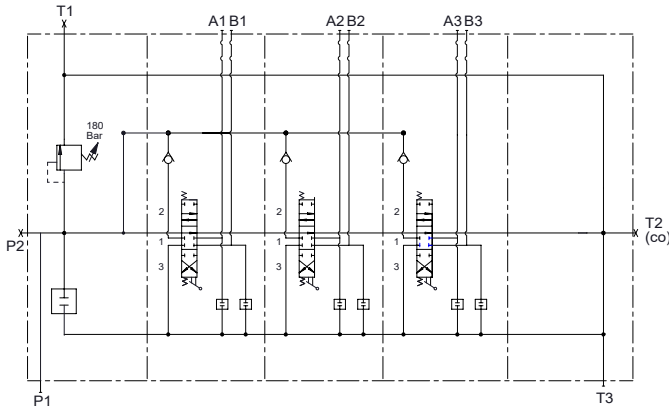
Measured with spool type ST1 and 32 cSt hydraulic oil @ 40°C.  
ST1 sürgü ve 32 cSt hidrolik yağ ile 40°C'de ölçülmüştür.

# Hydraulic Specifications

## Hidrolik Devre

### Parallel Circuit Paralel Devre

Standard configuration; Parallel circuit with upper inlet and outlet.  
Standart konfigürasyon; Paralel devre, P1 ve T3 açık, P2, T1 ve T(CO) kör şeklindedir.

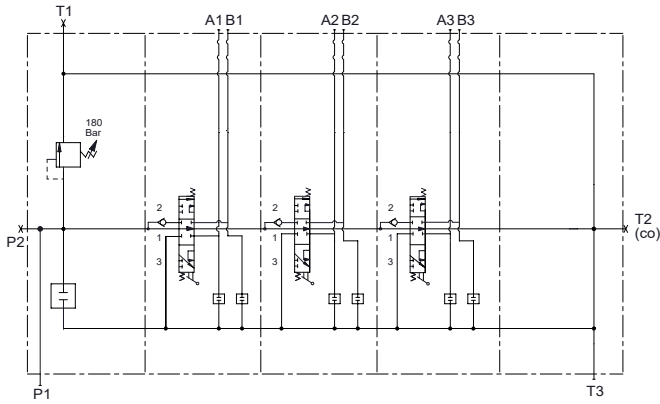


Code / Kod

**NO  
CODE**

Parallel circuit is standard configuration.  
No need for coding.  
Standart üretimimiz paralel devredir.  
Ek bir kodlamaya gerek yoktur.

### Series Circuit Seri Devre



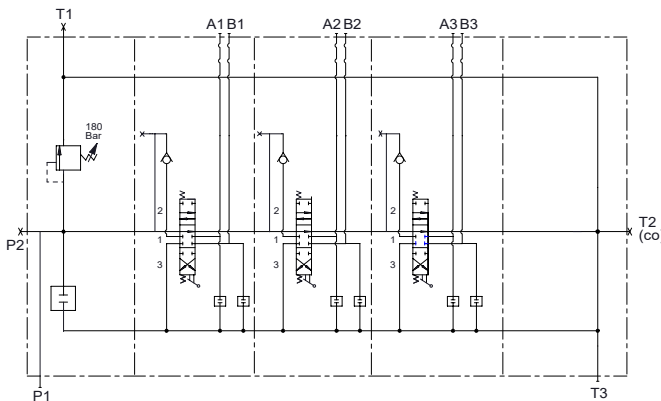
Code / Kod

**S**

Series Circuit is coded with «S» before each series working section demanded.  
Example Coding: CNC S52/IL-005(180)-B01/SASC1ST1V13/SASC1ST1V13/B Seri devre her seri dilimin önüne «S» gelecek şekilde kodlanır.  
Örnek Kodlama: CNC S52/IL-005(180)-B01/SASC1ST1V13/SASC1ST1V13/B

Maximum working pressure is 250 bar.  
Maksimum çalışma basıncı 250 bar.

### Tandem Circuit Tandem Devre



Code / Kod

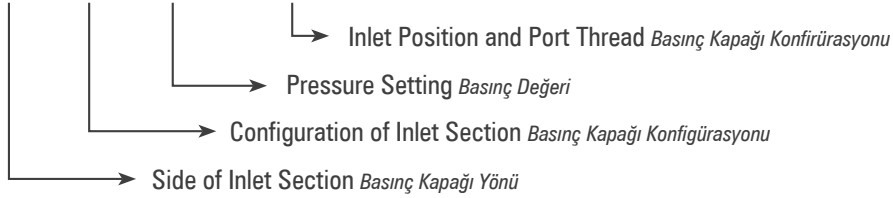
**T**

Tandem Circuit is coded with «T» before each series working section demanded.  
Example Coding: CNC S52/IL-005(180)-B01/TASC1ST1V13/TASC1ST1V13/B Seri devre her seri dilimin önüne «T» gelecek şekilde kodlanır.  
Örnek Kodlama: CNC S52/IL-005(180)-B01/TASC1ST1V13/TASC1ST1V13/B

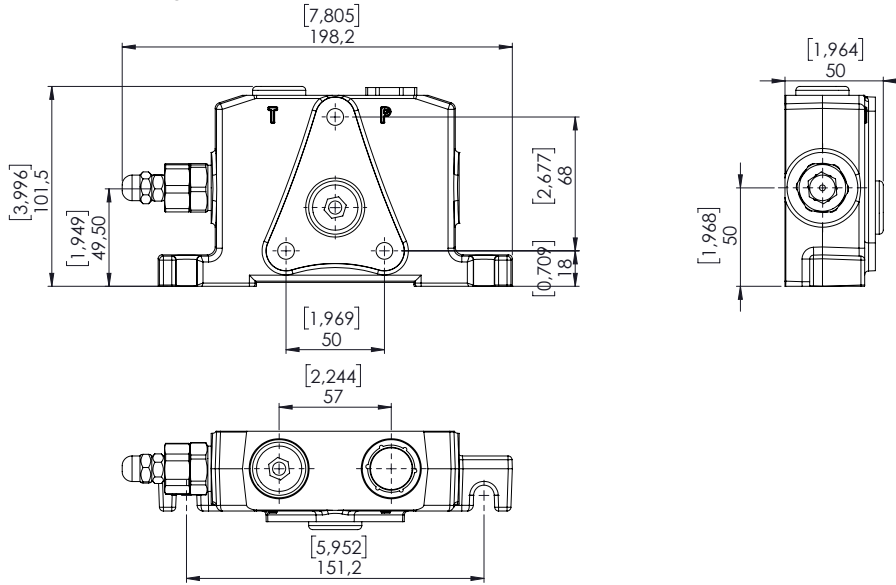
# Inlet Option

## Basınç (P) Hattı Opsiyonları

CNC S51 / **IL- 005 (180) - B01** / A SC4 ST11 V13 K3 / B

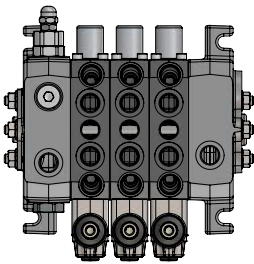


### Inlet Cover *Basınç Kapağı*



### Side of Inlet Section *Basınç Kapağı Yönü*

#### Valve with left inlet *Sol Basınç Kapağı*

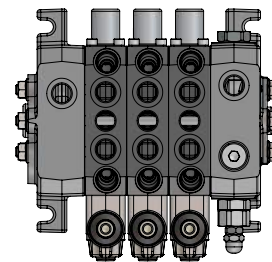


Code / Kod

**IL**

Example coding *Örnek kodlama*  
CNC S51 / IL- 003 (180) - B01

#### Valve with right inlet *Sağ Basınç Kapağı*

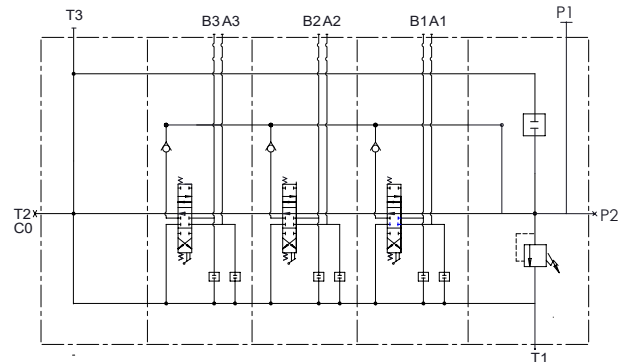
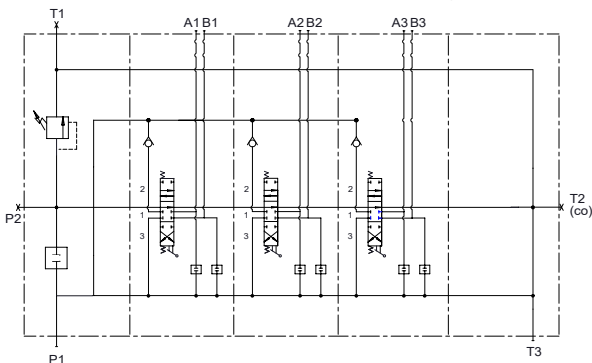


Code / Kod

**IR**

Example coding *Örnek kodlama*  
CNC S51 / IR- 005 (180) - B01

Left inlet is standard onfiguration unless otherwise indicated.  
Aksi belirtilmezse CNC S50 serisi valfler sol basınç kapağı ile üretilir.



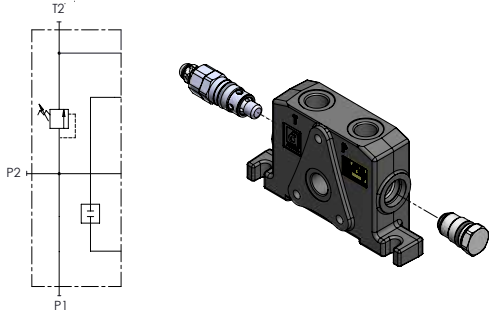
# Configuration of Inlet Section

## Basınç Kapağı Konfigürasyonu

### 003

A Side Direct Acting Main Relief Valve,  
B Main Relief Valve Blanking Plug

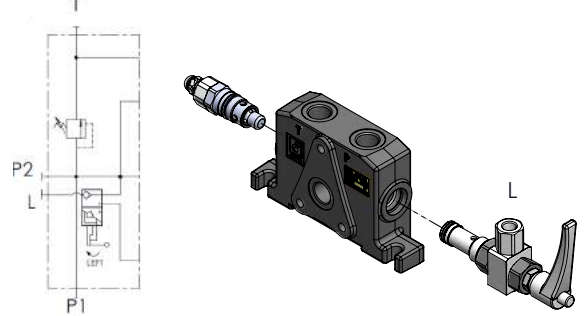
A Tarafı Regülatör, B Kör Regülatör



### 004

A Side Direct Acting Main Relief Valve,  
B Side Hydraulic Lock or Brake Valve

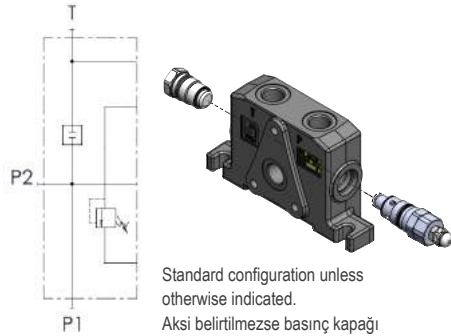
A Tarafı Regülatör, B Tarafı Kilit Valfi



### 005

A Side Main Relief Valve Blanking Plug,  
B Side Direct Acting Main Relief Valve

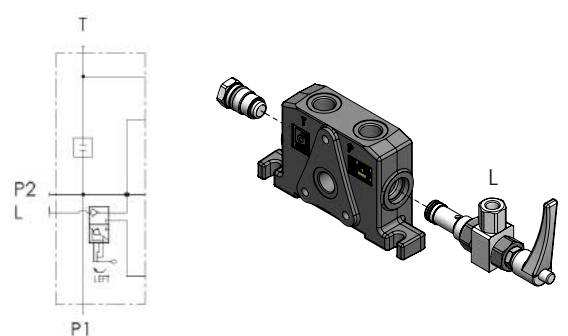
A Tarafı Kör Regülatör, B Tarafı Regülatör



### 006

A Side Main Relief Valve Blanking Plug,  
B Side Hydraulic Lock or Brake Valve

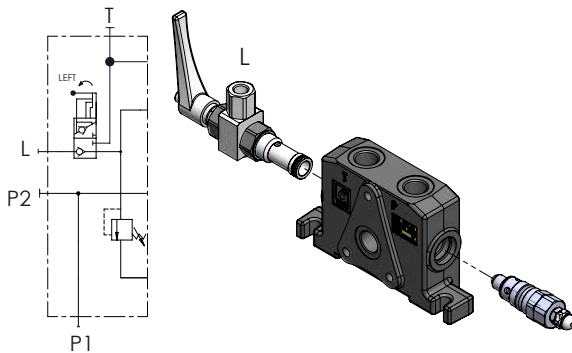
A Tarafı Kör Regülatör, B Tarafı Kilit Valfi



### 007

A Side Hydraulic Lock or Brake Valve  
B Side Direct Acting Main Relief Valve

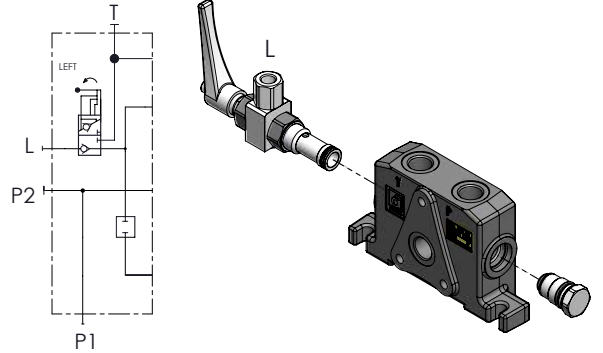
A Tarafı Kilit Valfi, B Tarafı Regülatör



### 008

A Side Hydraulic Lock or Brake Valve  
B Side Main Relief Valve Blanking Plug

A Tarafı Kilit Valfi, B Tarafı Kör Regülatör



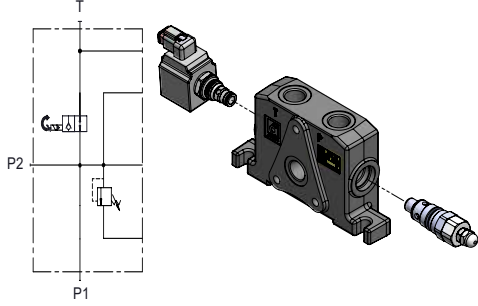
# Configuration of Inlet Section

## Basınç Kapağı Konfigürasyonu

### 009

A Side Unloading Valve  
B Side Direct Acting Main Relief Valve

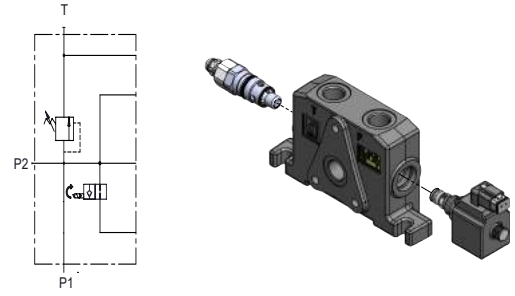
A Tarafı Unloading, B Tarafı Regülatör



### 010

A Side Direct Acting Main Relief Valve,  
B Side Unloading Valve

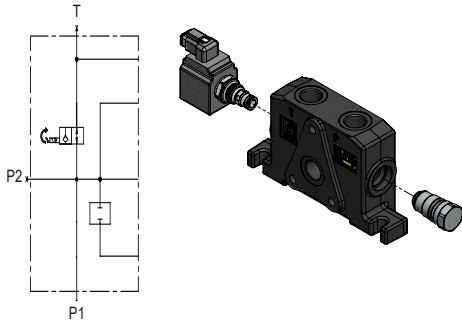
A Tarafı Regülatör, B Tarafı Unloading



### 011

A Side Unloading Valve  
B Side Main Relief Valve Blanking Plug

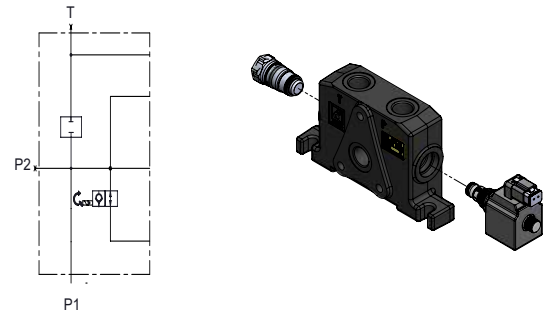
A Tarafı Unloading, B Tarafı Kör Regülatör



### 012

A Side Main Relief Valve Blanking Plug,  
B Side Unloading Valve

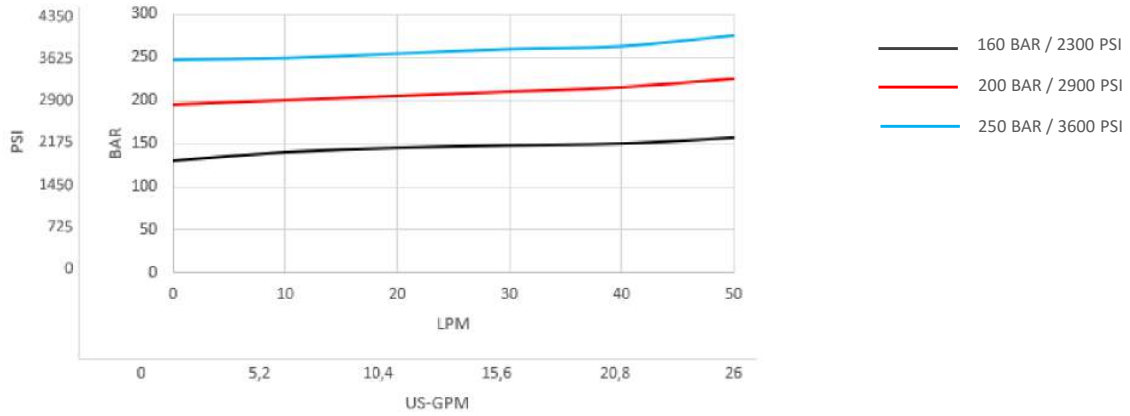
A Tarafı Kör Regülatör, B Tarafı Unloading



## Inlet Position and Thread Type *Basınç Kapağı Konfigürasyonu*

Code <i>Kod</i>	Port Threads <i>Paso Tipi</i> P1, P2, T3	Connection Port <i>Bağlantı Portu</i>	Steel Plug <i>Kör Tapa</i>	Load Sense Connection <i>Load Sense Bağlantısı</i>
B01	G 1/2"	P1	P2, T1	-
B02	G 1/2"	P1	T1	LS(G 1/4")
B03	G 1/2"	P2	P1, T1	-

## Main Relief Valve Performance Data *Ana Emniyet Valfi Performans Eğrisi*



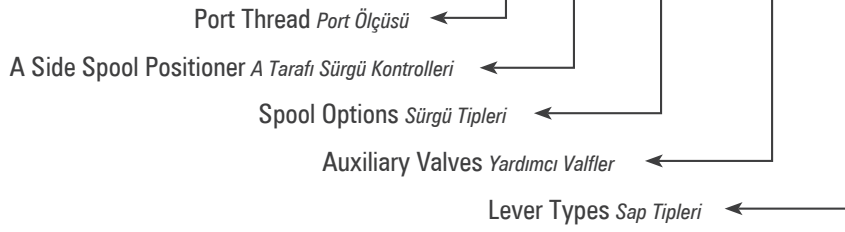
Measured with 32 cSt hydraulic oil @ 40°C and neglected tank line pressure.  
32 cSt hidrolik yağ ile 40°C'de, tank hattı basıncı ihmal edilerek ölçülmüştür.



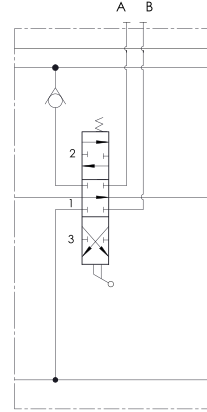
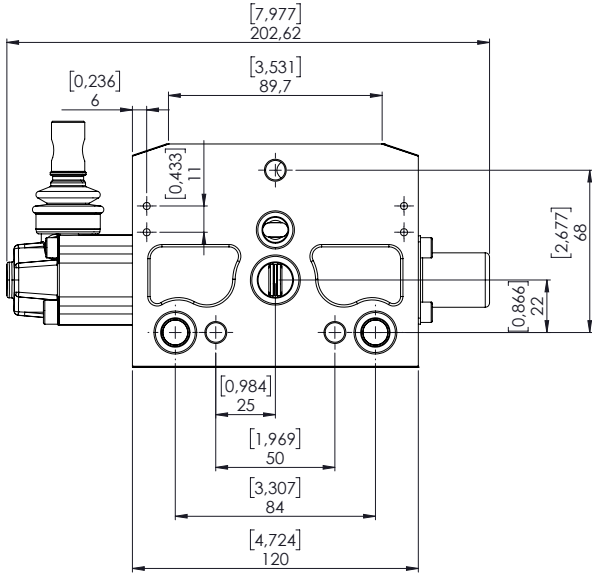
# Working Section

## Dilim

CNC S51 / IL- 005 (180) - B01 / A SC4 ST11 V13 K3 / B

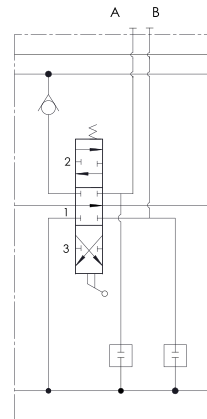
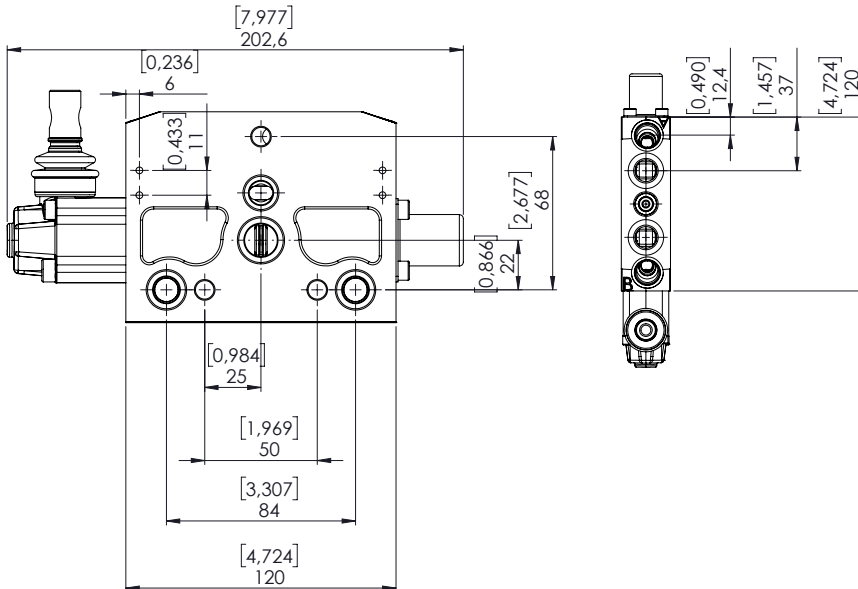


### Working section without port relief cavity *Standart Dilim*



Hydraulic Circuit  
*Hidrolik Devre*

### Working section with port relief cavity *Antişok portları işlenmiş dilim*



Hydraulic Circuit  
*Hidrolik Devre*

# Spool Positioners

## Sürgü Kontrolleri

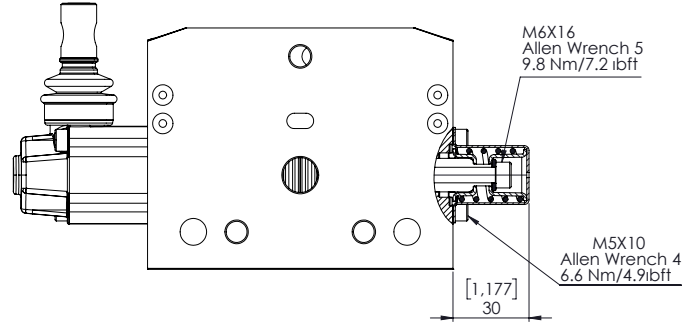
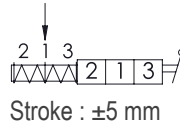
CNC S51 / IL- 005 (180) - B01 / A **SC4** ST11 V13 K3 / B

Spool Positioners Sürgü Kontrolleri

### Spool Positioners with Spring Return *Yay Dönüslü Sürgü Kontrolleri*

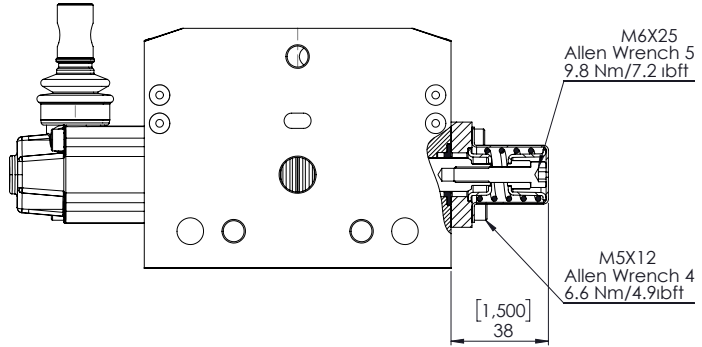
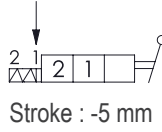
## SC1

3 Pozisyon Yaylı



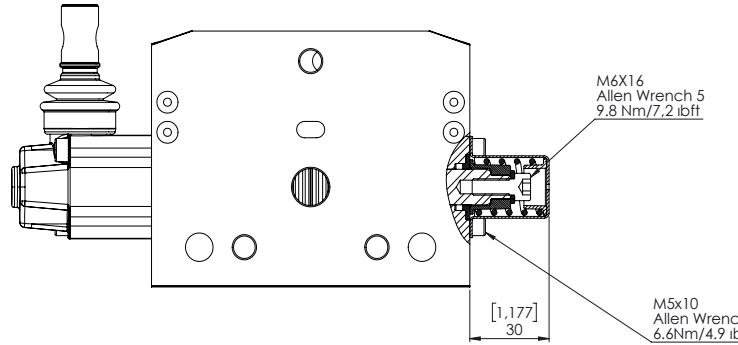
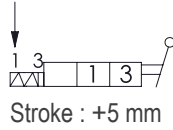
## SC5

2 Pozisyon Yaylı



## SC6

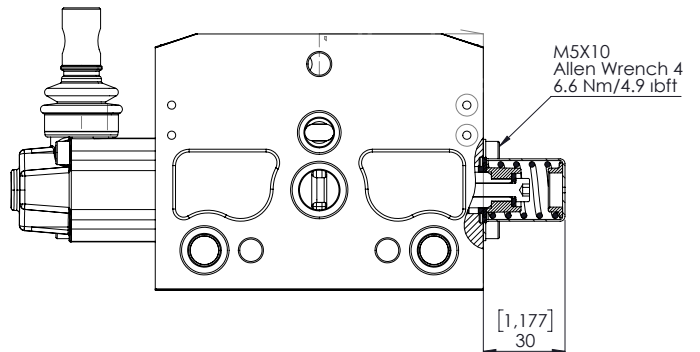
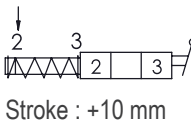
2 Pozisyon Yaylı



## SC11

2 Positions Spring Return in 3rd Position

2 Pozisyon, 3. Pozisyona Yaylı



# Spool Positioners

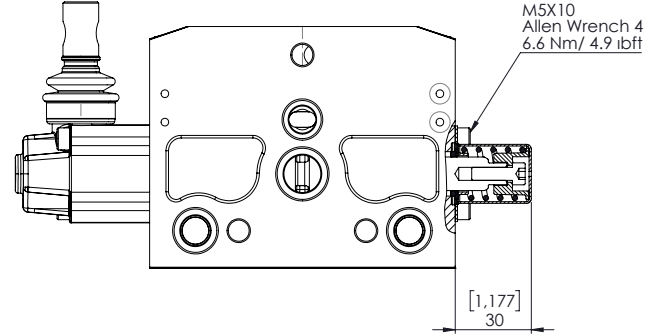
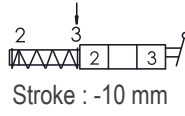
## Sürgü Kontrolleri

### Spool Positioners with Spring Return *Yay Dönüslü Sürgü Kontrolleri*

## SC12

2 Positions Spring Return in 2nd Position

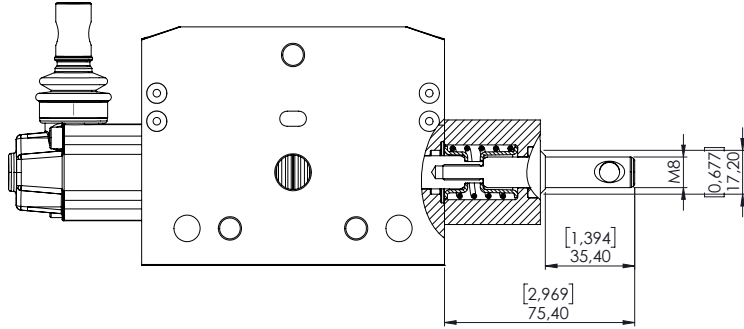
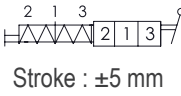
2 Pozisyon, 2. Pozisyona Yaylı



## SC25

3 Position Spring Return with male M8 pin extension for dual control

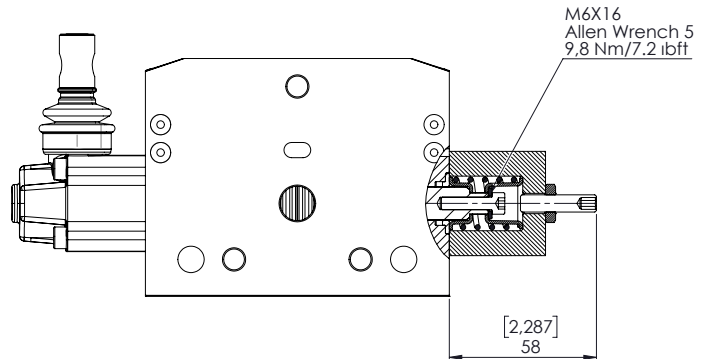
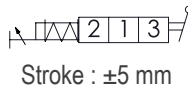
3 Pozisyon Yaylı, M8 Erkek Uzatmalı



## SC33

2 Positions Spring Return in 2nd Position

2 Pozisyon, 2. Pozisyona Yaylı



# Spool Positioners

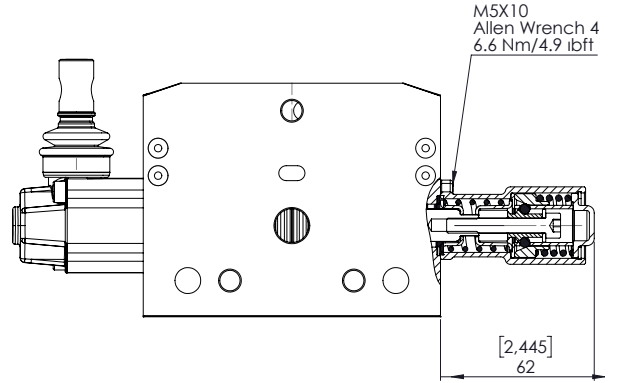
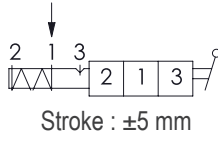
## Sürgü Kontrolleri

### Spool Positioners with Detent *Detantlı Sürgü Kontrolleri*

## SC2

3 Position Spring Return,  
Detent in Pos. 3

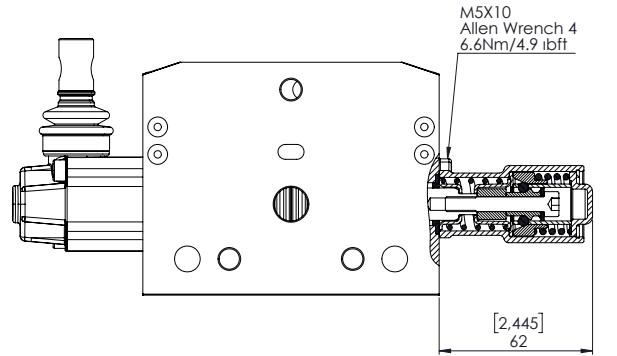
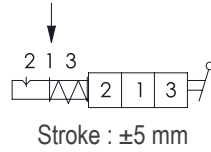
3 Pozisyon Yaylı, 3.Pozisyon  
Detantlı



## SC3

3 Position Spring Return,  
Detent in Pos. 2

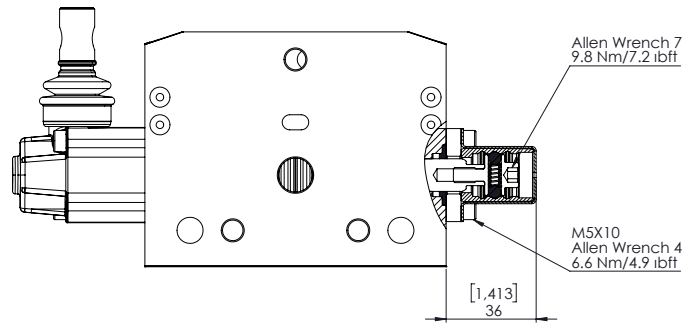
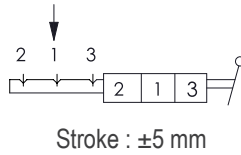
3 2



## SC4

3 Position Detent in All  
Positions

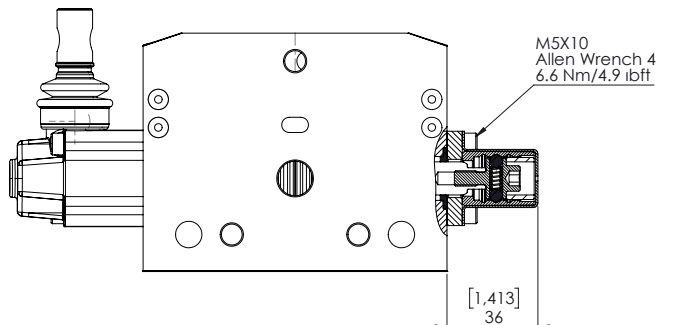
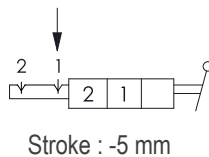
3 Tümü Detantlı



## SC7

2 Position Detent

2 Pozisyon, Detantlı



# Spool Positioners

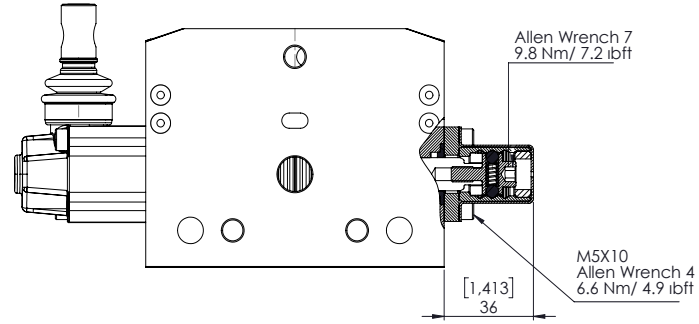
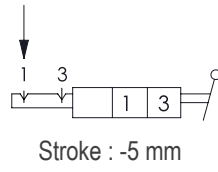
## Sürgü Kontrolleri

### Spool Positioners with Detent *Detantlı Sürgü Kontrolleri*

## SC8

2 Position Detent  
Detent in Pos. 1,3

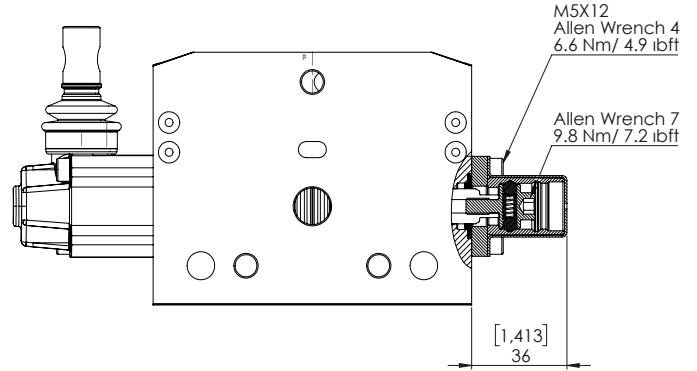
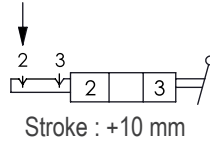
2 Pozisyon, Detantlı



## SC13

2 Position Detent  
Detent in Pos. 2,3

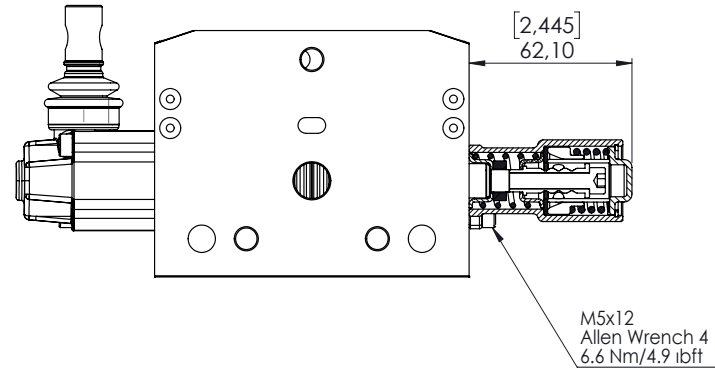
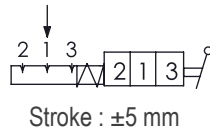
2 Pozisyon, Detantlı



## SC28

3 Position Detent in All  
Positions

3 Tümü Detantlı



# Spool Positioners

## Sürgü Kontrolleri

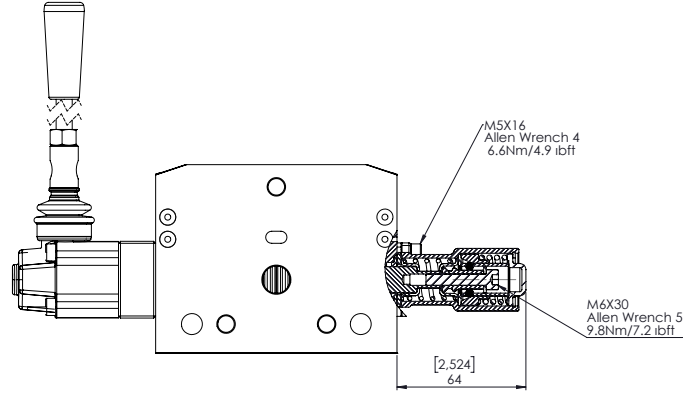
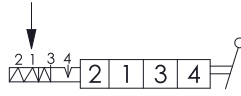
### 4 Position Spool Positioners 4 Pozisyon Sürgü Kontrolleri

## SC9

4 Position Spring Return,  
Detent in 4th Pos.

4 Pozisyon Yaylı, 4.Pozisyon  
Detantlı

Used with Spool ST9B  
ST9B Sürgü ile kullanılır

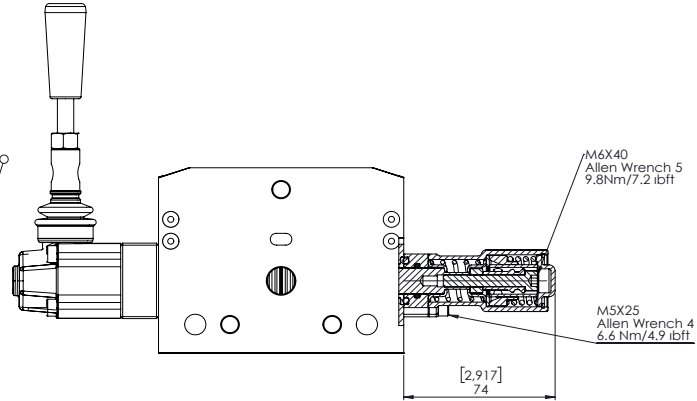
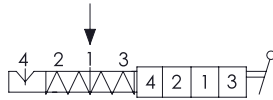


## SC23

4 Position Spring Return,  
Detent in 4th Pos.

4 Pozisyon Yaylı, 4.Pozisyon  
Detantlı

Used with Spool ST9A  
ST9A Sürgü ile kullanılır

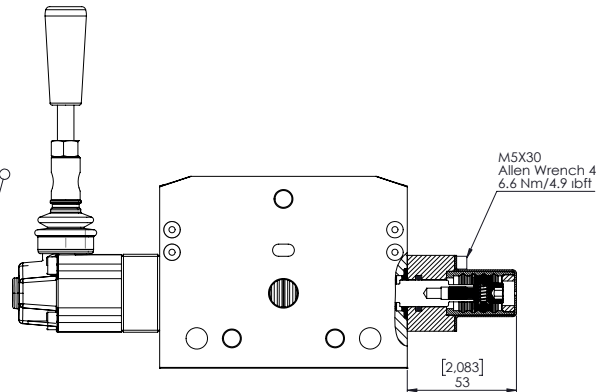
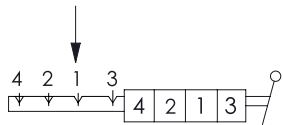


## SC10

4 Position Detent in All  
Positions

4 Pozisyon Tüm Pozisyonlar  
Detantlı

Used with Spool ST9A  
ST9A Sürgü ile kullanılır





# Spool Positioners

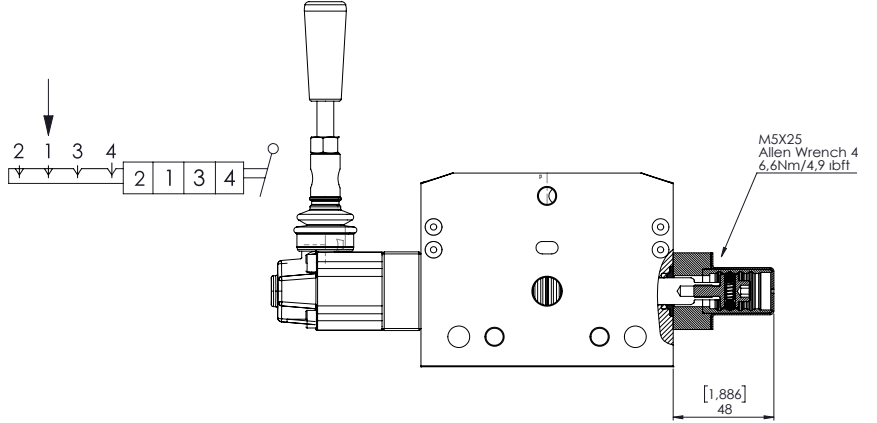
## Sürgü Kontrolleri

### 4 Position Spool Positioners 4 Pozisyon Sürgü Kontrolleri

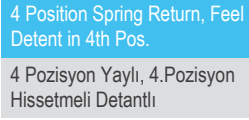
## SC24



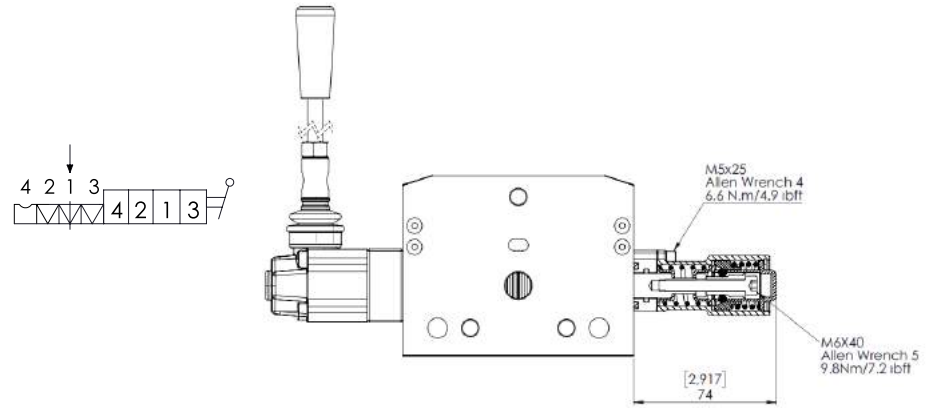
Used with Spool ST9B  
ST9B Sürgü ile kullanılır



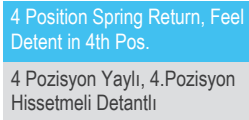
## SC21



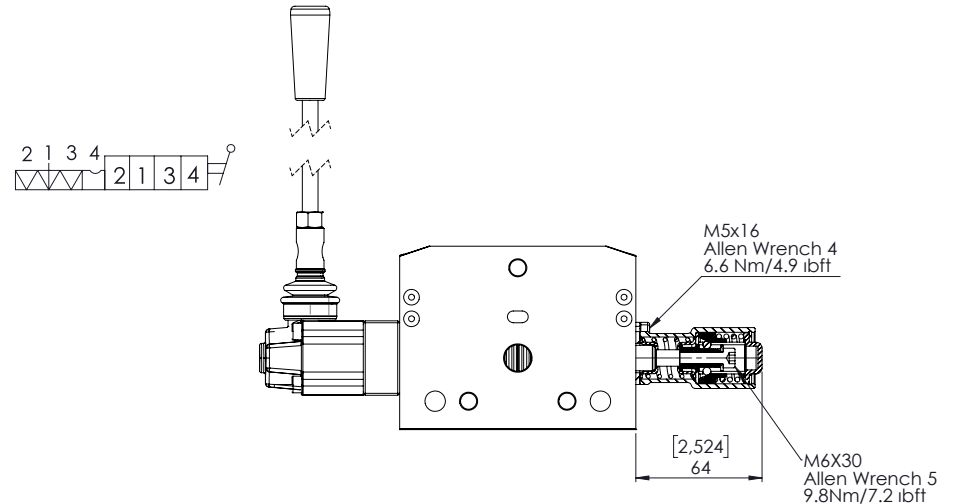
Used with Spool ST10A  
ST10A Sürgü ile kullanılır



## SC22



Used with Spool ST10B  
ST10B Sürgü ile kullanılır



# Spool Positioners

## Sürgü Kontrolleri

### SC15

On-Off Pneumatic Control

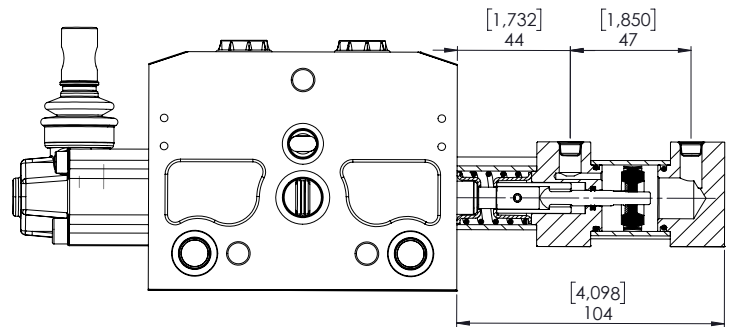
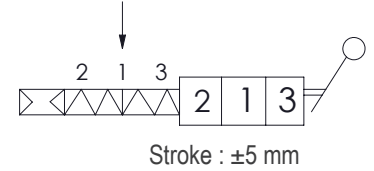
On-Off Pnömatik Kontrol

Pilot Pressure  
Pilot Basıncı

Min. 6 Bar / 85 PSI  
Max. 12 Bar / 170 PSI

Stroke (mm)  
Strok (mm)

±5 mm



### SC16

On-Off Hydraulic Control

On-Off Hidrolik Kontrol

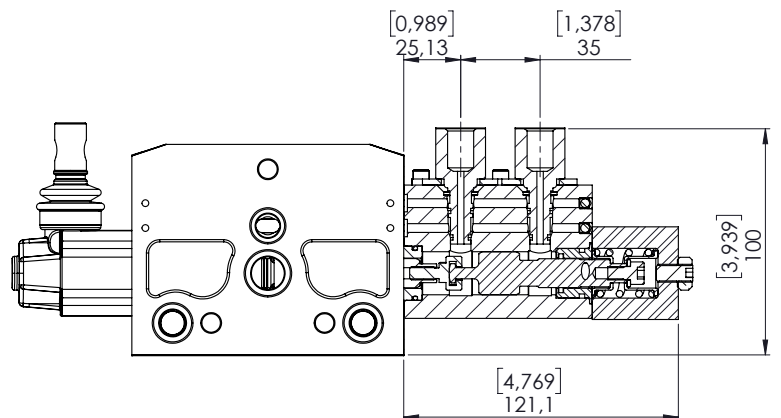
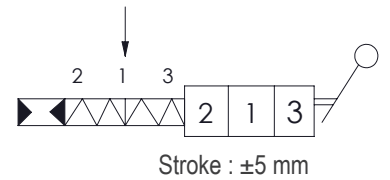
#### Operation Characteristics

Pilot Pressure  
Pilot Basıncı

Min. 6 Bar / 85 PSI  
Max. 50 Bar / 720 PSI

Stroke (mm)  
Strok (mm)

±5 mm



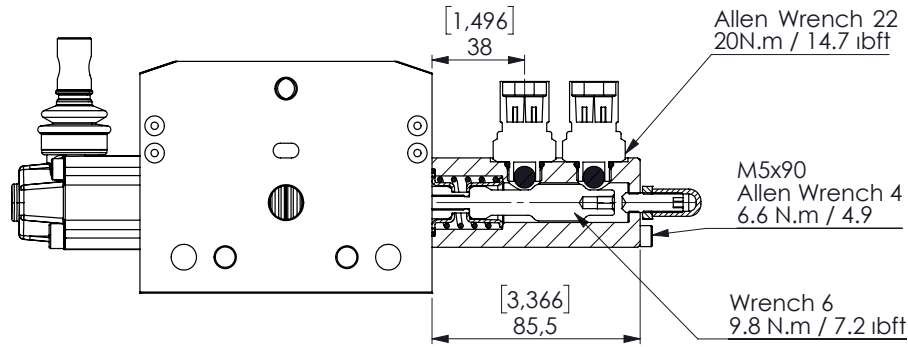
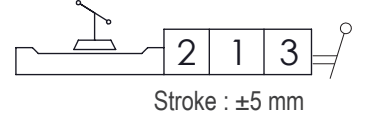
# Spool Positioners

## Sürgü Kontrolleri

### SC18

3 Positions, Microswitch Operation in both positions (NC)

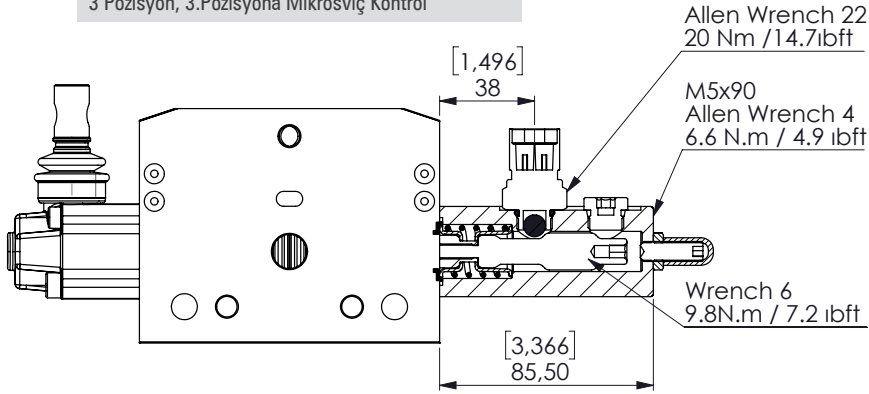
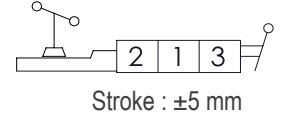
3 Pozisyon, Çift Taraflı Mikrosviç Kontrol (NK)



### SC18A

3 Positions, Microswitch Operation in 3rd Position

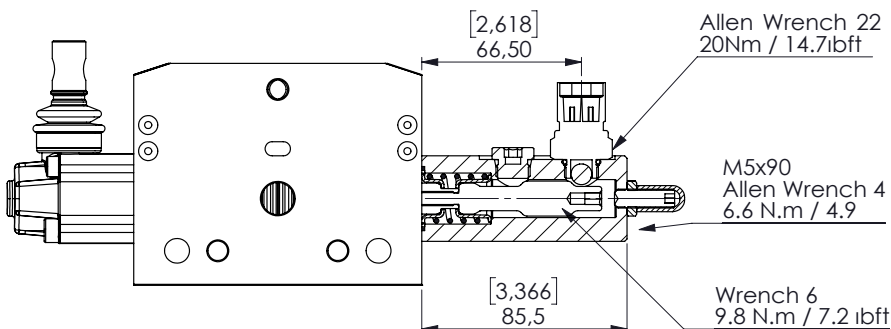
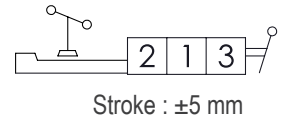
3 Pozisyon, 3.Pozisyona Mikrosviç Kontrol



### SC18B

3 Positions, Microswitch Operation in 2nd Position

3 Pozisyon, 2.Pozisyona Mikrosviç Kontrol



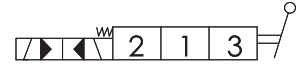
# Spool Positioners

## Sürgü Kontrolleri

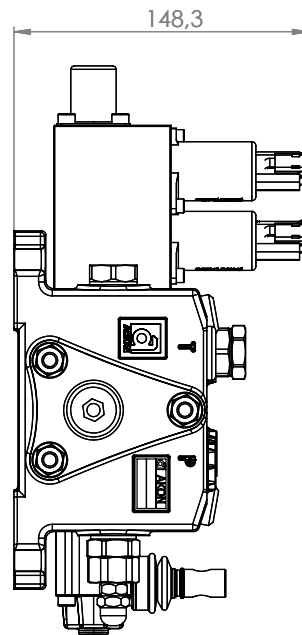
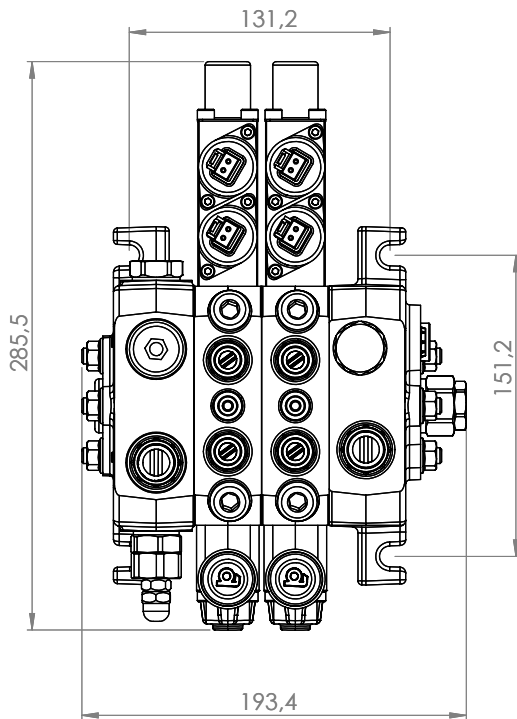
# SC17

On-Off Electro-Hydraulic Control

On-Off Elektro-Hidrolik Kontrol



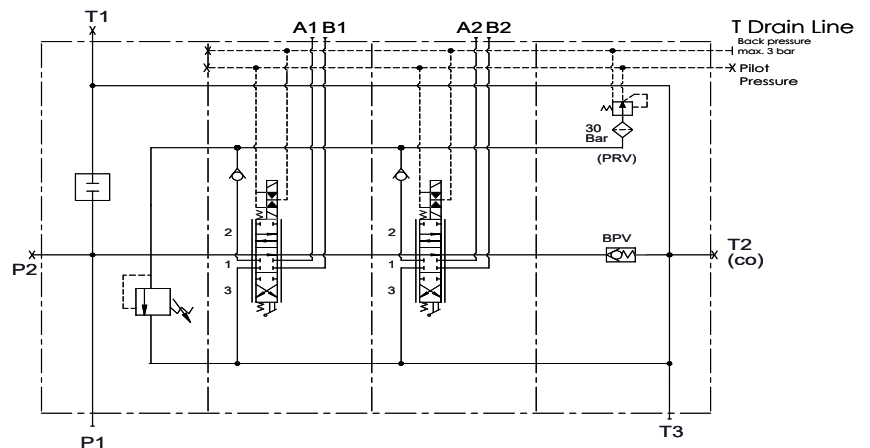
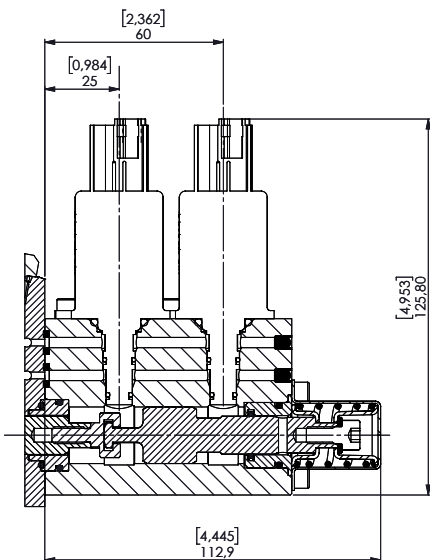
Stroke : ±5 mm



Voltage	Code / Kod
12VDC	<b>SC172</b>
24VDC	<b>SC174</b>

### Standard Connection and Hydraulic Circuit

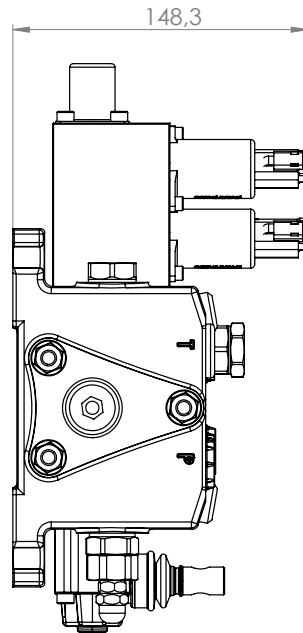
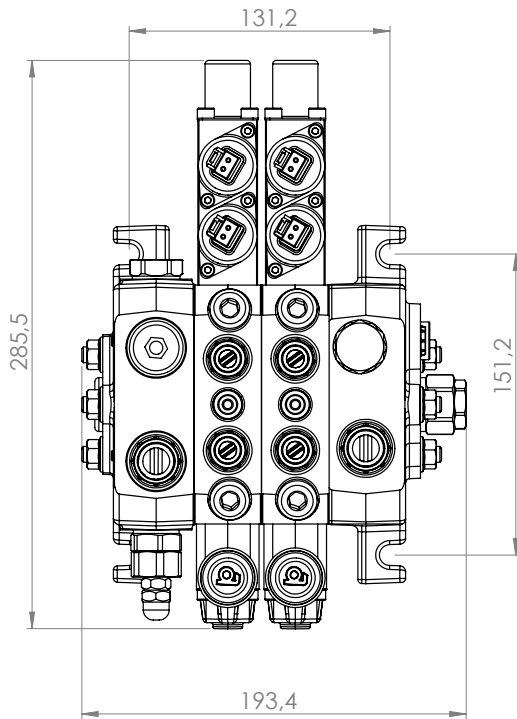
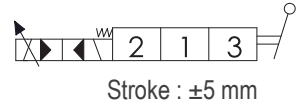
### Standart Bağlantı ve Hidrolik Devre



# Spool Positioners

## Sürgü Kontrolleri

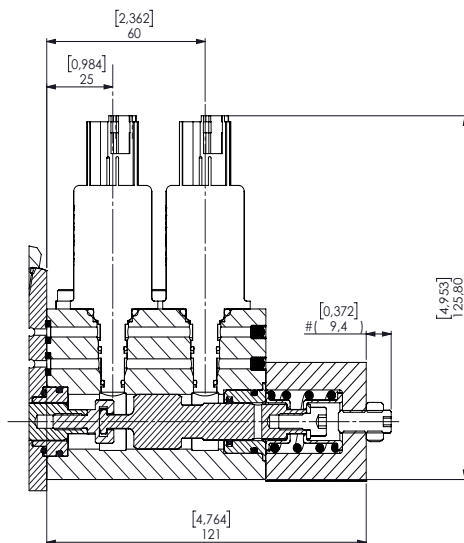
**SC34** Proportional Electro-Hydraulic Control Pneumatic Control  
Oransal Elektro-Hidrolik Kontrol



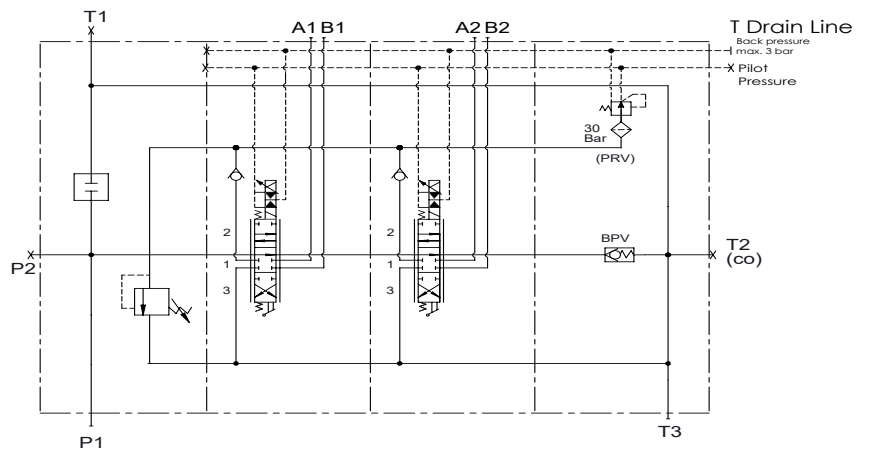
Voltage	Code / Kod
12VDC	<b>SC 342</b>
24VDC	<b>SC 344</b>

### Standard Connection and Hydraulic Circuit

### Standart Bağlantı ve Hidrolik Devre



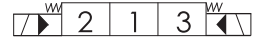
E (1 : 1)



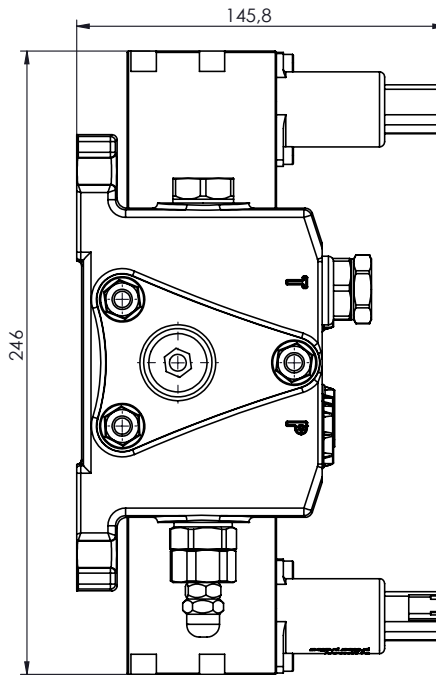
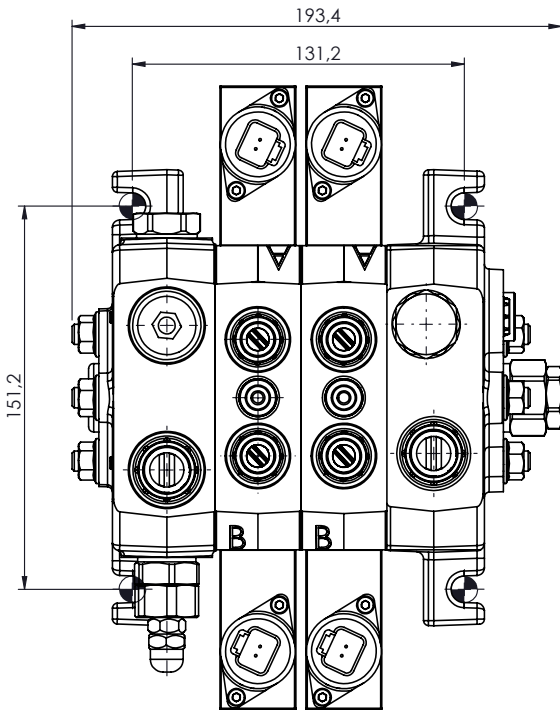
# Spool Positioners

## Sürgü Kontrolleri

**SC38** On/Off Electro-Hydraulic Control  
On/Off Elektro-Hidrolik Kontrol



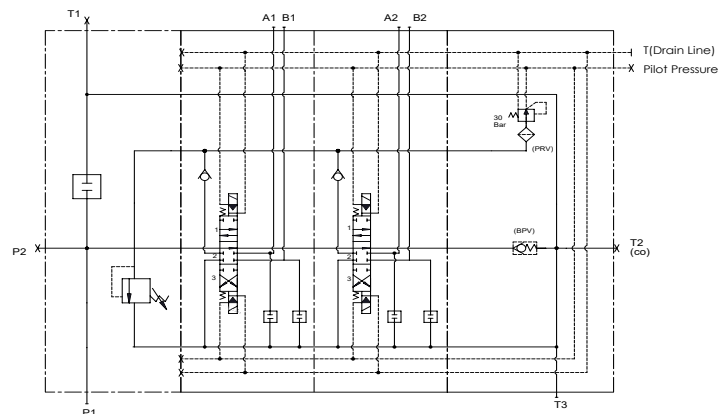
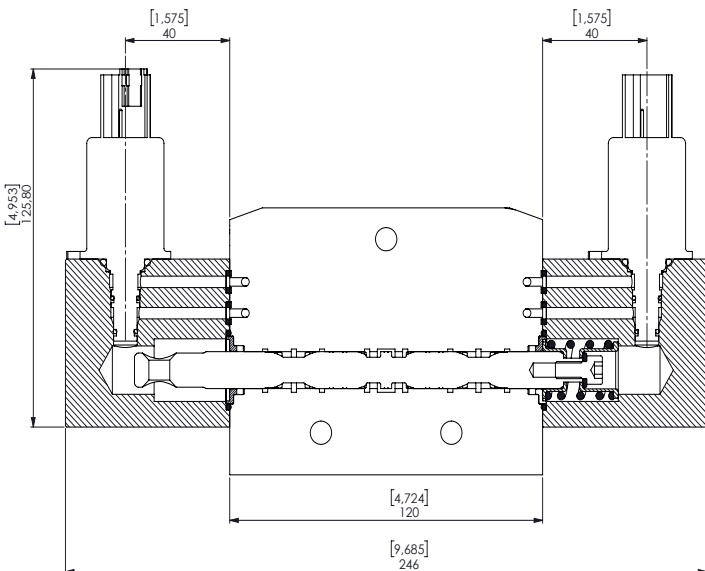
Stroke : ±5 mm



Voltage	Code / Kod
12VDC	<b>SC382</b>
24VDC	<b>SC384</b>

### Standard Connection and Hydraulic Circuit

### Standart Bağlantı ve Hidrolik Devre





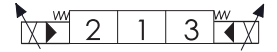
# Spool Positioners

## Sürgü Kontrolleri

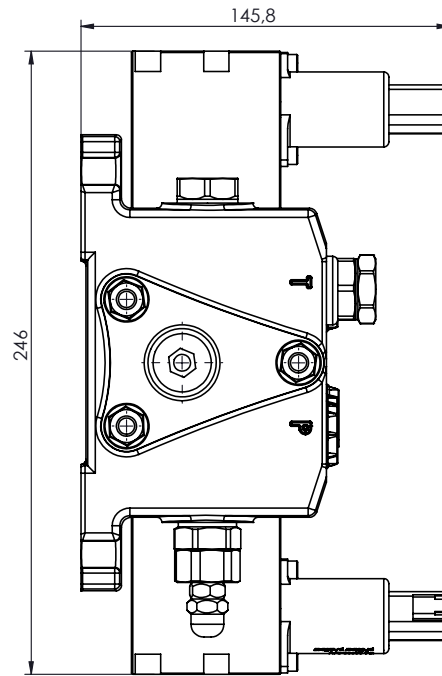
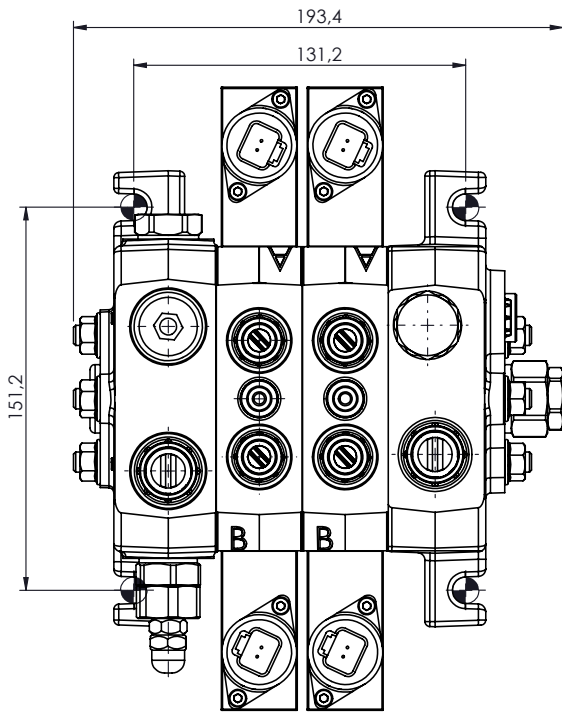
# SC43

Proportional Electro-Hydraulic Control

Oransal Elektro-Hidrolik Kontrol



Stroke : ±5 mm

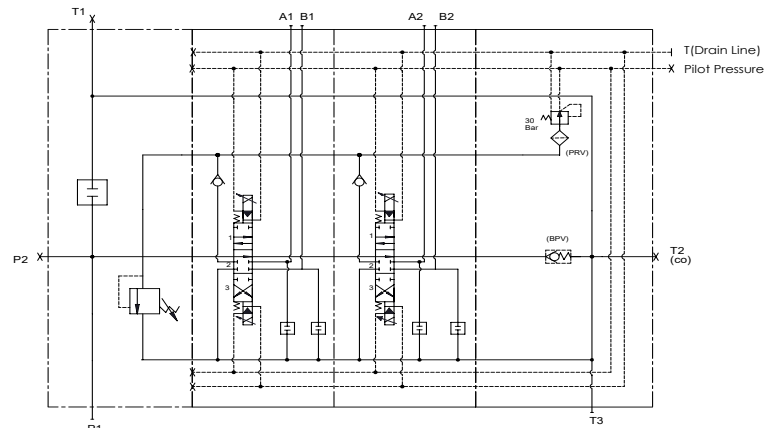
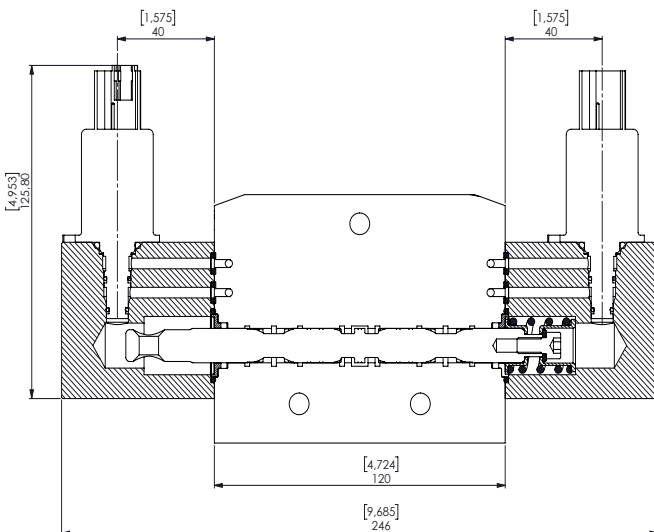


Voltage  
12VDC  
24VDC

Code / Kod  
**SC432**  
**SC434**

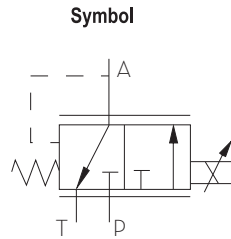
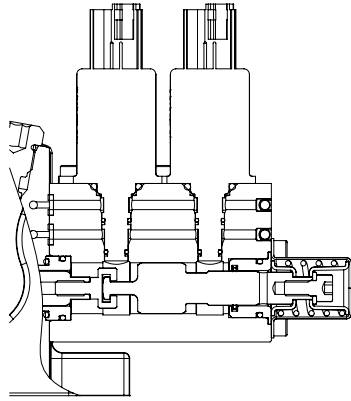
### Standard Connection and Hydraulic Circuit

### Standart Bağlantı ve Hidrolik Devre

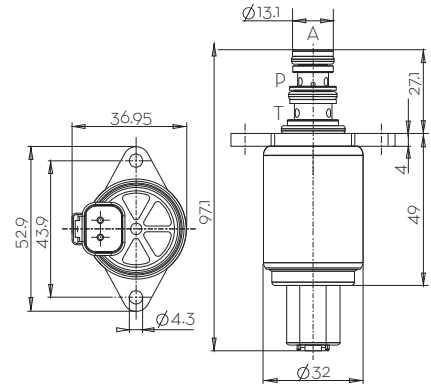


# Coil Characteristics

## Bobin Özellikleri



Dimensions with Deutsch Connector  
(All dimensions in mm)



### Hydraulic Data

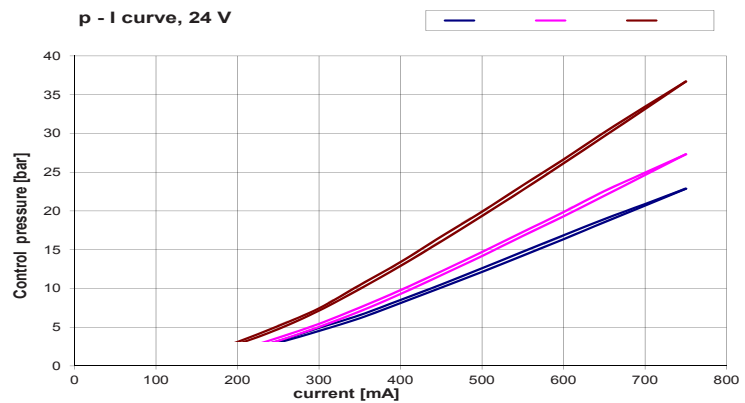
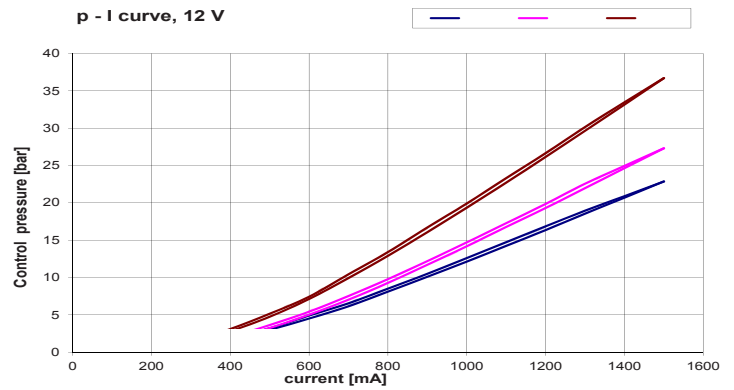
Max Pressure (P, T)	pP = 50 bar, pT = 30 bar
Hysteresis (w/ PWM)	< 0.4 bar (pA=20) < 0.5 bar (pA=25) < 0.7 bar (pA=32)
Filter Screen	125 $\mu$ m
Contamination Level	Min Filtration: 20/18/15 According to ISO 4406
Fluid	Mineral Oil According to DIN 51524
Temperature Range Fluid	-40 to +105°C

### Electrical Data

Norm. Voltage	12 V	24 V
Current	1500 mA	750 mA
Resistance	5.3 $\Omega$ $\pm$ 5%	21.2 $\Omega$ $\pm$ 5%
Type of Control	Current Control PWM 100 Hz Recommended	
Connector	AMP Junior Timer Deutsch Connector DT04-2P	
Protection Class	Up to IP6K6 / IPX9K	

### Current vs. Pressure

Less than 2% Hysterisis



# Spool Options

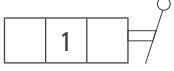
## Sürgü Tipleri

CNC S51 / IL- 005 (180) - B01 / A SC4 **ST11** V13 K3 / B

Spool Options  
Sürgü Tipleri

### Spool Positions Sürgü Pozisyonları

1st Position  
1. Pozisyon  
Spool Neutral Position  
Nötr



2nd Position  
2. Pozisyon  
Spool In Position  
Mil İçerde



B -> T  
P -> A

3rd Position  
3. Pozisyon  
Spool Out Position  
Mil Dışarda



A -> T  
P -> B

4th Position  
4. Pozisyon  
4th Pos. Spool Out  
4. Pozisyon Mil Dışarda

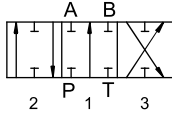


4th Pos. Spool In  
4. Pozisyon Mil İçerde



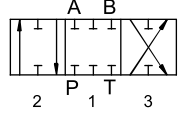
## ST1

3 Position, Double Acting  
3 Pozisyon, Çift Etkili



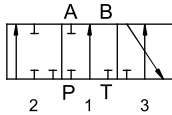
## ST4

3 Position, Closed Center  
3 Pozisyon, Kapalı Merkez



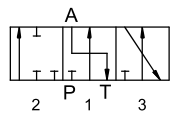
## ST2

3 Position, A Port Single Acting  
3 Pozisyon, A Port Tek Etkili



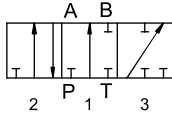
## ST5

3 Position, A Port Single Acting and to Tank  
3 Pozisyon, A Port Tek Etkili ve Tanka Açık



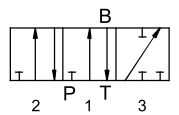
## ST3

3 Position, B Port Single Acting  
3 Pozisyon, B Port Tek Etkili



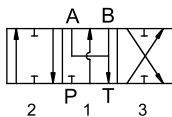
## ST6

3 Position, B Port Single Acting and to Tank  
3 Pozisyon, B Port Tek Etkili ve Tanka Açık



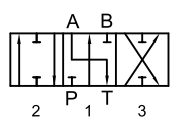
## ST11

3 Position, Double Acting, A/B to Tank  
3 Pozisyon, Çift Etkili A ve B Tanka Açık



## ST7

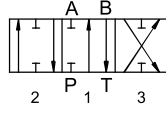
3 Position, Double Acting A to Tank  
3 Pozisyon, Çift Etkili ve A Tanka Açık



# ST8

3 Position,  
Double Acting B to Tank

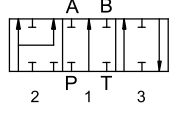
3 Pozisyon,  
Çift Etkili ve B Tanka Açık



# S12A

3 Position, Double Acting With  
Regenerative in 3rd Position  
(2nd Position Spool In)

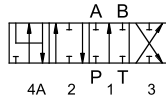
3 Pozisyon, Çift Etkili  
3. Pozisyonda Rejeneratif  
(Mil İçerde 2. Pozisyon)



# ST9A

4 Position, Double Acting with  
Float in 4th Position  
(4th Position Spool In)

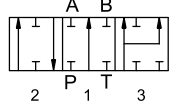
4 Pozisyon, 4. Pozisyonda Float  
(Mil İçerde 4. Pozisyon)



# ST12B

3 Position, Double Acting With  
Regenerative in 2nd Position  
(3rd Position Spool Out)

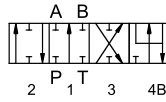
3 Pozisyon, Çift Etkili  
2. Pozisyonda Rejeneratif  
(Mil Dışarda 3. Pozisyon)



# ST9B

4 Position, Double Acting with  
Float in 4th Position  
(4th Position Spool Out)

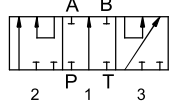
4 Pozisyon, 4. Pozisyonda Float  
(Mil Dışarda 4. Pozisyon)



# ST19

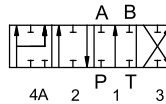
3 Position, Series Spool

3 Pozisyon, Seri Sürgü



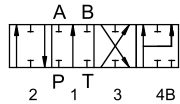
# ST10A

4 Pozisyon,  
4. Pozisyonda Rejeneratif  
(Mil İçerde 4. Pozisyon)



# ST10B

4 Pozisyon,  
4. Pozisyonda Rejeneratif  
(Mil Dışarda 4. Pozisyon)



# Auxiliary Valves

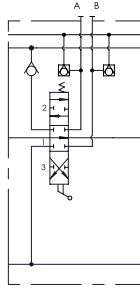
## Yardımcı Valfler

CNC S51 / IL- 005 (180) - B01 / A SC4 ST11 **V13** K3 / B

Auxiliary Valves  
Yardımcı Valfler

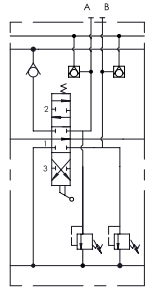
### V4

Anticavitation valves on A & B ports  
A & B portlarında antikavitasyon valfi



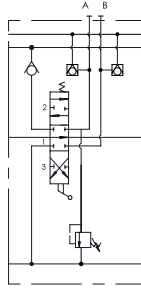
### V7

Antishock & anticavitation valves on A & B ports  
A & B portlarında antişok & antikavitasyon valfi



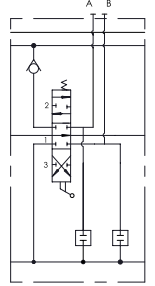
### V12

Antishock & anticavitation valve on port A & anticavitation valve on port B  
A portunda antişok & antikavitasyon valfi & B portunda antikavitasyon valfi



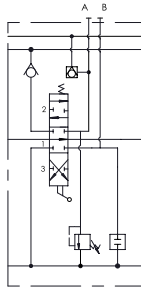
### V13

Port relief cavity plug on A & B ports  
A & B portlarında kör tapa



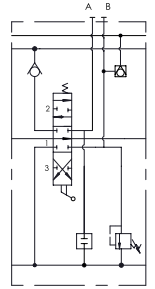
### V19

Antishock & anticavitation valve on port A & port relief cavity plug on port B  
A portunda antişok & antikavitasyon valfi & B portunda kör tapa



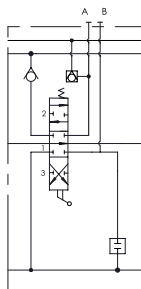
### V20

Port relief cavity plug on port A & antishock & anticavitation valve on port B  
A portunda kör tapa & B portunda antişok & antikavitasyon valfi



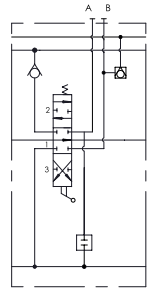
### V21

Anticavitation valve on port A & port relief cavity plug on port B  
A portunda antikavitasyon valfi & B portunda kör tapa



### V22

Port relief cavity plug on port A & anticavitation valve on port B  
A portunda kör tapa & B portunda antikavitasyon valfi



# Lever Types

## Sap Tipleri

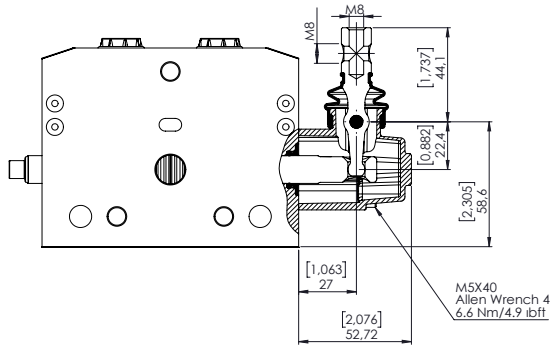
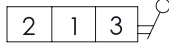
CNC S51 / IL- 005 (180) - B01 / A SC4 ST11 V13 **K3** / B

Lever Types  
Sap Tipleri

NO  
CODE

Standard Lever Kit

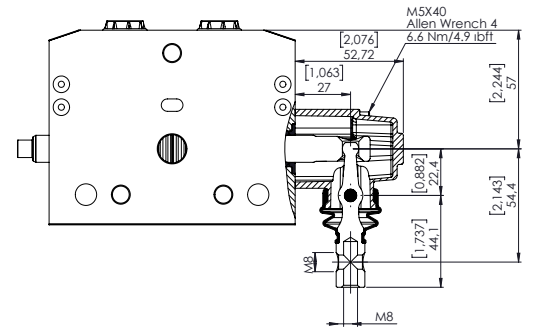
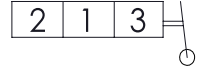
Standart Sap Kapağı



K1

Reverse Lever Kit

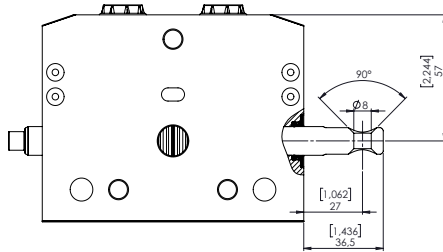
Ters montaj Sap Kapağı



K2

No Lever

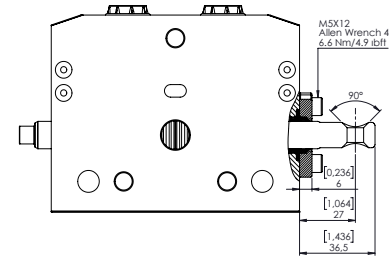
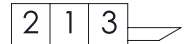
Sap Kapaksız



K3

Dust Proof Plate Kit

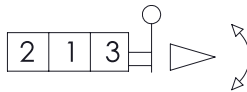
Toz Kapaklı



K4

Safety Lever

Güvenlik Kolu

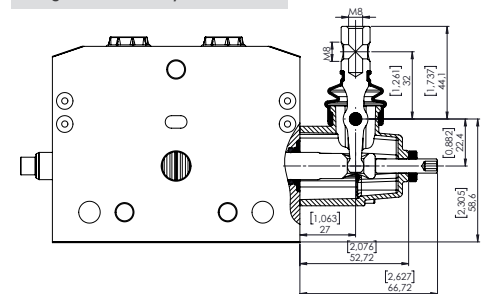
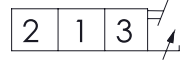


PLEASE  
CONTACT TO  
SALES  
DEPARTMENT

K5

Lever Cap with Spool Limiter

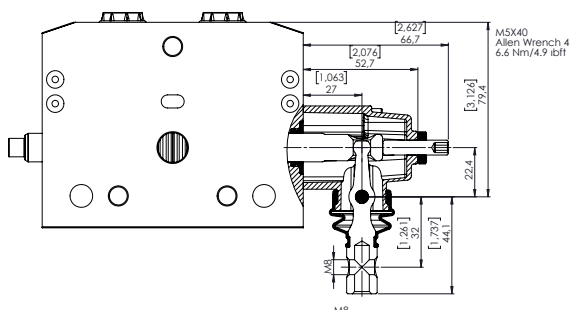
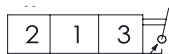
Sürgü Strok Kısıtlayıcı



K6

Rev. Lever Cap with Spool Limiter

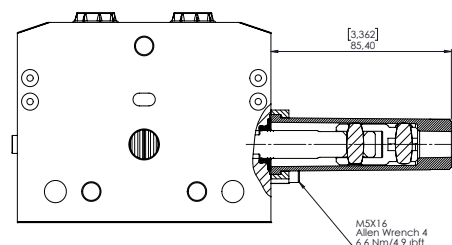
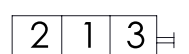
Ters Montaj Sürgü Strok Kısıtlayıcı



KT

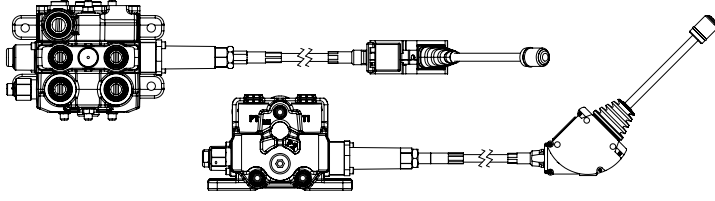
Cable Connection Kit

Kablo Bağlantı Kiti

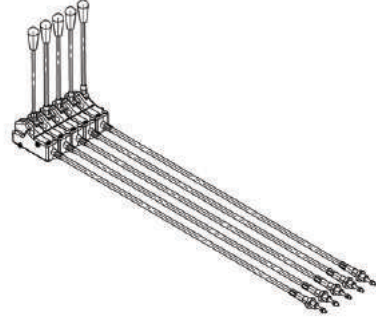




## Lever Cable Remote Control *Halat Kontrol*



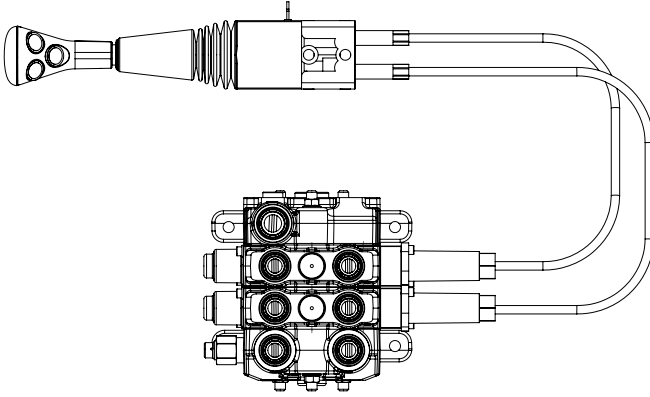
## Cable remote control for Group of Levers *Halat Kontrol Grubu*



Lever cable remote control and cable remote control for group of levers are a modular system offering unlimited number of levers together through screws, also with many different configurations and cables lengths. Assembled on the valve only on request and extra charge. Please contact our sales department for details.

*Halat kontrol ve halat kontrol grubu için farklı uzunlukları mevcuttur. Halat Kontrol grubu ise talebe göre çeşitli dilim sayıları için ve çeşitli uzunluklarda temin edilir. Kontrol grubu birbirine saplaamlarla bağlanmaktadır. Lütfen detaylı bilgi için satış departmanımızla bağlantıya geçiniz.*

## Remote Joystick Control *Joystik Halat Kontrol*



Remote joystick control is available with several options. Please indicate the cable length demanded and contact our sales department for further demands.

*Joystik halat kontrol farklı çeşit ve uzunluklarda mevcuttur. Lütfen satış departmanımızla bağlantıya geçiniz.*

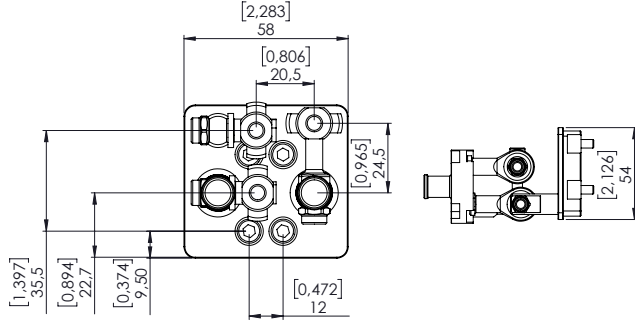
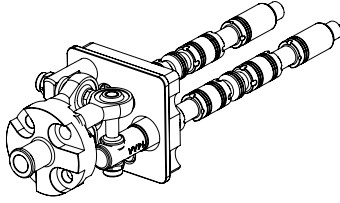
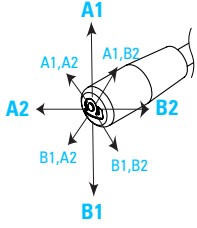
# Joystick Control

## Joystik Kontrol

### K7

Manual Joystick with pivot on top left

Manuel Joystik Kontrol (Pivot Sol Üst)

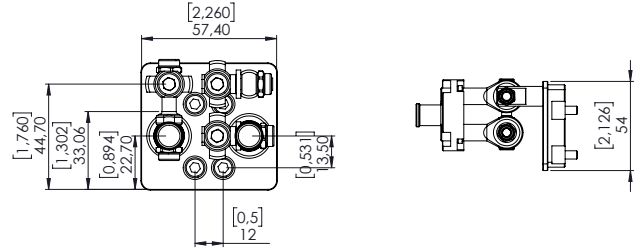
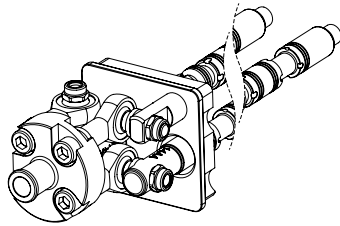
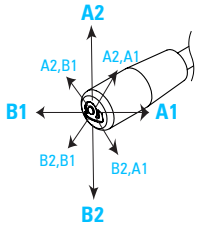


K7 is standard configuration unless otherwise specified.  
Aksi belirtilmedikçe K7 standart konfigürasyondur.

### K7B

Manual Joystick with pivot on top right

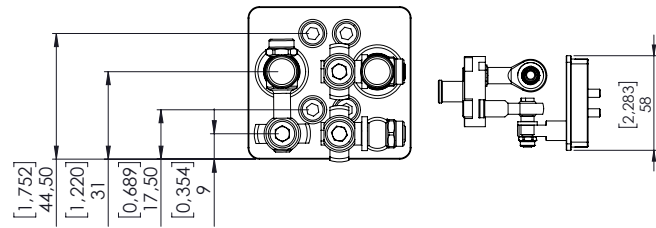
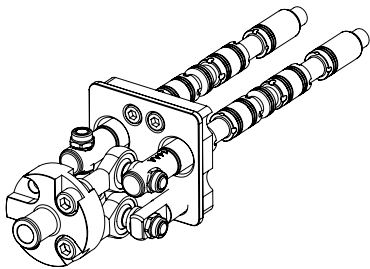
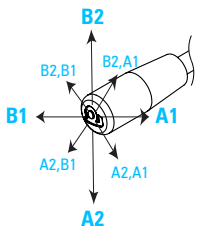
Manuel Joystik Kontrol (Pivot Sağ Üst)



### K7C

Manual Joystick with pivot on bottom right

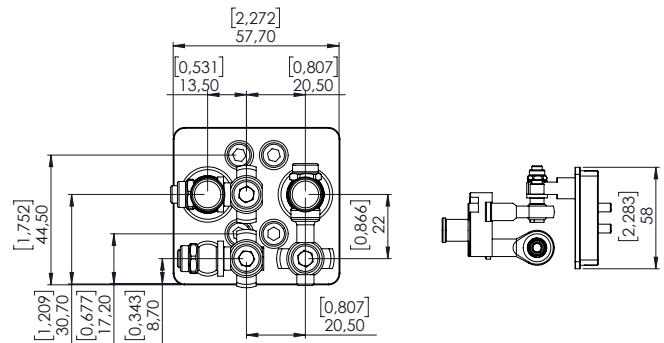
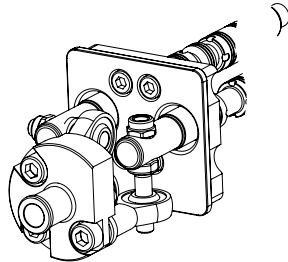
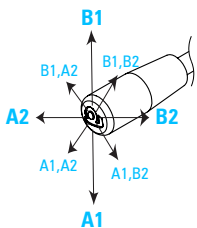
Manuel Joystik Kontrol (Pivot Sağ Alt)



### K7D

Manual Joystick with pivot on bottom left

Manuel Joystik Kontrol (Pivot Sol Alt)



# Outlet Options

## Tank (T) Hattı Opsiyonları

CNC S51 / IL- 005 (180) - B01 / A SC4 ST11 V13 K3 / **B - H**

Outlet Options  
Tank (T) Hattı Opsiyonları

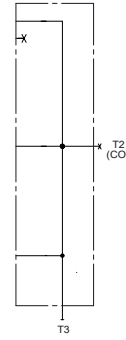
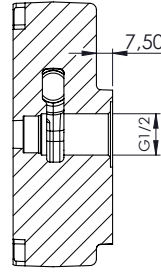
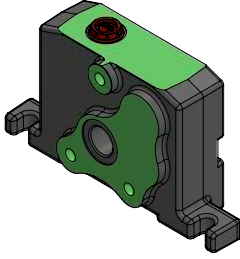
### Standard Open Center Upper Outlet (T3 open, T2 plugged)

#### Standart Açık Merkez (T3 açık, T2 kör)

Demanded port thread of the outlet section need to be coded here.

Tank hattı için talep edilen port ölçüsü burada kodlanmalıdır.

Ex; CNC S51/IL-005(180)-B01/ASC1ST1KT/B



Port Thread

G 1/2"

Order Code

**B**

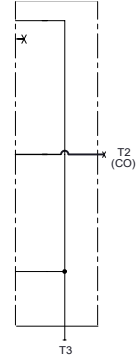
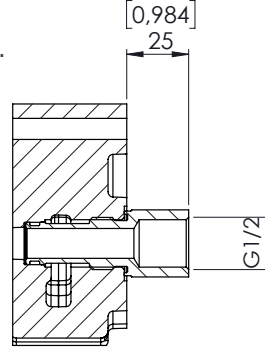
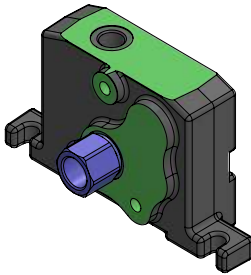
Please contact our sales department for other outlet options.  
Özel talepleriniz için lütfen Satış Departmanımızla bağlantıya geçin.

### Outlet with Carry-Over

#### Carry-Over

When Carry-Over is used for series connection with another valve, T3 or T1 of the first valve must be connected to the tank.

Carry-over kullanıldığında, 1.valfin tank hattı (T3 veya T1) mutlaka tanka bağlanmalıdır.



Port Thread

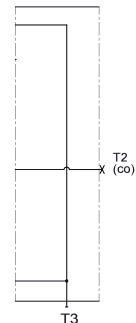
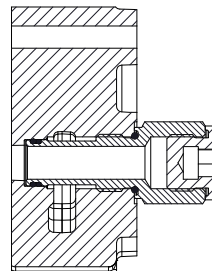
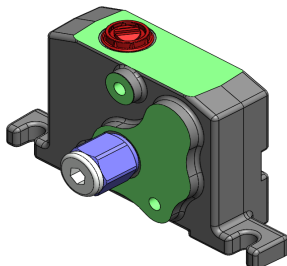
G 1/2"

Order Code

**B-H**

### Outlet with Closed Center Plug

#### Kapalı Merkez



Port Thread

G 1/2"

Order Code

**B-K**