

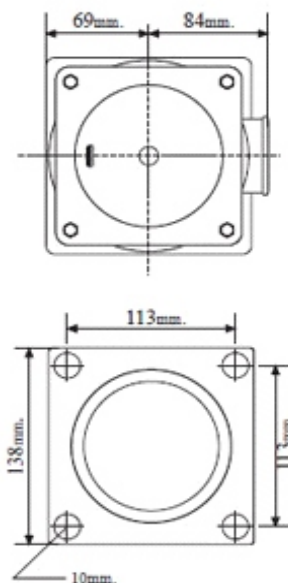
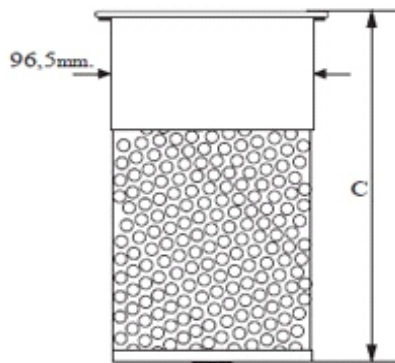
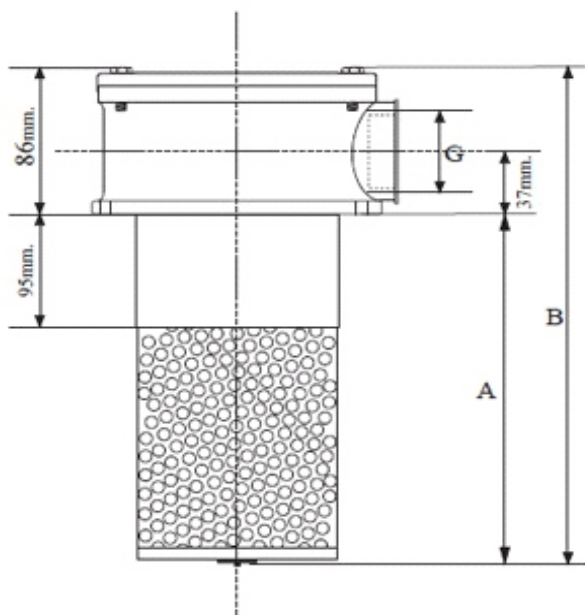


### CNC 40-50 SERIES HYDRAULIC FILTER



#### SPECIFIC VALUES

Construction	Aluminium head Nylon 6 sleeve
Sealing	Nitrile
Max.Working Pressure	10 bar
Operating Temperature	10°C~ +100°C
Fluid	Mineral oils
Nominal Flow Rate	260~480 lt/min.
Bypass Opening Pressure	1,5 bar ± 0,3 bar
Filtration Range	25 μ / 60 μ (Consult for different μ)
Connection	G1"-G11/4"-G11/2"
Filtration Efficiency	%98 for 25μ - %99 for 60μ





CODE	Nominal Flow (p 0,25) lt/min.	G	A	B	C
CNC40-25	260	1"	235	321	250
CNC40-60	340	1"	235	321	250
CNC41-25	260	1 1/4"	235	321	250
CNC41-60	340	1 1/4"	235	321	250
CNC43-25	260	1 1/2"	235	321	250
CNC43-60	340	1 1/2"	235	321	250
CNC50-25	360	1 1/4"	445	531	460
CNC50-60	480	1 1/4"	445	531	460
CNC51-25	360	1 1/2"	445	531	460
CNC51-60	480	1 1/2"	445	531	460

FILTER ELEMENT	Filtration Range	Filtration Surface cm2
CNE40-25	25μ	3900
CNE40-60	60μ	2250
CNE40-25	25μ	3900
CNE40-60	60μ	2250
CNE40-25	25μ	3900
CNE40-60	60μ	2250
CNE50-25	25μ	7700
CNE50-60	60μ	4600
CNE50-25	25μ	7700
CNE50-60	60μ	4600