

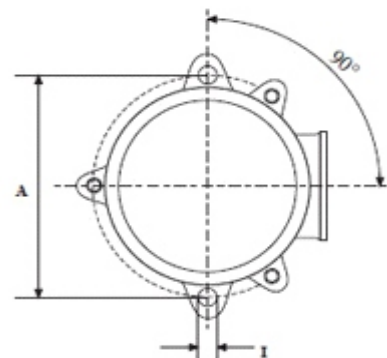
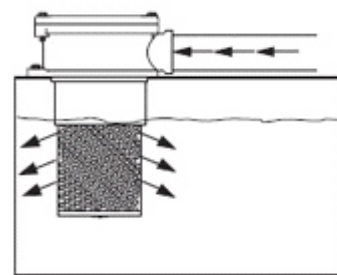
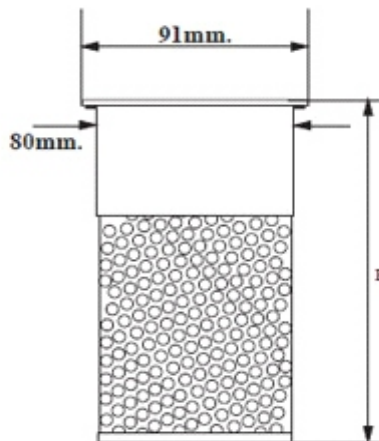
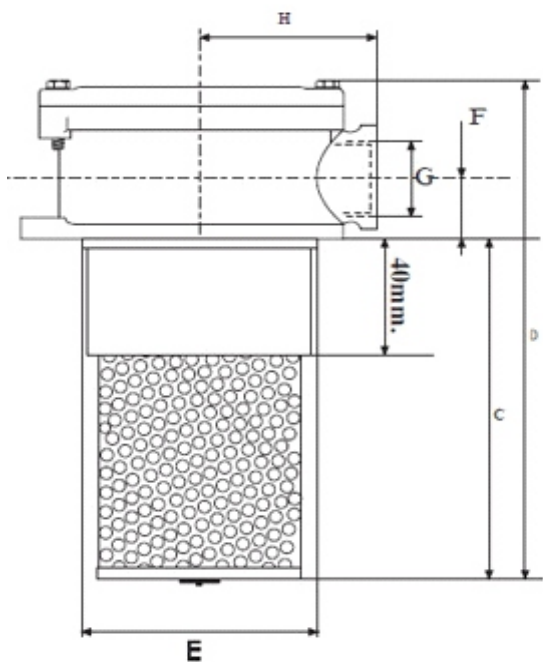


CNC 30 SERIES HYDRAULIC FILTER



SPECIFIC VALUES

Construction	Aluminium head Nylon 66 half sleeve
Sealing	Nitrile
Max. Working Pressure	12 bar
Operation Pressure	-10°C~ +100°C
Fluid	Mineral oils
Nominal Flow Rate	80~220 lt/min.
Bypass Opening Pressure	1,5 bar ± 0,3 bar
Filtration Range	25 μ / 60 μ (Consult for different μ)
Connection	G1/2"-G3/4"-G1"
Filtration Efficiency	%98 for 25μ - %99 for 60μ





CODE	Nominal Flow (p 0,25) lt/min.	G	A	B	C	D	E	F	H	I
CNC30-25	80	1/2"	115	100	85	155	87	30	66	9
CNC30-60	120	1/2"	115	100	85	155	87	30	66	9
CNC31-25	80	3/4"	115	100	85	155	87	30	66	9
CNC31-60	120	3/4"	115	100	85	155	87	30	66	9
CNC32-25	150	3/4"	115	130	115	185	87	30	66	9
CNC32-60	190	3/4"	115	130	115	185	87	30	66	9
CNC34-25	150	1"	115	130	115	185	87	30	66	9
CNC34-60	190	1"	115	130	115	185	87	30	66	9
CNC36-25	180	3/4"	115	180	165	235	87	30	66	9
CNC36-60	220	3/4"	115	180	165	235	87	30	66	9
CNC38-25	180	1"	115	180	165	235	87	30	66	9
CNC38-60	220	1"	115	180	165	235	87	30	66	9

FILTER ELEMENT	Filtration Range	Filtration Surface cm
CNE310-25	25μ	1320
CNE310-60	60μ	810
CNE310-25	25μ	1320
CNE310-60	60μ	810
CNE313-25	25μ	1780
CNE313-60	60μ	1100
CNE313-25	25μ	1780
CNE313-60	60μ	1100
CNE318-25	25μ	2400
CNE318-60	60μ	1550
CNE318-25	25μ	2400
CNE318-60	60μ	1550