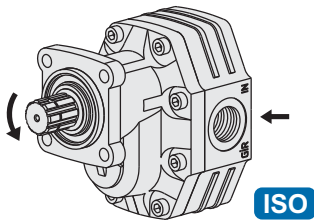
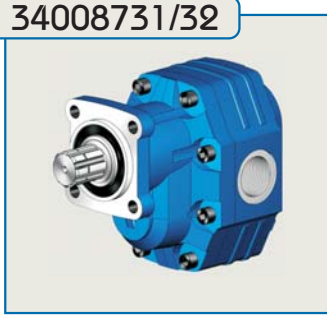
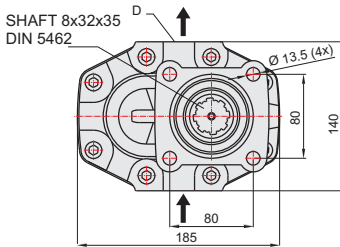
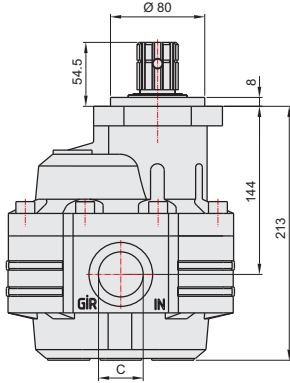


## 87 LİTRE DİŞLİ POMPA / 87 cc GEAR PUMP

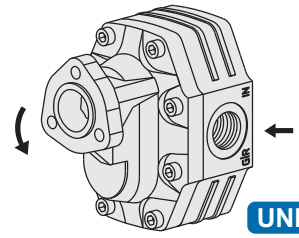
34008731/32



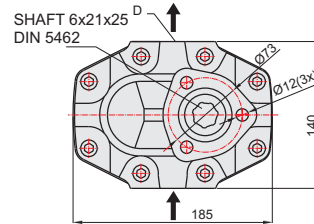
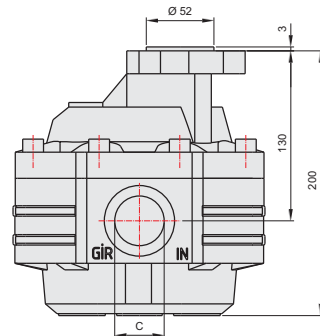
ISO



34008711/12

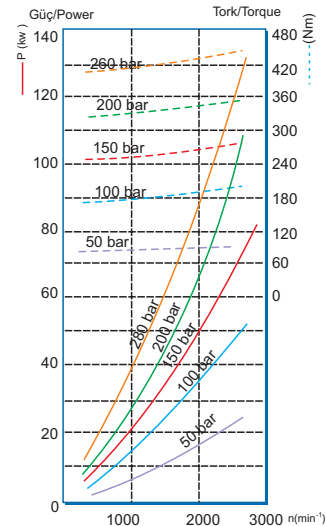


UNI



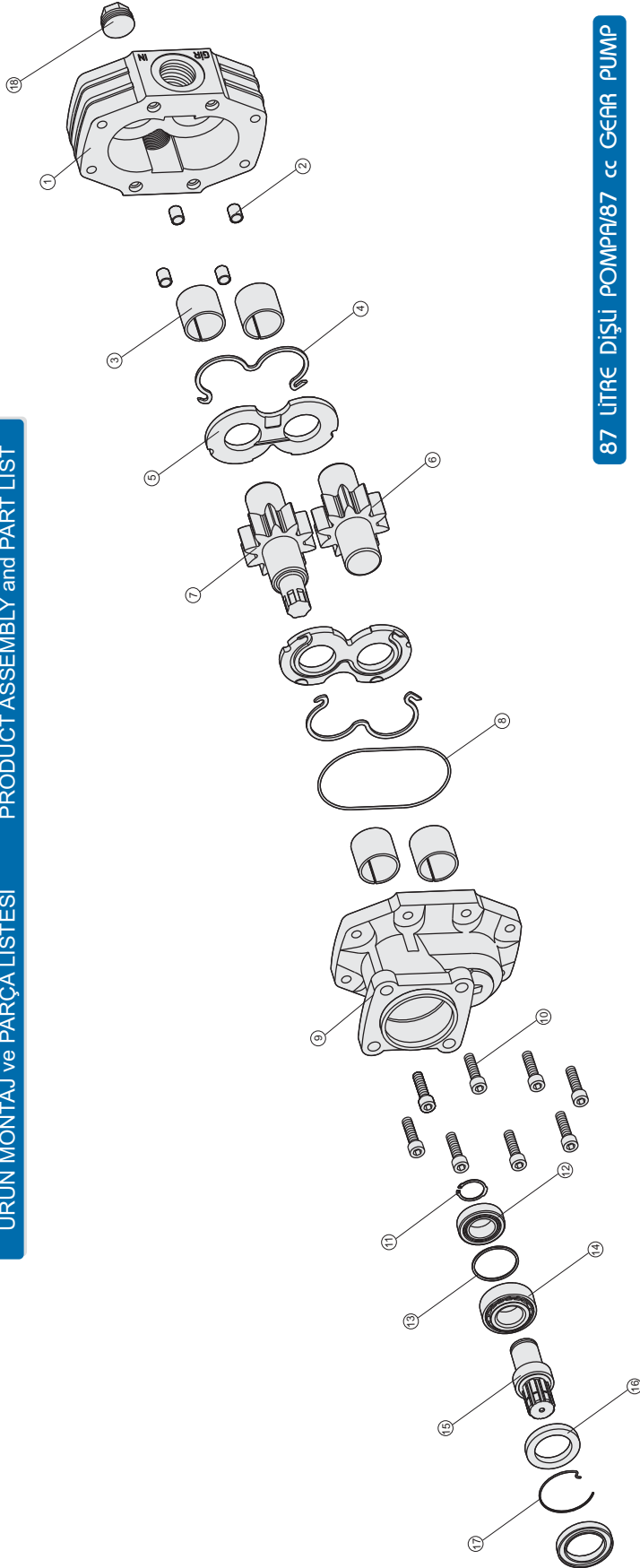
### GENEL BİLGİLER/GENERAL DATA

Pompa Kodu Pump Codes	ISO 34008731/32	UNI 34008711/12
Pompa Tipi / Pump Type	40-87	40-87
Min. Boru Çapı / Min. Hose Dia.	33	33
Ağırlık / Weight(kg)	17,3	17
(C) Yağ Giriş / Oil Inlet	R 1 1/4"	R 1 1/4"
(D) Yağ Çıkış / Oil Outlet	R 1"	R 1"
Akışkan Fluid	Mineral Bazlı Hidrolik Yağ Mineral based hydraulic oil	



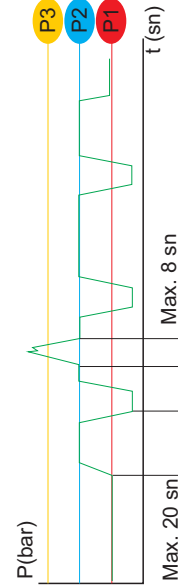
## ÜRÜN MONTAJ ve PARÇA LİSTESİ

## PRODUCT ASSEMBLY and PART LIST



## 87 LİTRE DİŞLİ POMPA/87 cc GEAR PUMP

Adet	Parça No	Parça Adı	Kod
1	1	Gövde	34008731-01
4	2	Merkez Burcu	34008731-02
4	3	38x38 Burç	34008731-03
2	4	M O-ring	34008731-04
2	5	Alüminyum Plate	34008731-05
1	6	Kısa Dişli	34008731-06
1	7	Uzun Dişli	34008731-07
1	8	2.62x118 O-ring	34008731-08
1	9	Dpa Kapak	33008731-09
1	19	Dpa Kapak	34008711-19
8	10	M12x45 Cıvata	34008731-10
1	11	471-35 Segman	34008731-11
1	12	32007 Rulman	34008731-12
1	13	56x62x2 Pul	34008731-13
1	14	32207 Rulman	34008731-14
1	15	Dpa Mili	34008731-15
2	16	50x72x7 Kece	34008731-16
1	17	Tel Segman	34008731-17
1	18	1" Tapa	34008731-18
35	TOPLAM PARÇA SAYISI		



İdeal yağ sıcaklığı Ideal oil temp.	50° / 60°C	Maksimum sıcaklık Maximum temp.	0° / 80°C
--	------------	------------------------------------	-----------

## GENEL BİLGİLER/GENERAL DATA

Pompa Tipi Pump Type	Debi Displacement	Max. Sürekli Hız Max. Continuous Speed	Min. Kesik Hız Min. Intermitt. Speed	Max. Kesik Hız Max. Intermitt. Speed	Max. Kesik Basıncı Max. Continuous Pressure	Max. Sürekli Basıncı Max. Intermitt. Pressure	Max. Ani Basıncı Max. Peak Pressure	Ağırlık Weight
43-87	lt/dk(gpm)	n(min <sup>-1</sup> )	n(min <sup>-1</sup> )	n(min <sup>-1</sup> )	bar (psi)	bar (psi)	bar (psi)	kg(lb) Pound
	85.50/18.80	1500	300	3500	250/3626	280/4062	375/5439	17.30/46.30