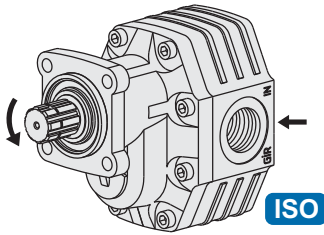


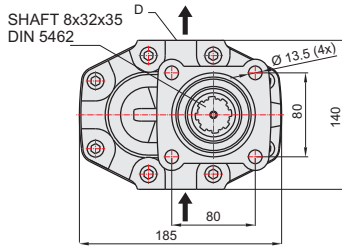
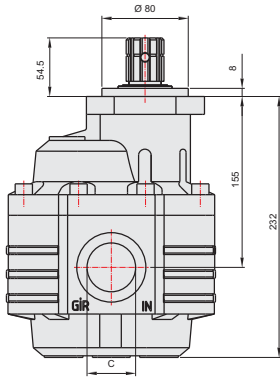
## 151 LİTRE DİŞLİ POMPA

## 151 cc GEAR PUMP

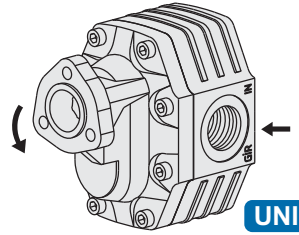
34015131/32



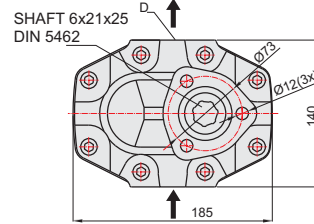
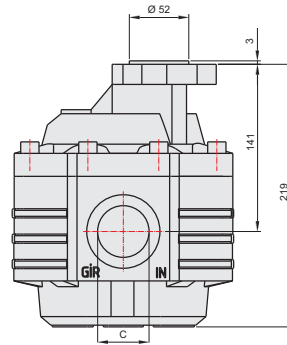
ISO



34015111/12

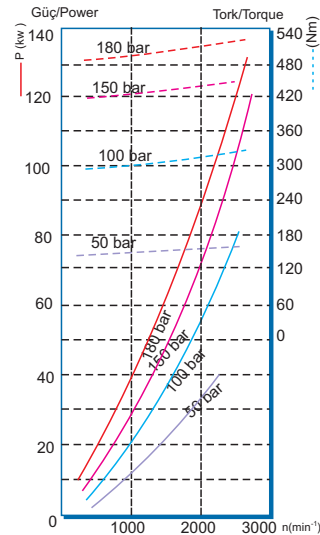


UNI



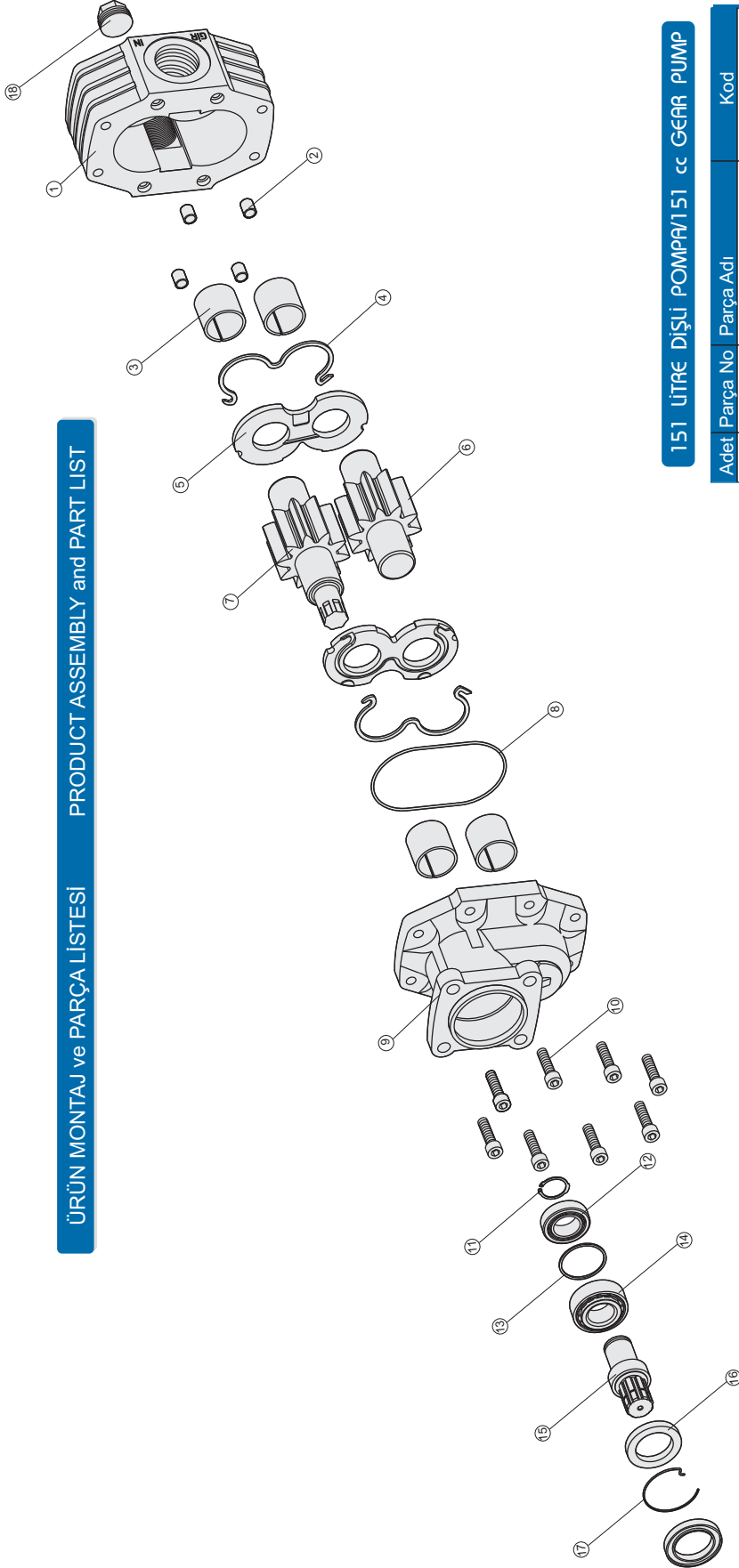
### GENEL BİLGİLER/GENERAL DATA

Pompa Kodu Pump Codes	ISO 34015131/32	UNI 34015111/12
Pompa Tipi / Pump Type	40-151	40-151
Min. Boru Çapı / Min. Hose Dia.	38	38
Ağırlık / Weight(kg)	20,3	20
(C) Yağ Giriş / Oil Inlet	R 1 1/2"	R 1 1/2"
(D) Yağ Çıkış / Oil Outlet	R 1"	R 1"
Akışkan Fluid	Mineral Bazlı Hidrolik Yağ Mineral based hydraulic oil	



## ÜRÜN MONTAJ ve PARÇA LİSTESİ

## PRODUCT ASSEMBLY and PART LIST

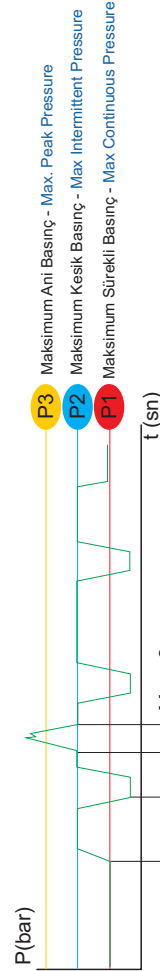


151 LİTRE DIŞLI POMPA

151 cc GEAR PUMP

## 151 LİTRE DIŞLI POMPA/151 cc GEAR PUMP

Adet	Parça No	Parça Adı	Kod
1	1	Gövde	34015131-01
4	2	Merkez Burcu	34015131-02
4	3	38x38 Burç	34015131-03
2	4	M O-ring	34015131-04
2	5	Alüminyum Plate	34015131-05
1	6	Kısa Dişli	34015131-06
1	7	Uzun Dişli	34015131-07
1	8	2.62x118 O-ring	34015131-08
1	9	Dpa Kapak	33015131-09
1	19	Dp Kapak	34015111-19
8	10	M12x45 Civata	34015131-10
1	11	471-35 Segman	34015131-11
1	12	32007 Rulman	34015131-12
1	13	56x62x2 Pul	34015131-13
1	14	32207 Rulman	34015131-14
1	15	Dpa Mili	34015131-15
2	16	50x72x7 Kece	34015131-16
1	17	Tel Segman	34015131-17
1	18	1" Tapa	34015131-18
35	TOPLAM PARÇA SAYISI		



İdeal yağ sıcaklığı Ideal oil temp.	50° /60°C	Maksimum sıcaklık Maximum temp.	0° /80°C
--	-----------	------------------------------------	----------

## GENEL BİLGİLER/GENERAL DATA

Pompa Tipi Pump Type	Debi Displacement	Max. Sürekli Hız Max. Continuous Speed	Min. Kesik Hız Min. Intermitt. Speed	Max. Kesik Hız Max. Intermitt. Speed	Max. Sürekli Basınç Max. Continuous Pressure	Max. Kesik Basınç Max. Intermitt. Pressure	Max. Ani Basınç Max. Peak Pressure	Ağırlık Weight
40-151	lt/dk(gpm)	n(min <sup>-1</sup> )	n(min <sup>-1</sup> )	n(min <sup>-1</sup> )	bar (psi)	bar (psi)	bar (psi)	kg(lb)
	148,90/32,60	1500	250	3000	180/2610	180/2611	270/3916	20,30/54,40