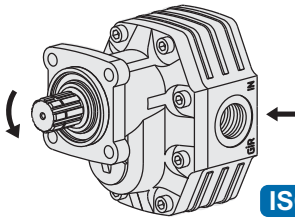
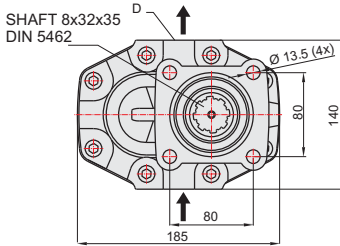
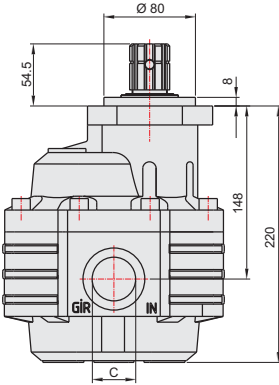


109 LİTRE DİŞLİ POMPA / 109 cc GEAR PUMP

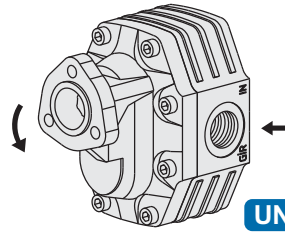
34010931/32



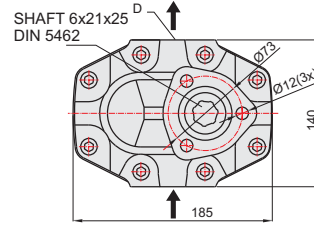
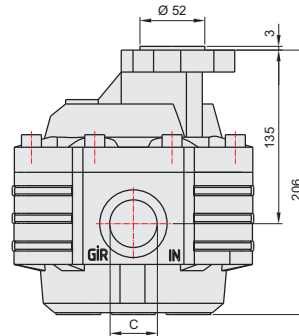
ISO



34010911/12

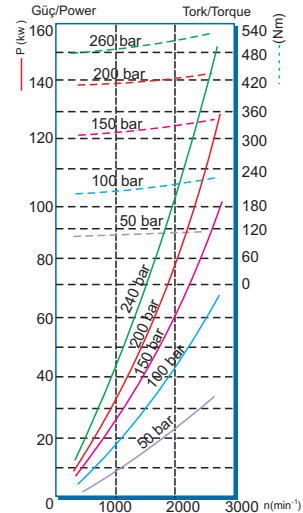


UNI



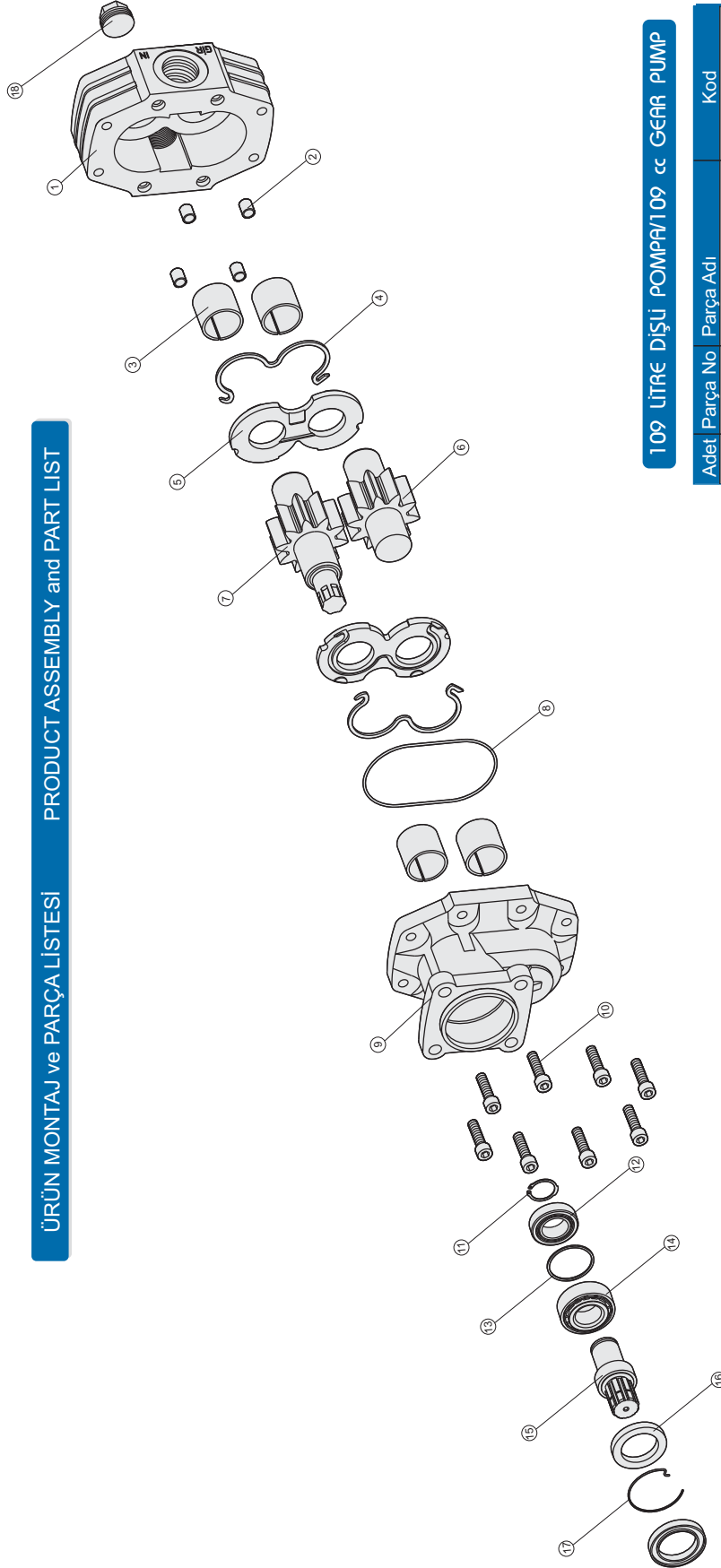
GENEL BİLGİLER/GENERAL DATA

Pompa Kodu Pump Codes	ISO 34010931/32	UNI 34010911/12
Pompa Tipi / Pump Type	40-109	40-109
Min. Boru Çapı / Min. Hose Dia.	33	33
Ağırlık / Weight(kg)	18,5	18
(C) Yağ Giriş / Oil Inlet	R 1 1/4"	R 1 1/4"
(D) Yağ Çıkış / Oil Outlet	R 1"	R 1"
Akışkan Fluid	Mineral Bazlı Hidrolik Yağ Mineral based hydraulic oil	



ÜRÜN MONTAJ ve PARÇA LİSTESİ

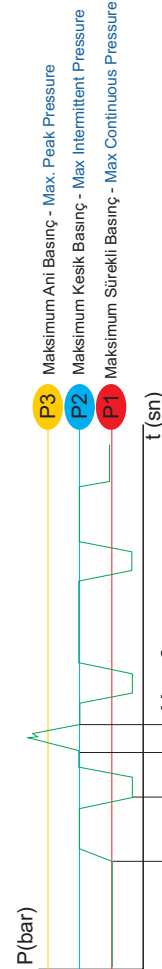
PRODUCT ASSEMBLY and PART LIST



109 LİTRE DİŞLİ POMPA / 109 cc GEAR PUMP

109 LİTRE DİŞLİ POMPA/109 cc GEAR PUMP

Adet	Parça No	Parça Adı	Kod
1	1	Gövde	34010931-01
4	2	Merkez Burcu	34010931-02
4	3	38x38 Burç	34010931-03
2	4	M O-ring	34010931-04
2	5	Alüminyum Plate	34010931-05
1	6	Kısa Dişli	34010931-06
1	7	Uzun Dişli	34010931-07
1	8	2.62x118 O-ring	34010931-08
1	9	Dpa Kapak	33010931-09
1	19	Dp Kapak	34010911-19
8	10	M12x45 Cıvata	34010931-10
1	11	471-35 Segman	34010931-11
1	12	32007 Rulman	34010931-12
1	13	56x62x2 Pul	34010931-13
1	14	32207 Rulman	34010931-14
1	15	Dpa Mili	34010931-15
2	16	50x72x7 Kece	34010931-16
1	17	Tel Segman	34010931-17
1	18	1" Tapa	34010931-18
35	TOPLAM PARÇA SAYISI		



İdeal yağ sıcaklığı İdeal oil temp.	50° / 60°C	Maksimum sıcaklık Maximum temp.	0° / 80°C
--	------------	------------------------------------	-----------

GENEL BİLGİLER/GENERAL DATA

Pompa Tipi Pump Type	Debi Displacement	Min. Sürekli Hız Min. Continuous Speed	Max. Sürekli Hız Max. Continuous Speed	Min. Kesik Hız Min. Intermitt. Speed	Max. Kesik Hız Max. Intermitt. Speed	Max. Sürekli Basınç Max. Continuous Pressure	Max. Kesik Basınç Max. Intermitt. Pressure	Max. Ani Basınç Max. Peak Pressure	Ağırlık Weight
40-109	107.60/23.70	n(min ⁻¹) 1500	n(min ⁻¹) 3500	n(min ⁻¹) 250	n(min ⁻¹) 3500	bar (psi) 250/3626	bar (psi) 270/3916	bar (psi) 375/5439	kg(lb) Pound 18.50/49.60