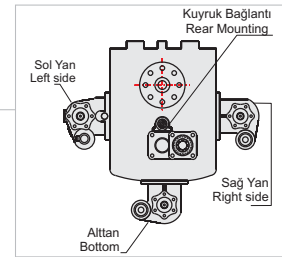
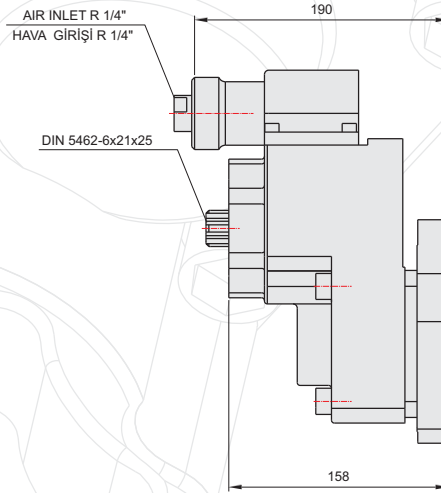
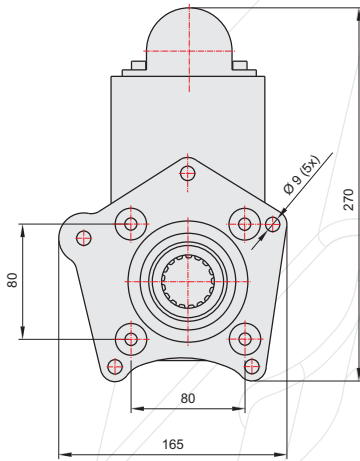
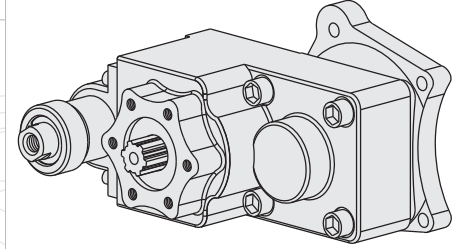
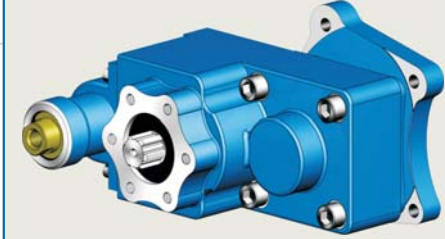


50120311



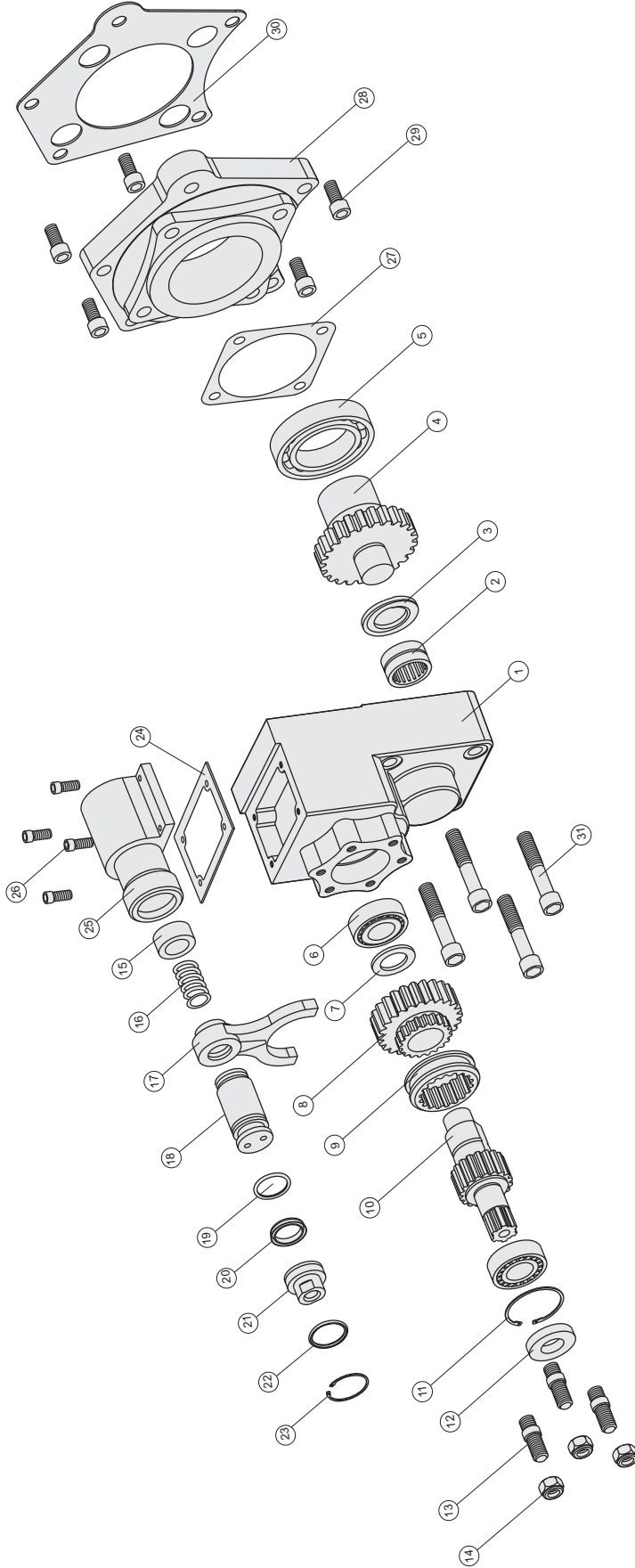
## GENEL BİLGİLER/GENERAL DATA

P.T.O. KODU / P.T.O. CODE	50120311	
Tork / Torque	22,4 Kgm	219,7 Nm
Güç(1000 rpm) / Power	18,5 Hp	13,8 Kw
Devir / Speed	600 rpm	600 rpm
Oran / Ratio	1/1,12	1/1,12
Ağırlık / Weight	11 kg	24,3 lb
Bağlantı / Mounting	Kuyruk	Rear
Kumanda / Control	Havali	Pneumatic
Dönüş / P.T.O. Rotation	Sol - UNI	Left - UNI

Ana Şanzıman / Gearbox	Kullanılan Bazı Araçlar / Used Vehicles
G3 / 32,36,40,45,50,55,60,61	315-352-362-383-609-710-712-809-812-813-814-817-913-1017-1113-114-1213-1216-1318-1618

Seçeğiniz pompanın dönüş yönü, P.T.O. dönüş yönü ile ters olmalıdır.  
The rotation of the chosen pump has to be opposite with the rotation of P.T.O.

P.T.O. montaj edildikten sonra ana şanzıman yağını tamamlayın.  
Fill the oil of the gear box after mounting the P.T.O.

**ÜRÜN MONTAJ ve PARÇA LİSTESİ**  
**PRODUCT ASSEMBLY and PART LIST**

**MERCEDES 352-2**

Adet	Parça No	Parça Adı	Kod
1	1	Gövde	50120311 -01
1	2	NK 30/20 Rulman	50120311 -02
1	3	31x52x4 Bronz Pul	50120311 -03
1	4	Grup Dişlisi	50120311 -04
1	5	6011 Rulman	50120311 -05
2	6	Nj 205 Rulman	50120311 -06
1	7	25.5x39.5x3 Pul	50120311 -07
1	8	Küçük Dişli	50120311 -08
1	9	Senkromeç	50120311 -09
1	10	6x18 Alt Mil	50120311 -10
1	11	472-52 Segman	50120311 -11
1	12	25x52x10 Keçe	50120311 -12
3	13	M10x45 Saplama	50120311 -13
3	14	M10 Somun	50120311 -14
1	15	25x35x15 Ortalama Pul	50120311 -15
1	16	Phomatik Yay	50120311 -16

Adet	Parça No	Parça Adı	Kod
1	17	Hilal	50120311 -17
1	18	Phomatik Piston	50120311 -18
1	19	3x27 O-ring	50120311 -19
1	20	33x25x5.5 Nutring	50120311 -20
1	21	Phomatik Kapak	50120311 -21
1	22	29.75x3.53 O-ring	50120311 -22
1	23	472-36 Segman	50120311 -23
1	24	Phomatik Kovan Contası	50120311 -24
1	25	Phomatik Kovan	50120311 -25
4	26	M6x20 Cıvata	50120311 -26
1	27	Conta	50120311 -27
1	28	352- Plate	50120311 -28
5	29	M10x25 Cıvata	50120311 -29
1	30	352 Canta	50120311 -30
4	31	M12x65 Cıvata	50120311 -31
43		TOPLAM PARÇA SAYISI	