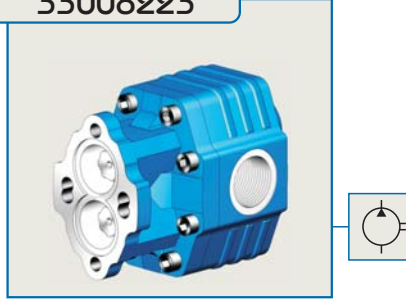


82 LİTRE DİŞLİ POMPA / 82 cc GEAR PUMP

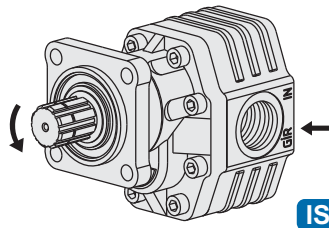
33008231/32



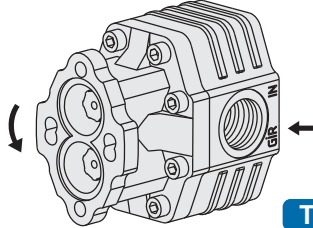
33008223



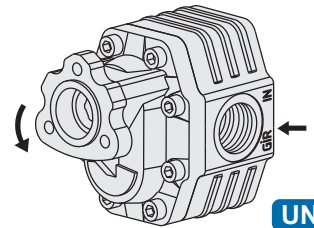
33008211/12



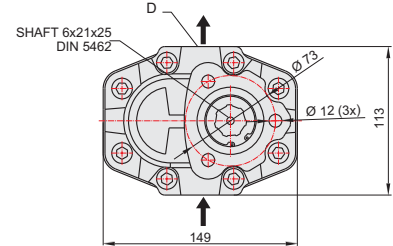
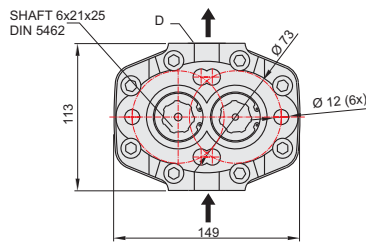
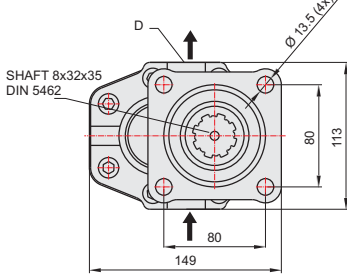
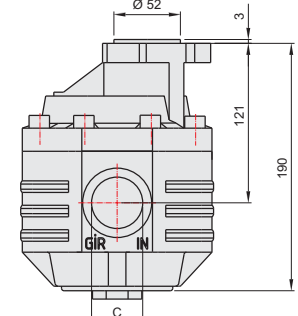
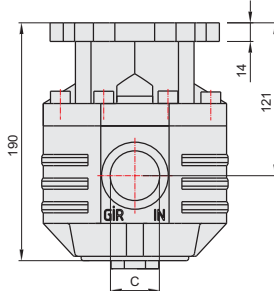
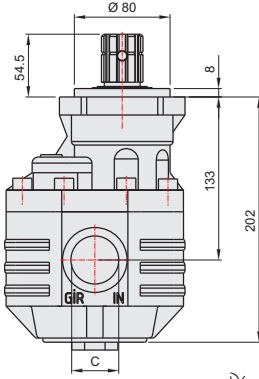
ISO



T2

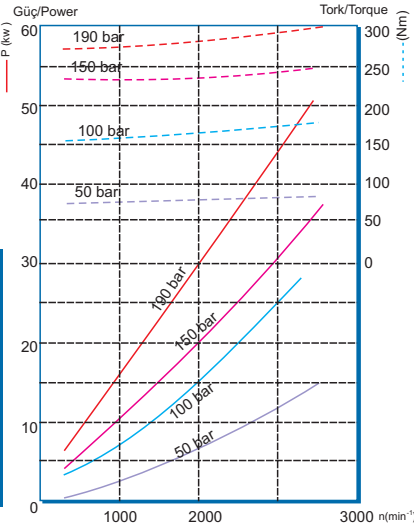


UNI



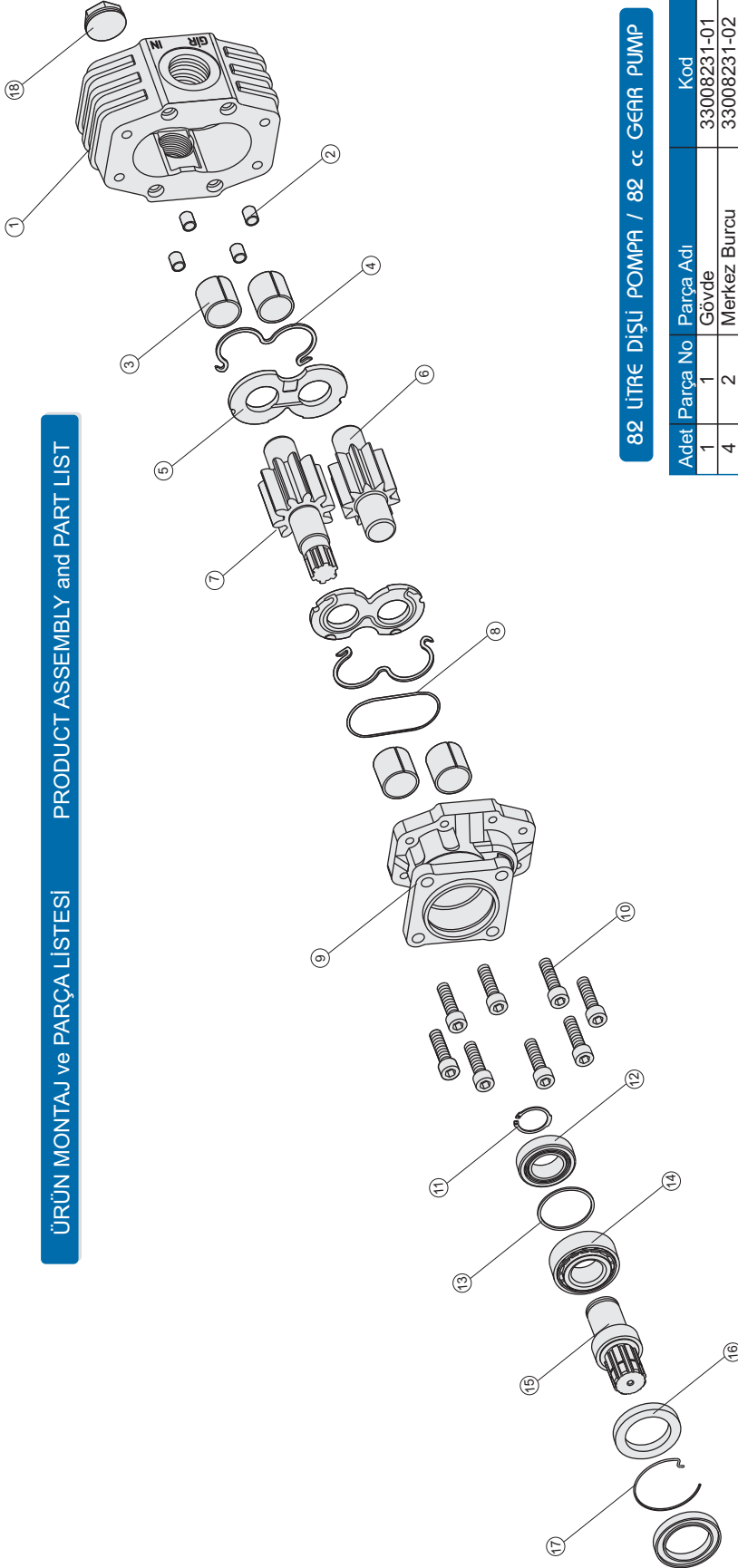
GENEL BİLGİLER/GENERAL DATA

Pompa Kodu Pump Codes	ISO 33008231/32	T2 33008223	UNI 33008211/12
Pompa Tipi / Pump Type	30-82	30-82	30-82
Min. Boru Çapı / Min. Hose Dia.	33	33	33
Ağırlık / Weight(kg)	13,8	12	11,6
(C) Yağ Giriş / Oil Inlet	R 1 1/4"	R 1 1/4"	R 1 1/4"
(D) Yağ Çıkış / Oil Outlet	R 1"	R 1"	R 1"
Akışkan Fluid	Mineral Bazlı Hidrolik Yağ Mineral based hydraulic oil		



ÜRÜN MONTAJ ve PARÇA LİSTESİ

PRODUCT ASSEMBLY and PART LIST

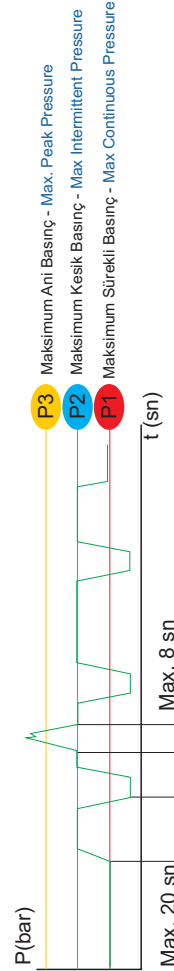


82 LİTRE DİŞLİ POMPA

82 cc GEAR PUMP

82 LİTRE DİŞLİ POMPA / 82 cc GEAR PUMP

Adet	Parça No	Parça Adı	Kod
1	1	Gövde	33008231-01
4	2	Merkez Burcu	33008231-02
4	3	28x32x30 Burç	33008231-03
2	4	M O-ring	33008231-04
2	5	Alüminyum Plate	33008231-05
1	6	Kısa Dişli	33008231-06
1	7	Uzun Dişli	33008231-07
1	8	1.78x98.05 O-ring	33008231-08
1	9	Dpa Kapak	33008231-09
1	19	T1 Kapak	33008211-19
1	20	T2 Kapak	33008223-20
8	10	M10x40 Civata	33008231-10
1	11	471-35 Segman	33008231-11
1	12	32007 Rulman	33008231-12
1	13	56x62x2 Pul	33008231-13
1	14	32207 Rulman	33008231-14
1	15	Dpa Mili	33008231-15
2	16	50x72x7 Kece	33008231-16
1	17	Tel Segman	33008231-17
1	18	1" Tapa	33008231-18
36	TOPLAM PARÇA SAYISI		



İdeal yağ sıcaklığı Ideal oil temp.	50° /60°C	Maksimum sıcaklık Maximum temp.	0° /80°C
--	-----------	------------------------------------	----------

GENEL BİLGİLER/GENERAL DATA

Pompa Tipi Pump Type	Debi Displacement	Max. Sürekli Hız Max. Continuous Speed	Min. Kesik Hız Min. Intermitt. Speed	Max. Kesik Hız Max. Intermitt. Speed	Max. Sürekli Basınç Max. Continuous Pressure	Max. Kesik Basınç Max. Intermitt. Pressure	Max. Anı Basınç Max. Peak Pressure	Ağırlık Weight
30-82	81.00/17.80 lt/dk(gpm)	1500 n(min ⁻¹)	300 n(min ⁻¹)	3000 n(min ⁻¹)	210/3046 bar (psi)	230/3336 bar (psi)	300/4351 bar (psi)	13.80/37.00 kg(lb) Pound