

## 61 LİTRE DİŞLİ POMPA / 61 cc GEAR PUMP

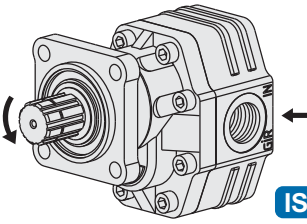
33006131/32



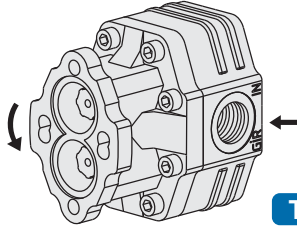
33006123



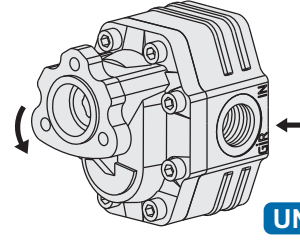
33006111/12



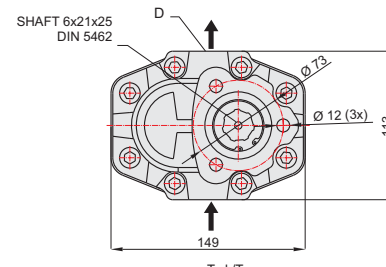
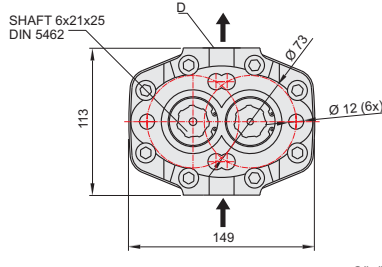
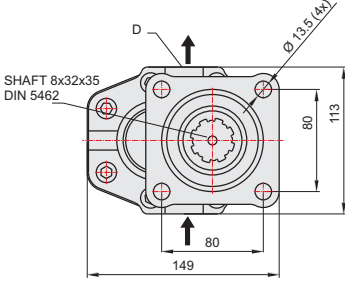
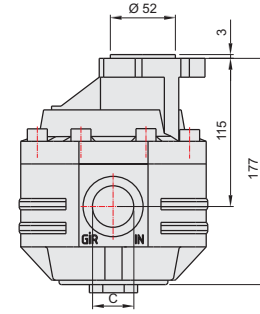
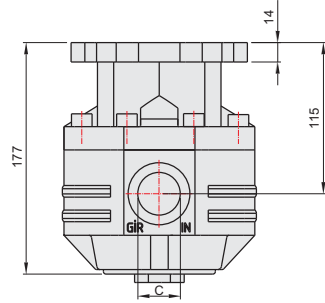
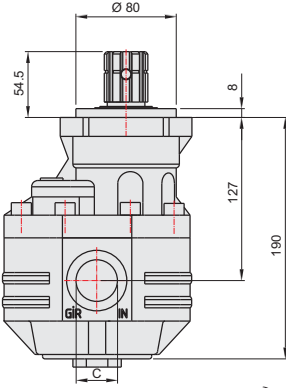
ISO



T2

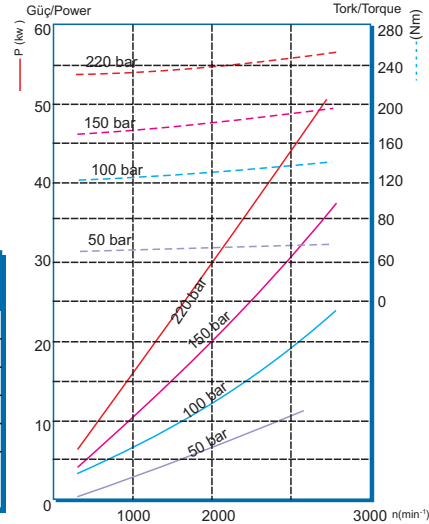


UNI



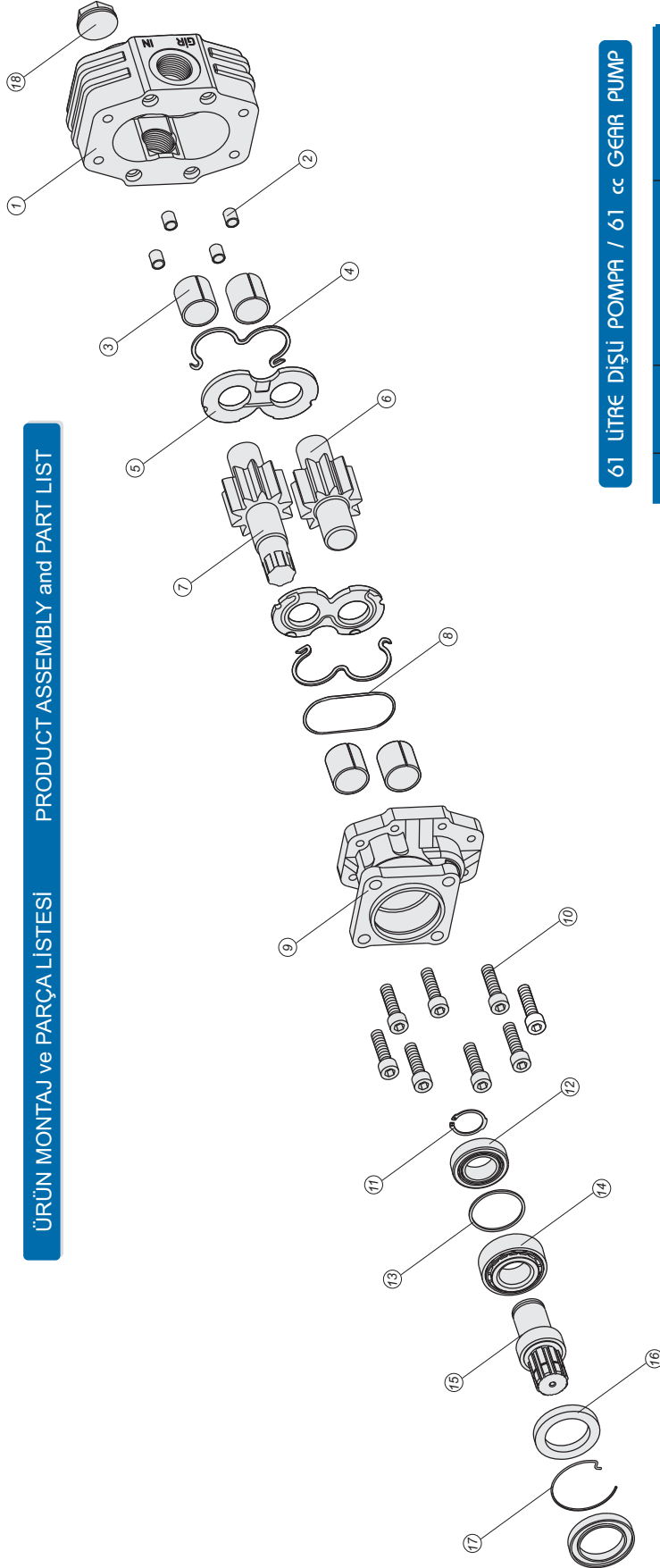
### GENEL BİLGİLER/GENERAL DATA

| Pompa Kodu<br>Pump Codes        | ISO<br>33006131/32  | T2<br>33006123 | UNI<br>33006111/12 |
|---------------------------------|---|----------------|--------------------|
| Pompa Tipi / Pump Type          | 30-61   | 30-61          | 30-61              |
| Min. Boru Çapı / Min. Hose Dia. | 26  | 26             | 26                 |
| Ağırlık / Weight(kg)            | 13  | 11,3           | 11                 |
| (C) Yağ Giriş / Oil Inlet       | R 1"  | R 1"           | R 1"               |
| (D) Yağ Çıkış / Oil Outlet      | R 1"  | R 1"           | R 1"               |
| Akışkan<br>Fluid                | Mineral Bazlı Hidrolik Yağ<br>Mineral based hydraulic oil |                |                    |



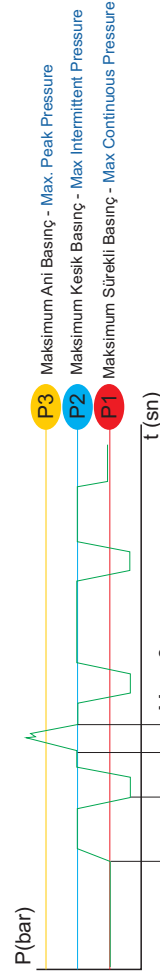
## ÜRÜN MONTAJ ve PARÇA LİSTESİ

## PRODUCT ASSEMBLY and PART LIST



## 61 LİTRE DİŞLİ POMPA / 61 cc GEAR PUMP

| Adet | Parça No | Parça Adı           | Kod         |
|------|----------|---------------------|-------------|
| 1    | 1        | Gövde               | 33006131-01 |
| 4    | 2        | Merkez Burcu        | 33006131-02 |
| 4    | 3        | 28x32x30 Burç       | 33006131-03 |
| 2    | 4        | M O-ring            | 33006131-04 |
| 2    | 5        | Alüminyum Plate     | 33006131-05 |
| 1    | 6        | Kısa Dişli          | 33006131-06 |
| 1    | 7        | Uzun Dişli          | 33006131-07 |
| 1    | 8        | 1.78x98.05 O-ring   | 33006131-08 |
| 1    | 9        | Dpa Kapak           | 33006131-09 |
| 1    | 19       | T1 Kapak            | 33006111-19 |
| 1    | 20       | T2 Kapak            | 33006123-20 |
| 8    | 10       | M10x40 Cıvata       | 33006131-10 |
| 1    | 11       | 471-35 Segman       | 33006131-11 |
| 1    | 12       | 32007 Rulman        | 33006131-12 |
| 1    | 13       | 56x62x2 Pul         | 33006131-13 |
| 1    | 14       | 32207 Rulman        | 33006131-14 |
| 1    | 15       | Dpa Mili            | 33006131-15 |
| 2    | 16       | 50x72x7 Keçe        | 33006131-16 |
| 1    | 17       | Tel Segman          | 33006131-17 |
| 1    | 18       | 1" Tapa             | 33006131-18 |
| 36   |          | TOPLAM PARÇA SAYISI |             |



| İdeal yağ sıcaklığı<br>Ideal oil temp. | 50° /60°C | Maksimum sıcaklık<br>Maximum temp. | 0° /80°C |
|--|-----------|------------------------------------|----------|
|--|-----------|------------------------------------|----------|

## GENEL BİLGİLER/GENERAL DATA

| Pompa Tipi<br>Pump Type | Debi<br>Displacement | Min. Sürekli Hız<br>Min. Continuous Speed | Max. Sürekli Hız<br>Max. Continuous Speed | Min. Kesik Hız<br>Min. Intermitt. Speed | Max. Kesik Hız<br>Max. Intermitt. Speed | Max. Sürekli Basınç<br>Max. Continuous Pressure | Max. Kesik Basınç<br>Max. Intermitt. Pressure | Max. Ani Basınç<br>Max. Peak Pressure | Ağırlık<br>Weight |
|-------------------------|----------------------|---|---|---|---|---|---|---------------------------------------|-------------------|
| 30-61                   | lt/dk(gpm)           | n(min <sup>-1</sup> )                     | n(min <sup>-1</sup> )                     | n(min <sup>-1</sup> )                   | n(min <sup>-1</sup> )                   | bar (psi)                                       | bar (psi)                                     | bar (psi)                             | kg(lb)            |
|                         | 60.80/13.40          | 1800                                      | 300                                       | 3500                                    | 240/3481                                | 220/3191  | 350/5076                                      | 13.00/34.80                           |                   |