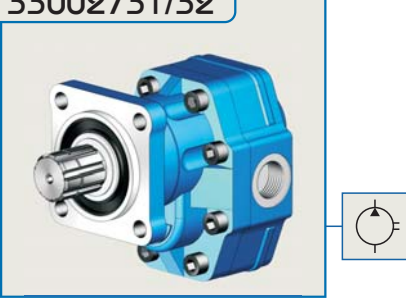
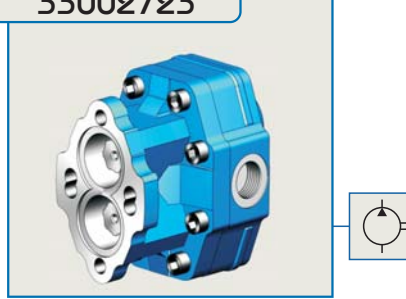


27 LİTRE DİŞLİ POMPA / 27 cc GEAR PUMP

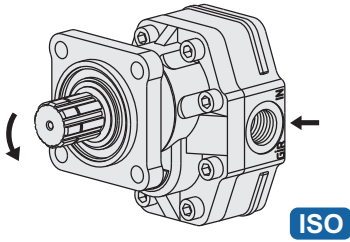
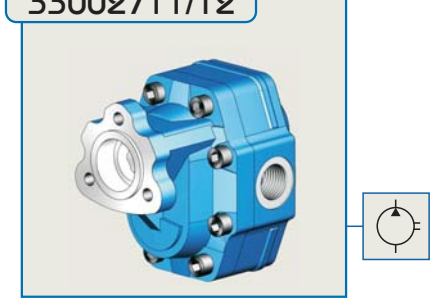
33002731/32



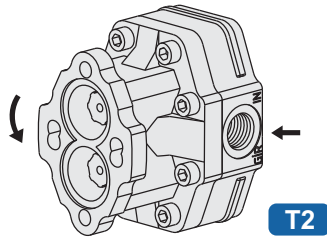
33002723



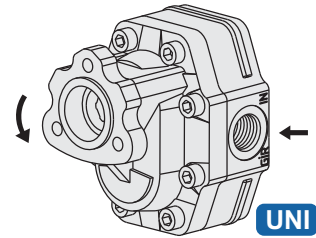
33002711/12



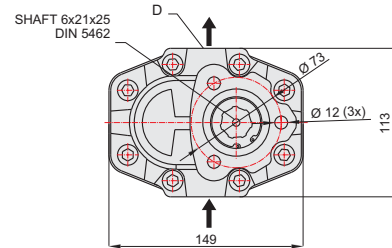
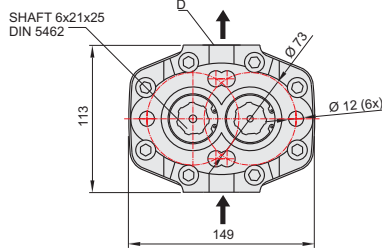
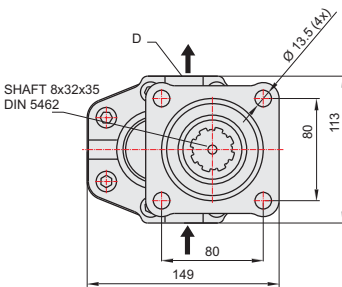
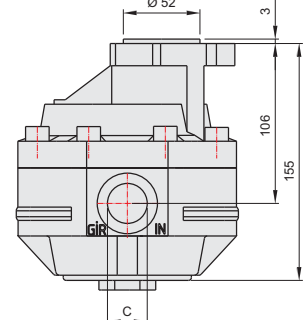
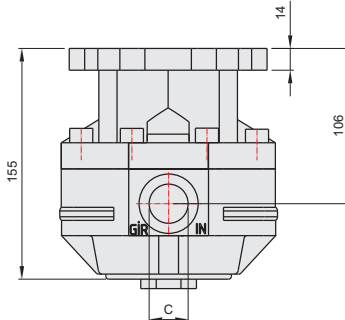
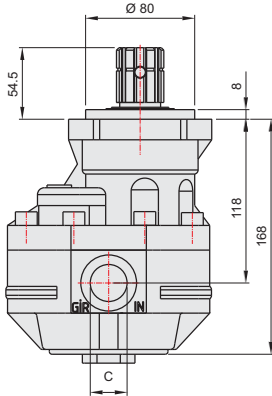
ISO



T2

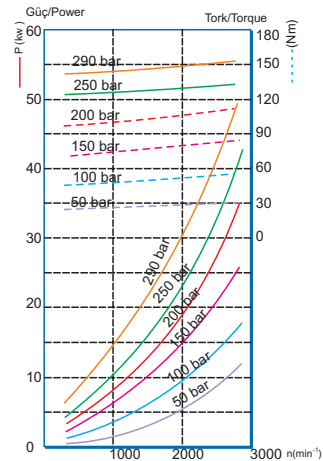


UNI



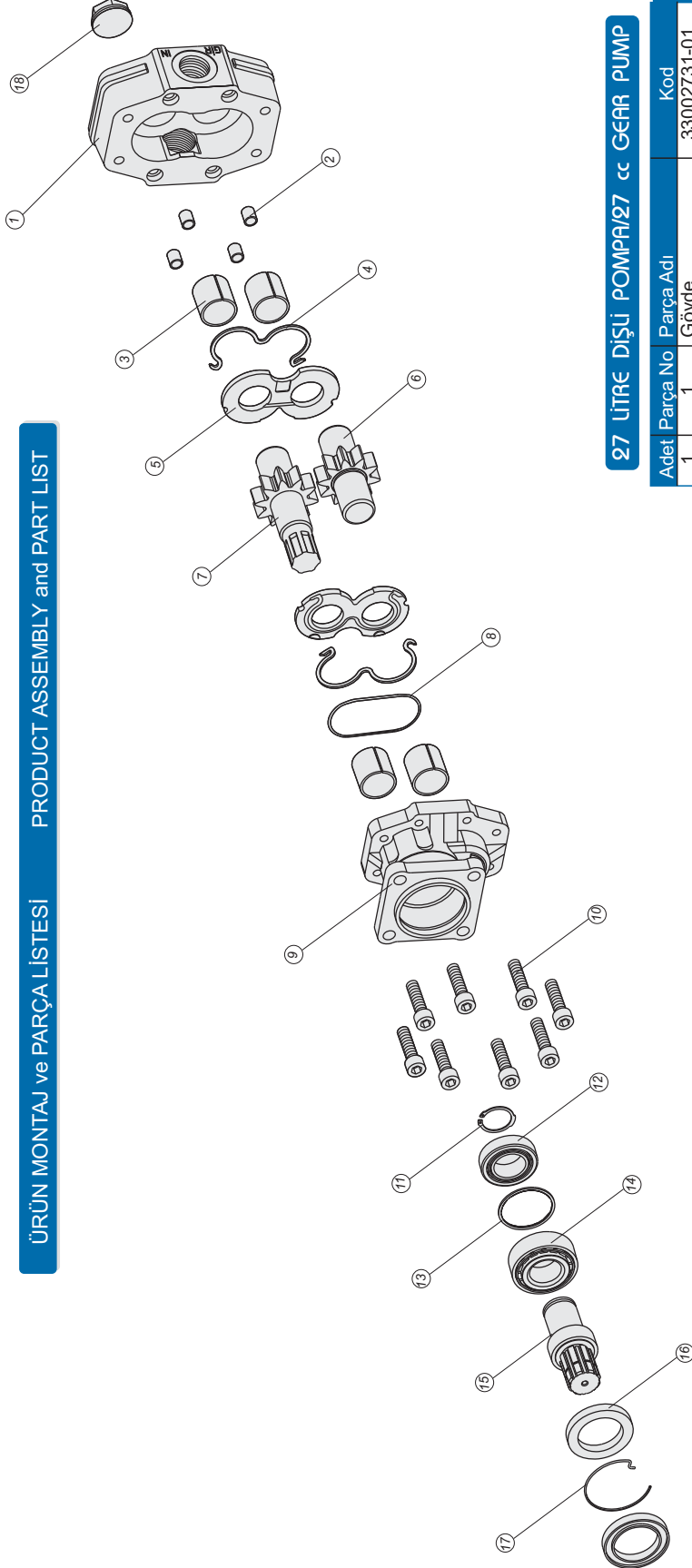
GENEL BİLGİLER/GENERAL DATA

Pompa Kodu Pump Codes	ISO 33002731/32	T2 33002723	UNI 33002711/12
Pompa Tipi / Pump Type	30-27	30-27	30-27
Min. Boru Çapı / Min. Hose Dia.	20	20	20
Ağırlık / Weight(kg)	11	9,5	9
(C) Yağ Giriş - Oil Inlet	R 3/4"	R 3/4"	R 3/4"
(D) Yağ Çıkış - Oil Outlet	R 3/4"	R 3/4"	R 3/4"
Akışkan Fluid	Mineral Bazlı Hidrolik Yağ Mineral based hydraulic oil		



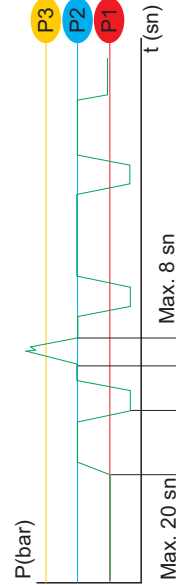
ÜRÜN MONTAJ ve PARÇA LİSTESİ

PRODUCT ASSEMBLY and PART LIST



27 LİTRE DİŞLİ POMPA/27 cc GEAR PUMP

Adet	Parça No	Parça Adı	Kod
1	1	Gövde	33002731-01
4	2	Merkez burcu	33002731-02
4	3	28x32x30 Burç	33002731-03
2	4	M O-ring	33002731-04
2	5	Alüminyum Plate	33002731-05
1	6	Kısa Dişli	33002731-06
1	7	Uzun Dişli	33002731-07
1	8	1.78x98.05 O-ring	33002731-08
1	9	Dpa Kapak	33002731-09
1	19	T1 Kapak	33002711-19
1	20	T2 Kapak	33002723-20
8	10	M10x40 Civata	33002731-10
1	11	471-35 Segman	33002731-11
1	12	32007 Rulman	33002731-12
1	13	56x62x2 Pul	33002731-13
1	14	32207 Rulman	33002731-14
1	15	Dpa Mili	33002731-15
2	16	50x72x7 Kece	33002731-16
1	17	Tel Segman	33002731-17
1	18	3/4" Tapa	33002731-18
36	TOPLAM PARÇA SAYISI		



GENEL BİLGİLER/GENERAL DATA

Pompa Tipi Pump Type	Debi Displacement	Max. Sürekli Hiz Max. Continuous Speed	Min. Kesik Hiz Min. Intermitt. Speed	Max. Kesik Hiz Max. Intermitt. Speed	Max. Sürekli Basınç Max. Continuous Pressure	Max. Kesik Basınç Max. Intermitt. Pressure	Max. Ani Basınç Max. Peak Pressure	Ağırlık Weight
30-27	lt/dk(gpm)	n(min ⁻¹)	n(min ⁻¹)	n(min ⁻¹)	bar (psi)	bar (psi)	bar (psi)	kg(lb) / Pound
	26.50/05.80	2500	450	4000	305/4423	330/4786	450/6526	10,90/23,20

İdeal yağ sıcaklığı Ideal oil temp.	50° / 60°C	Maksimum sıcaklık Maximum temp.	0° / 80°C
--	------------	------------------------------------	-----------

P3 Maksimum Ani Basınç - Max. Peak Pressure
P2 Maksimum Kesik Basınç - Max. Intermittent Pressure
P1 Maksimum Sürekli Basınç - Max. Continuous Pressure